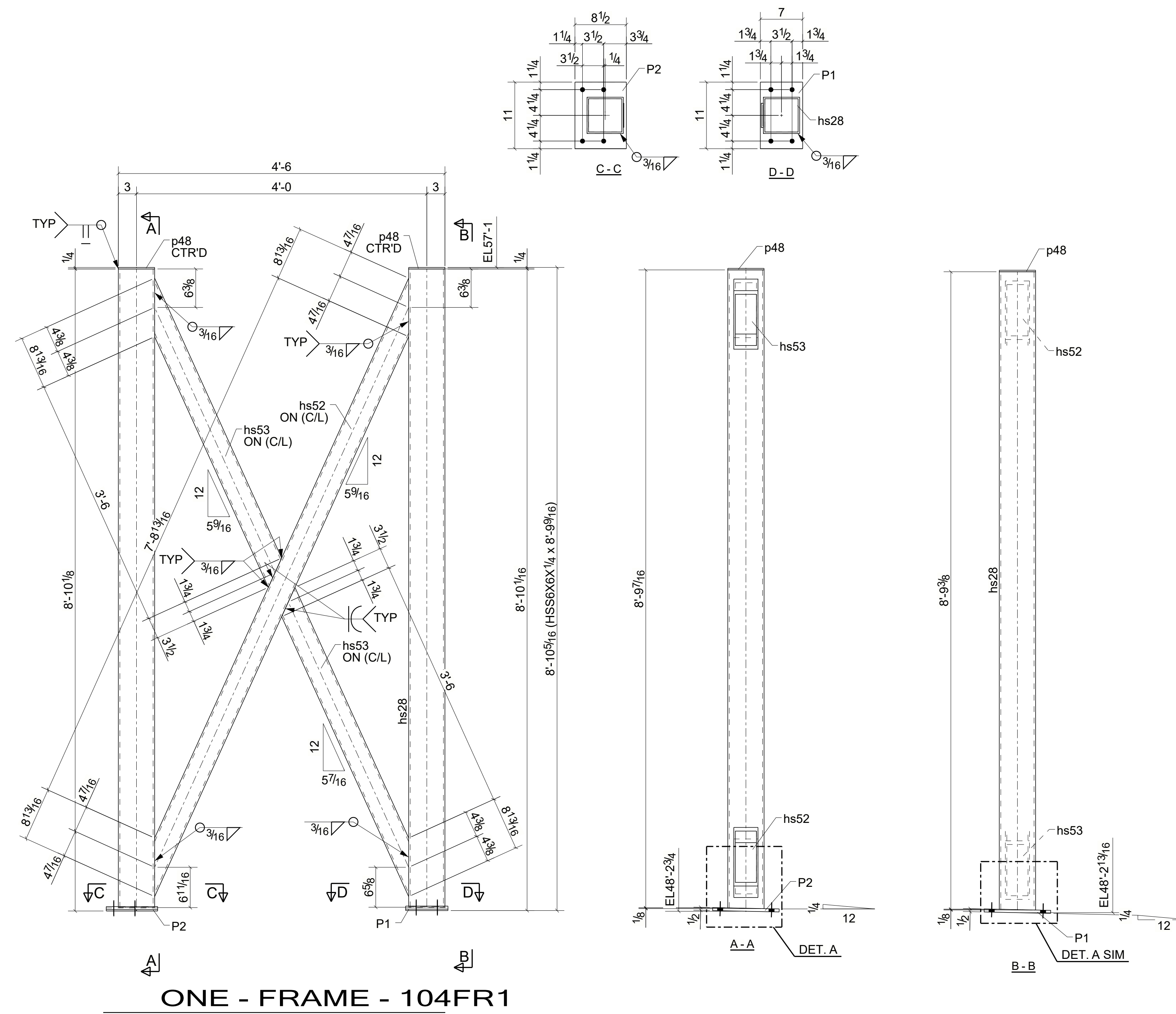
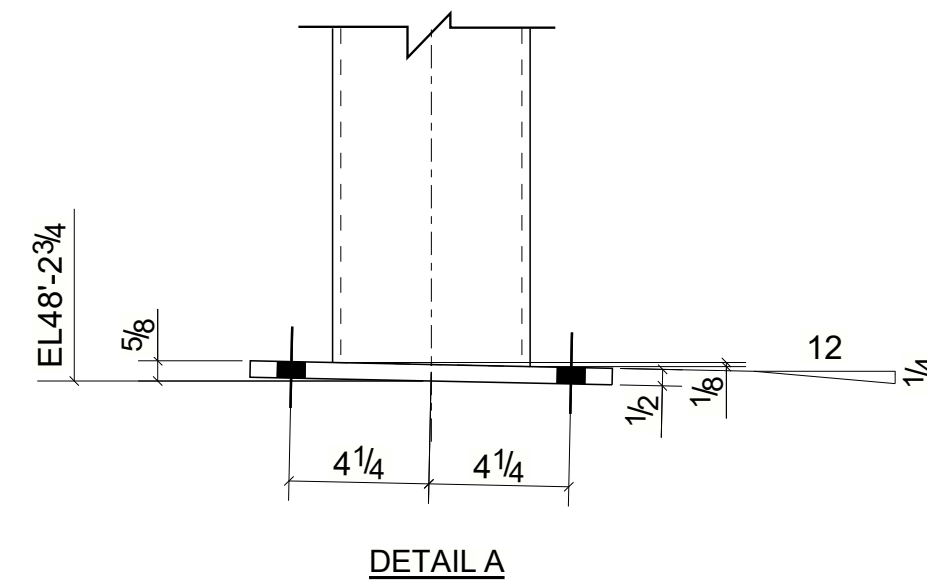


JOB NO.						SHEET
PAINT: 1-SIC PRIMER						104
SHIPPING QUAN.	QUAN.	PIECE MARK	DESCRIPTION	LENGTH	WEIGHT	REMARKS
1	1	104FR1	FRAME			
	1		HSS6X6X1/4	8'-9 9/16"	157	A500-GR.B
	1	P1	PL1/2"X7"	0'-11"	11	A36
	1	P2	PL1/2"X8 1/2"	0'-11"	13	A36
	1	hs28	HSS6X6X1/4	8'-9 1/2"	157	A500-GR.B
	1	hs52	HSS4X4X1/4	9'-2 7/16"	106	A500-GR.B
	2	hs53	HSS4X4X1/4	4'-6 5/16"	104	A500-GR.B
	2	p48	PL1/4"X6"	0'-6"	5	A36
TOTAL WEIGHT THIS DRAWING					552	

ERECTION BOLTS					
104FR1 BOLT QTY'S ARE FOR ONE ASSEMBLY ONLY					
MARK	QTY	BOLT DESCRIPTION	GRADE	SITE/WORKSHOP	
104FR1	8	BOLT 3/4"DIA A325 TC 2"	A325N_TC	Site	



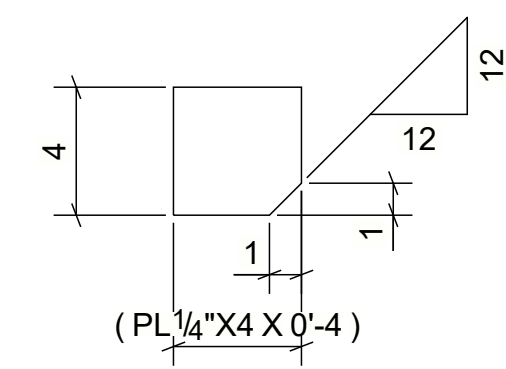
ONE - FRAME - 104FR1



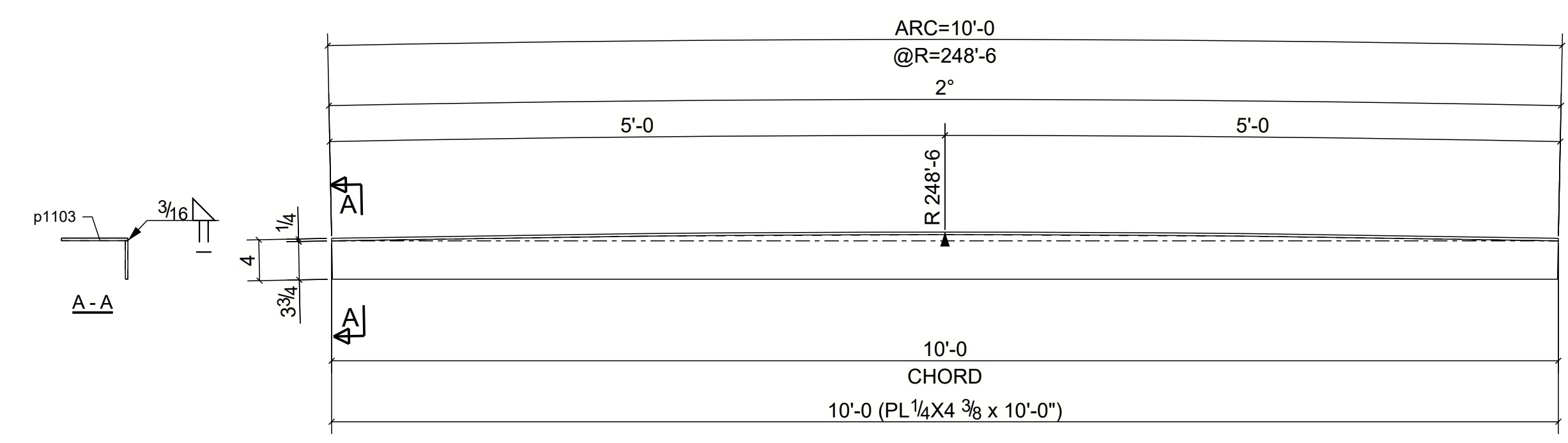
GENERAL NOTES:			
1)	All Holes	13/16Ø	Unless Noted.
2)	Finish	1-SIC PRIMER	
3)	Seal Weld With	1/4" Fillet.	
4)	Weld	E70XX	Unless Noted.
Ref. Dwg. _____			
PRINT RECORD			
DATE	REV.	FOR	
FOR:			
SCALE-NONE	DATE	REVISIONS	DATE
DRAWN BY	MSK	02/19/2021	1
CHECKED BY	PBH	02/19/2021	2
APPROVED BY			3
P.O. No.		JOB No.	SHEET No.
02/19/2021	0		104
01/22/2021	A	For Approval	

SHIPPING BILL				BILL OF MATERIAL			
QTY	MARK	MARK	QTY	DESCRIPTION	LENGTH	WEIGHT	REMARKS
14	1258P1			PLATES		1	
		1258P1	14	PL 1/4"x4"	0'-4"	15	A36
1	1258P2			ROLLED PLATES		90	
		1258P2	1	PL 1/4"x4 3/8"	10'-0"	35	A36 ROLLED CUT
		p1103	1	PL 1/4"x6 1/2"	10'-0"	55	A36 ROLLED
TOTAL WEIGHT THIS DRAWING						106	

Member	TOTAL QTY.	FIELD BOLTS	LENGTH



14 - PLATES - 1258P1



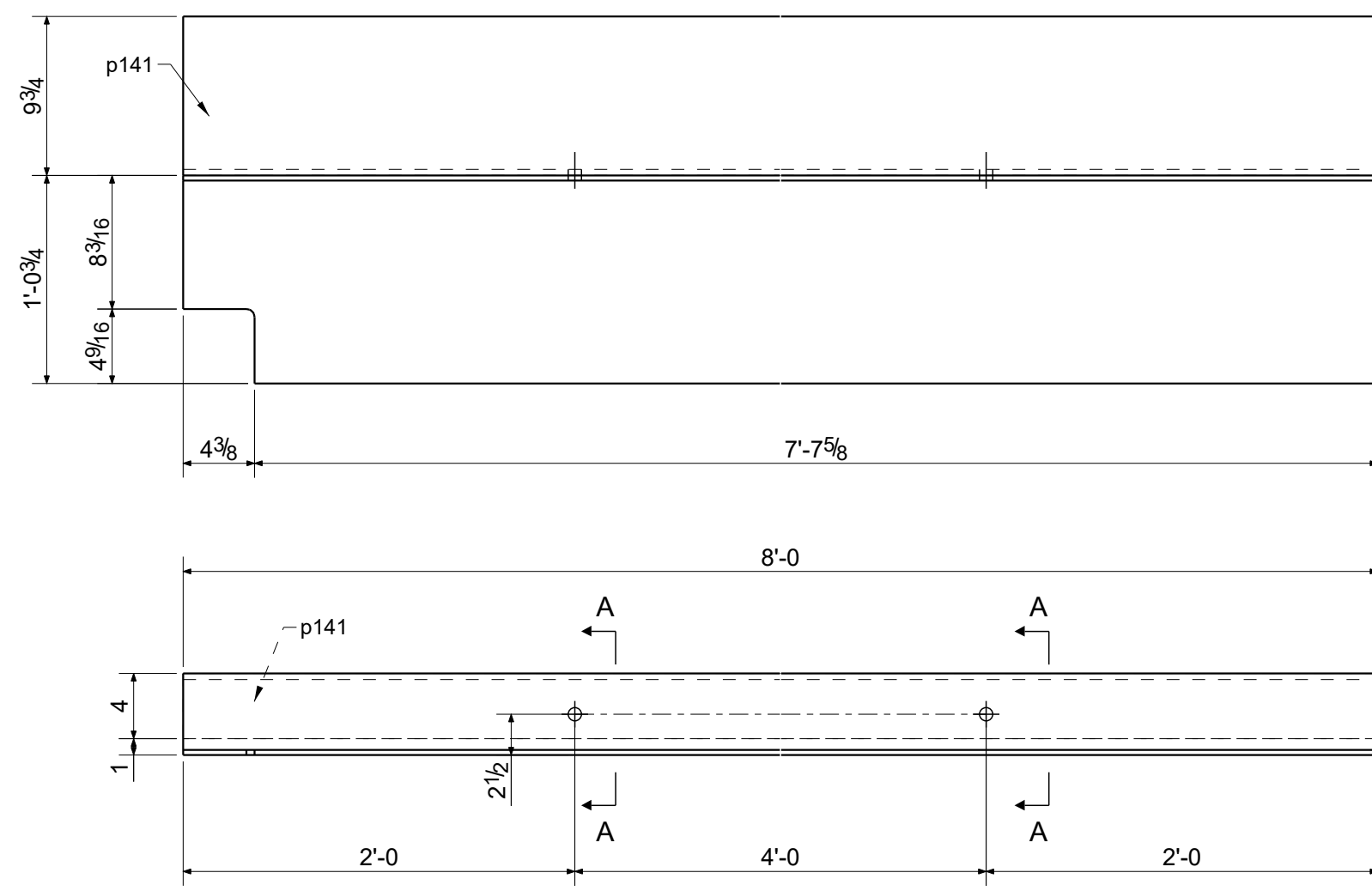
ONE - ROLLED PLATE - 1258P2

For Fabrication

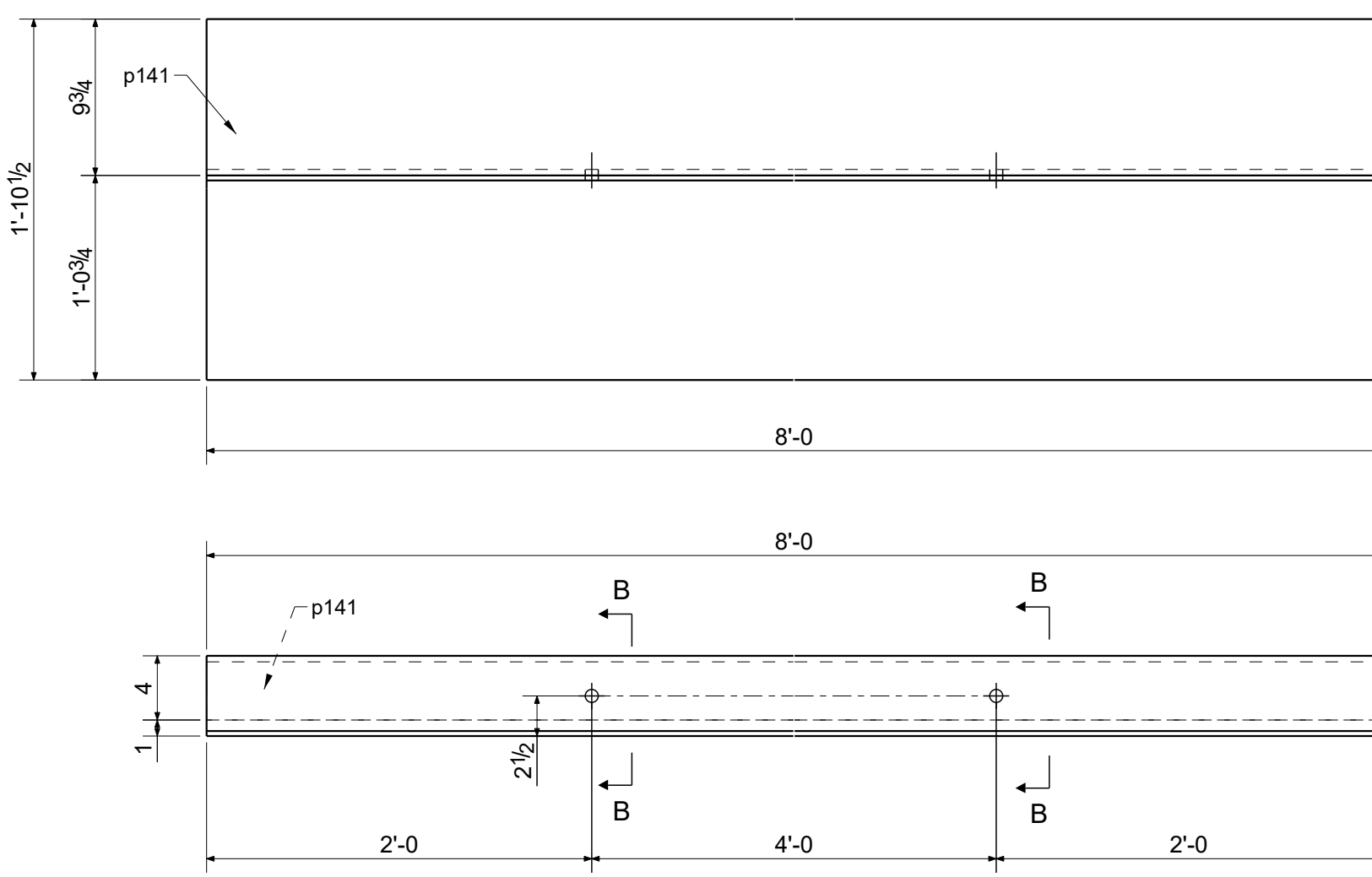
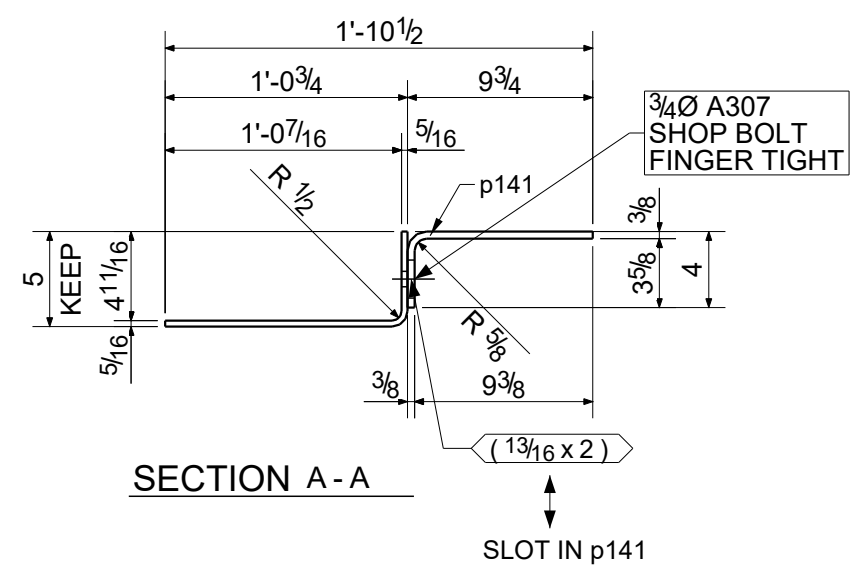
SHOP NOTES:
 1. ALL STEELS ARE A36 U.N.O.
 2. ☞ - DENOTES CONNECTING SIDE MARK.
 REF.DWG. E1003,E1005
 PAINT : CENTURY COATING 220-D-344 GRAY PRIMER HOLES : 13/16" UNL. NTD.
 SURFACE PREP : - MIL THICKNESS : ELECTRODES : E70XX UNL. NTD.

REVISIONS		
NO.	DATE	BY
0	01/12/2021	PBH
A	11/20/2020	JM

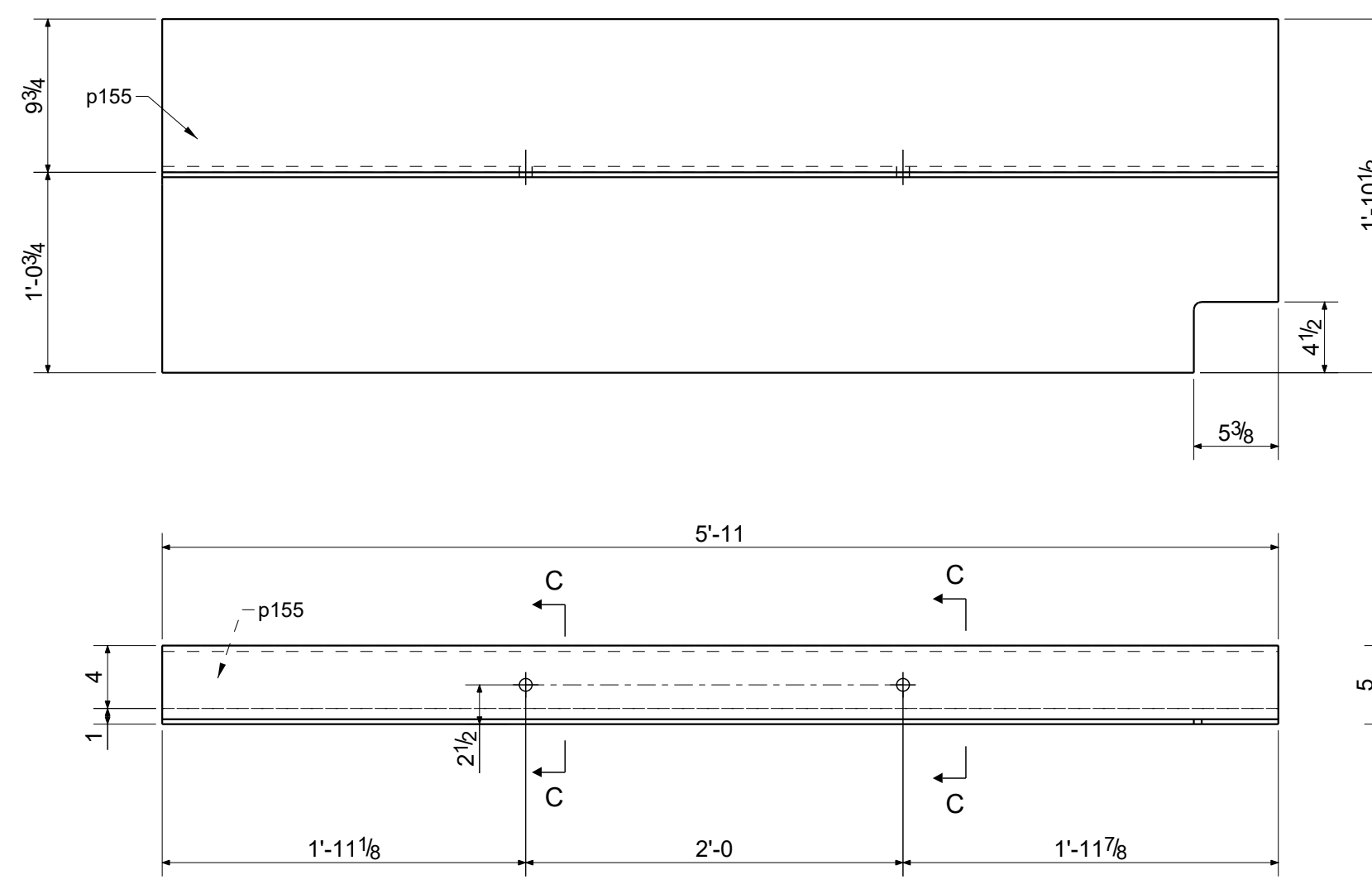
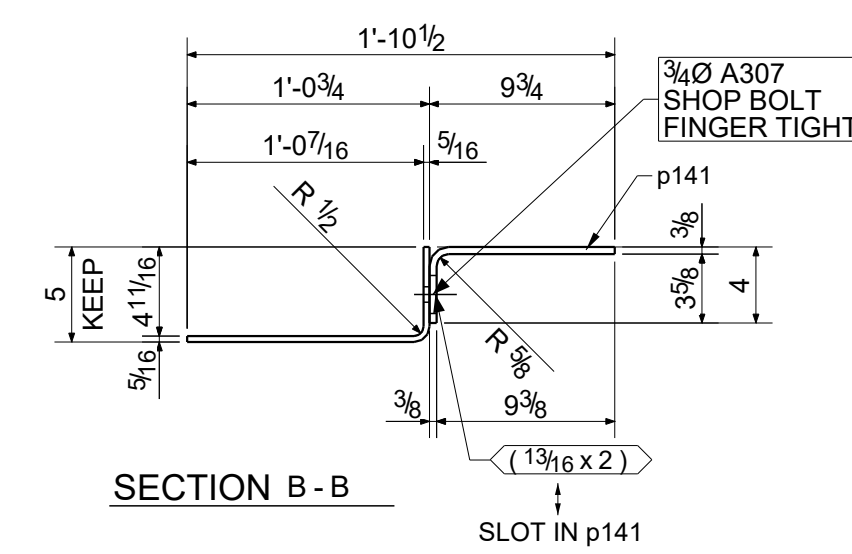
NOTICE TO CONTRACTORS AND ERECTOR
 BACK CHARGES FOR CORRECTIVE WORK OR REPLACED MATERIALS WILL NOT BE ACCEPTED UNLESS AUTHORIZED IN WRITING BY POSTEL INTERNATIONAL INC. BEFORE SUCH COSTS ARE INCURRED



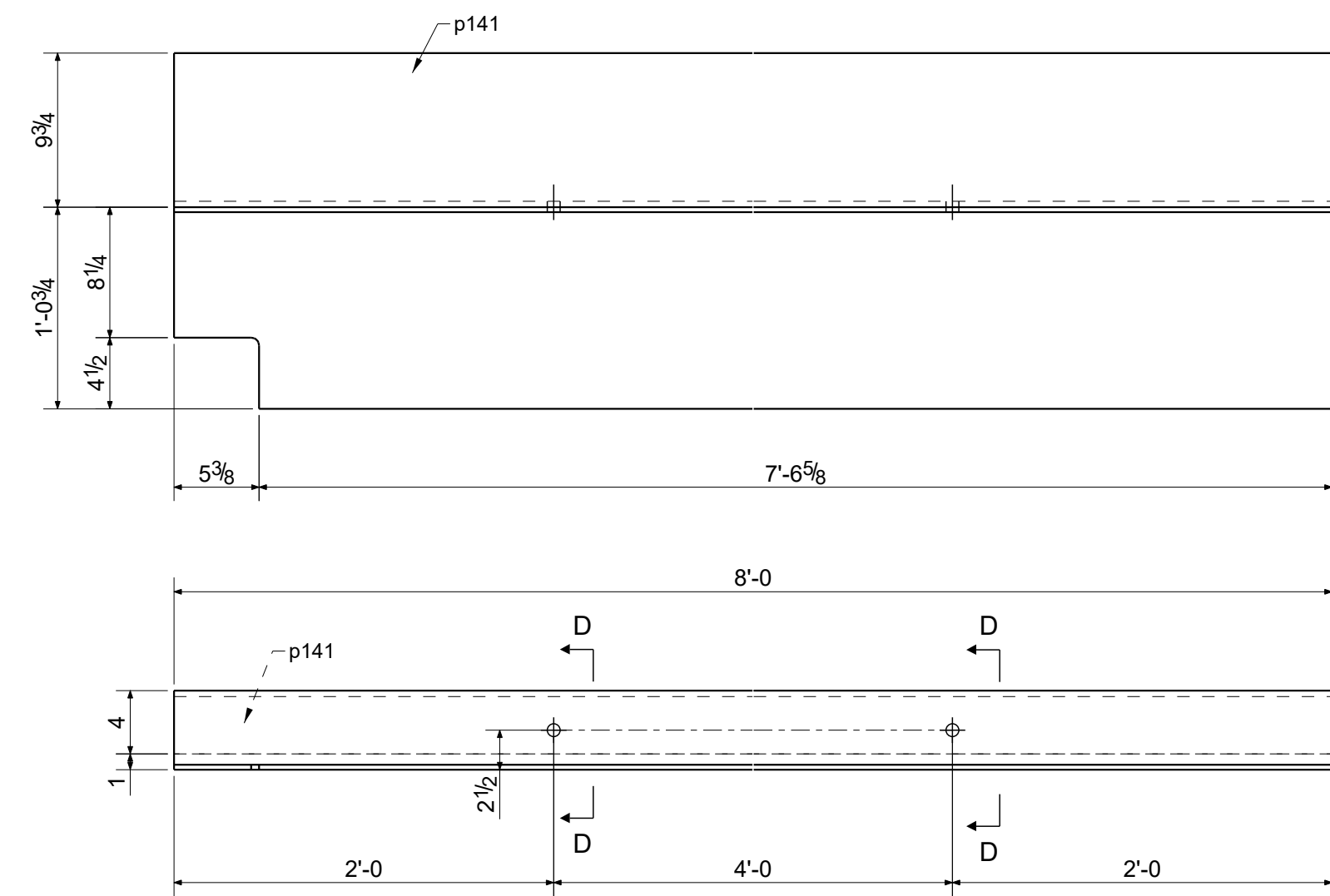
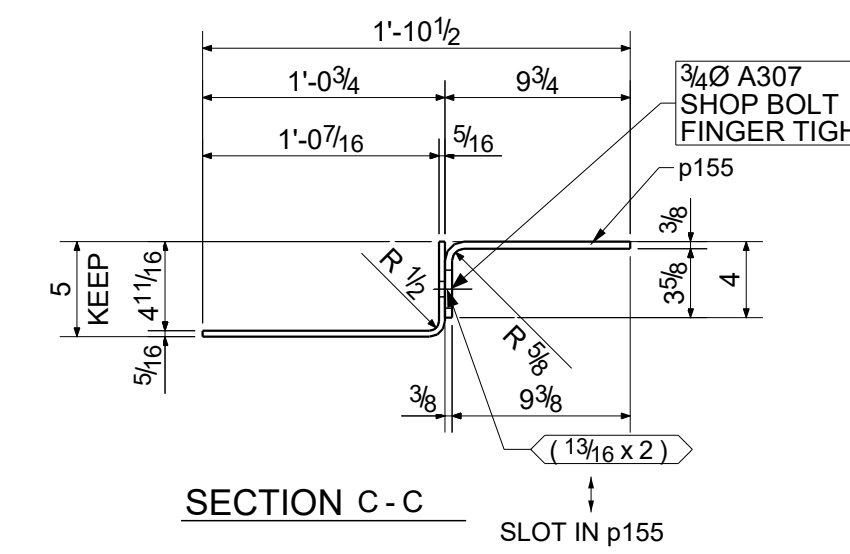
ONE - BENT PLATE - 219P1



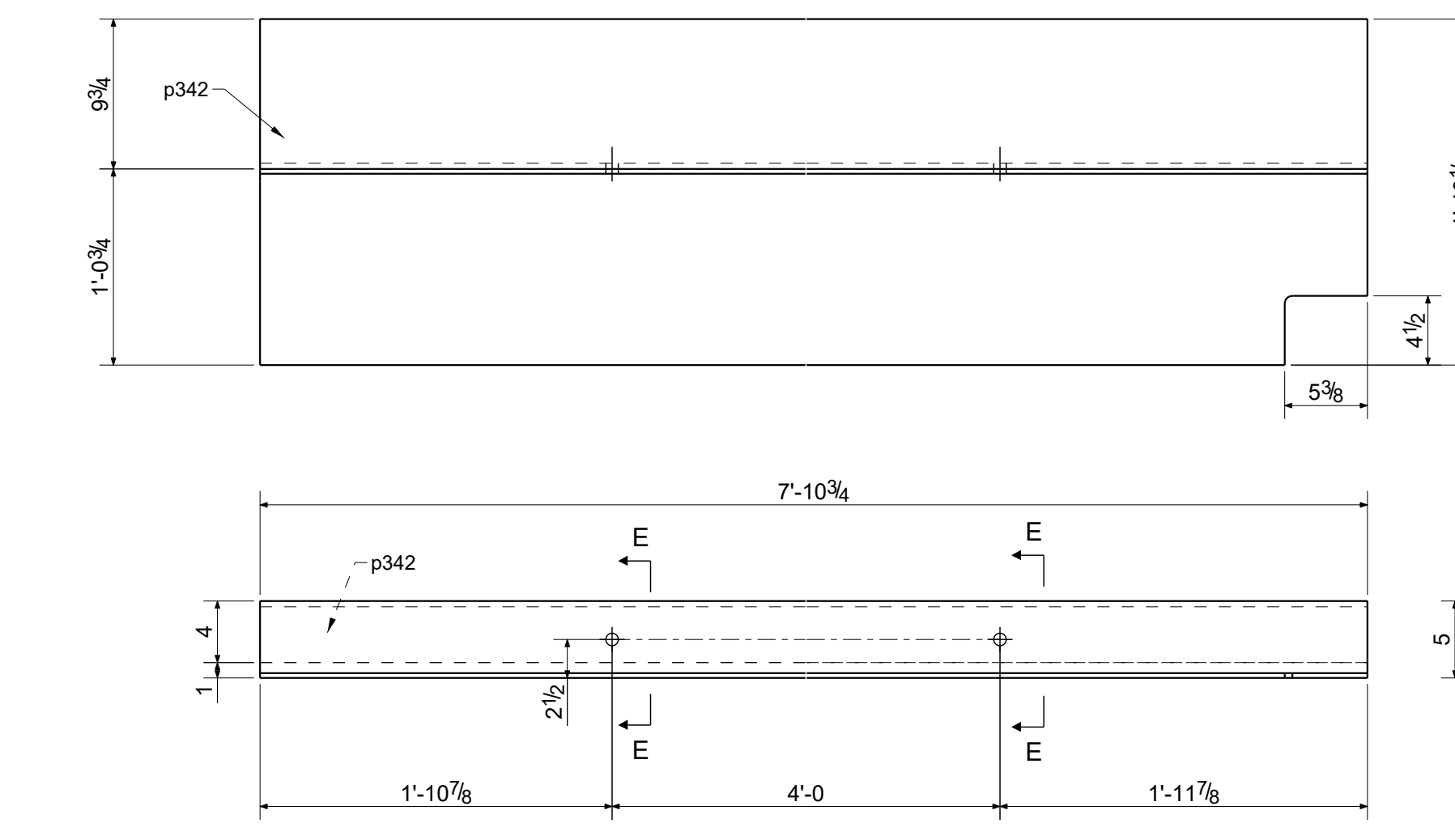
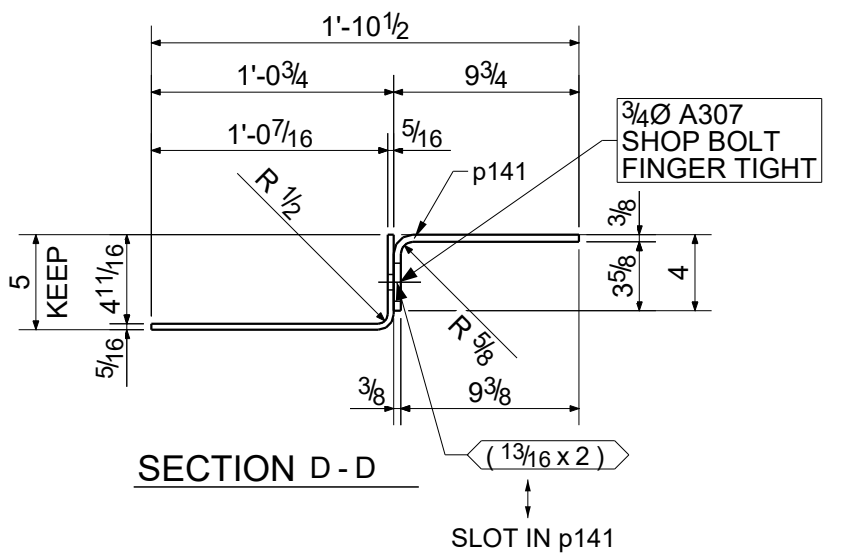
8 - BENT PLATES - 219P2



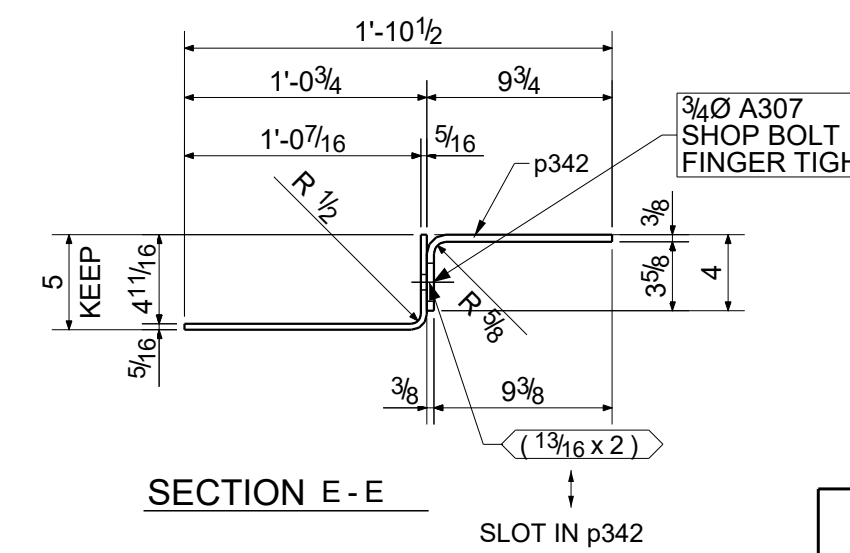
ONE - BENT PLATE - 219P3



2 - BENT PLATES - 219P4



2 - BENT PLATES - 219P5



BILL OF MATERIAL										
QUANTITY	SHIPPING MARK	No. PCS	MATERIAL	LENGTH FT.	IN	PIECE MARK	GRADE	FINISH	CAMBER	REMARKS
1	219P1	1	PL5/16X17 1/8	8'	0		A36	P		BENT
		1	PL3/8X13	8'	0	p141	A36	P		BENT
		2	3/4 DIA A307 BOLT		1 3/4					1HD WASH
8	219P2	8	PL5/16X17 1/8	8'	0		A36	P		BENT
		8	PL3/8X13	8'	0	p141	A36	P		BENT
		16	3/4 DIA A307 BOLT		1 3/4					1HD WASH
1	219P3	1	PL5/16X17 1/8	5'	11		A36	P		BENT
		1	PL3/8X13	5'	11	p155	A36	P		BENT
		2	3/4 DIA A307 BOLT		1 3/4					1HD WASH
2	219P4	2	PL5/16X17 1/8	8'	0		A36	P		BENT
		2	PL3/8X13	8'	0	p141	A36	P		BENT
		4	3/4 DIA A307 BOLT		1 3/4					1HD WASH
2	219P5	2	PL5/16X17 1/8	7'	10 3/4		A36	P		BENT
		2	PL3/8X13	7'	10 3/4	p342	A36	P		BENT
		4	3/4 DIA A307 BOLT		1 3/4					1HD WASH

ALL MATERIAL A36 UNLESS NOTED Total Weight:

RESERVED FOR OFFICE STAMPING

SHOP NOTE:
MISLOCATED HOLES MAY BE LEFT OPEN OR PLUG WELDED (MUST BE DONE IN ACCORDANCE WITH AWS D1.1 SECTION 5.26.5)

Seq-2

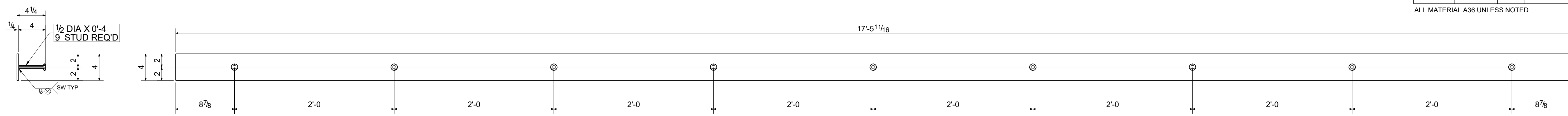
PROJECT:	SCALE: NTS	JOB NO. E
LOCATION:	DATE: 11/26/2019	DRAWING NO. 219
ARCHITECT:	CONTRACTOR:	
DRAWN BY: MKS	SCALE: NTS	JOB NO. E
CHKD BY: PBH	DATE: 11/26/2019	DRAWING NO. 219
REVISIONS	APPD	

BILL OF MATERIAL

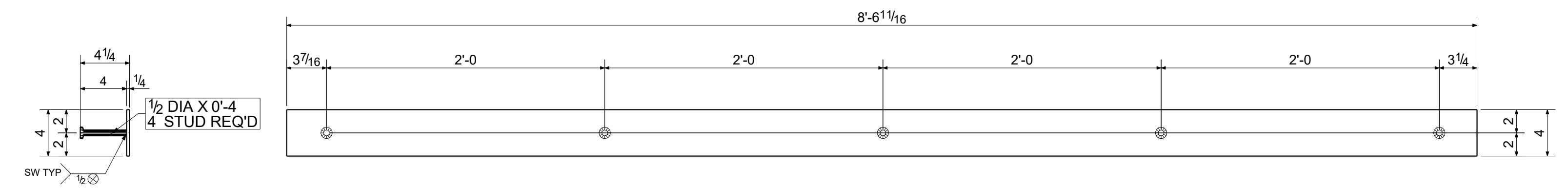
QUANTITY	SHIPPING MARK	No. PCS	MATERIAL	LENGTH		PIECE MARK	GRADE	FINISH	CAMBER	REMARKS
				FT.	IN					
1	2EM1	1	PL1/4X4	17	5 11/16		A36	N		
		9	STUD_1/2-DIA	0	4	r31	A108			
1	2EM2	1	PL1/4X4	8	6 11/16		A36	N		
		5	STUD_1/2-DIA	0	4	r31	A108			
1	2EM3	1	PL1/4X4	14	7 3/16		A36	N		
		8	STUD_1/2-DIA	0	4	r31	A108			
3	2EM4	3	PL3/4X10	1	6		A36	N		
		18	STUD_3/4-DIA	0	8	r28	A108			
1	2EM5	1	PL1/4X4	4	7 3/16		A36	N		
		3	STUD_1/2-DIA	0	4	r31	A108			

ALL MATERIAL A36 UNLESS NOTED

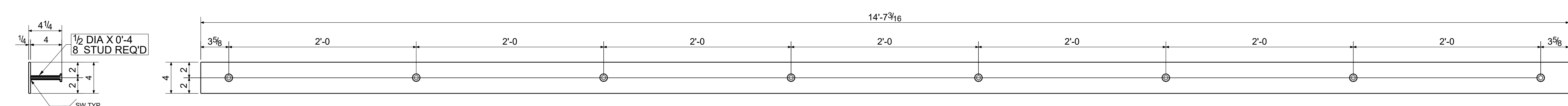
Total Weight:



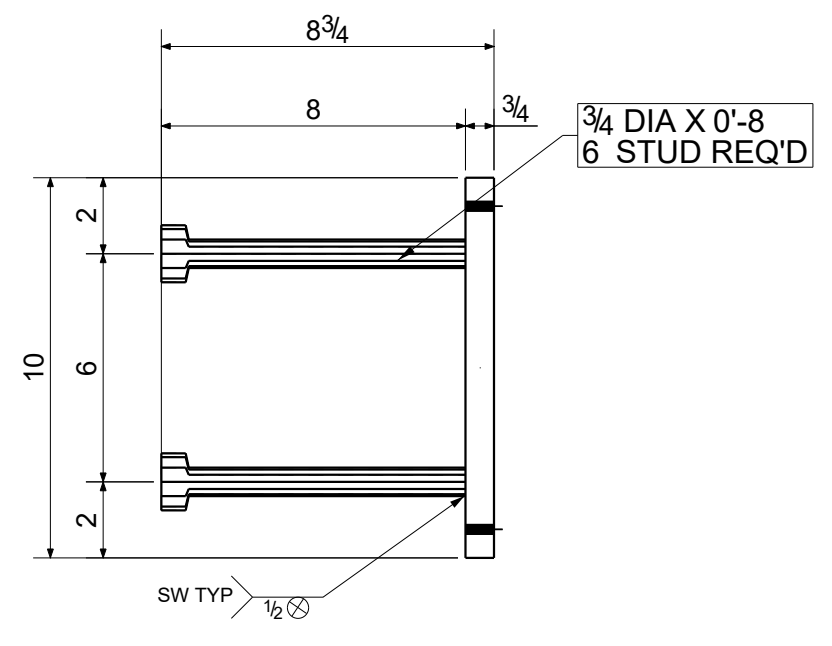
ONE - EMBED PLATE - 2EM1



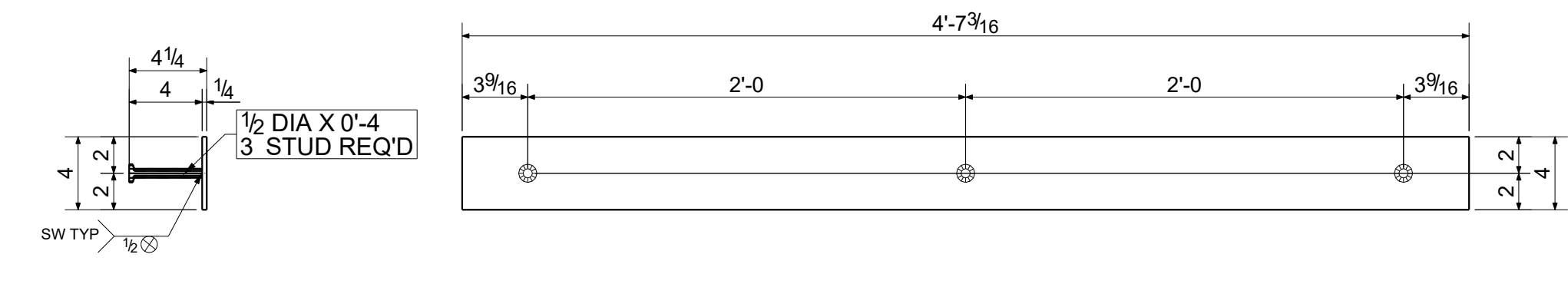
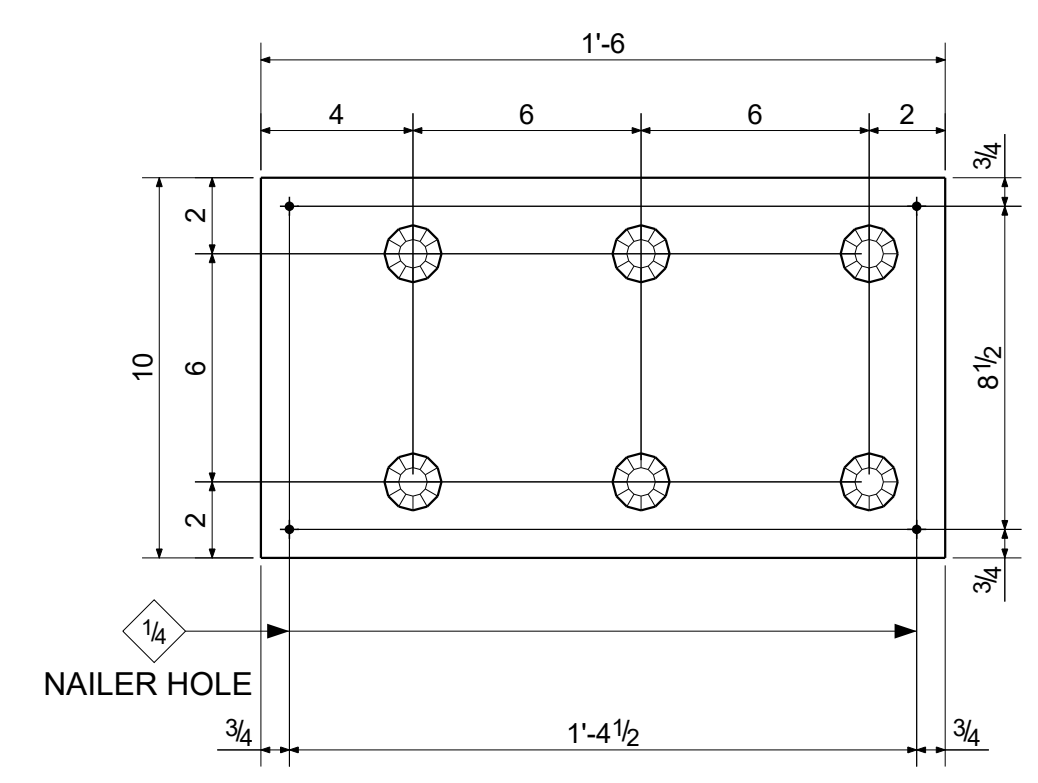
ONE - EMBED PLATE - 2EM2



ONE - EMBED PLATE - 2EM3



3 - EMBED PLATES - 2EM4



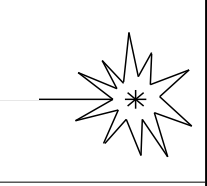
ONE - EMBED PLATE - 2EM5

SHOP NOTE:
MISLOCATED HOLES MAY BE LEFT OPEN OR PLUG WELDED (MUST BE DONE IN ACCORDANCE WITH AWS D1.1 SECTION 5.26.5)

EMBED

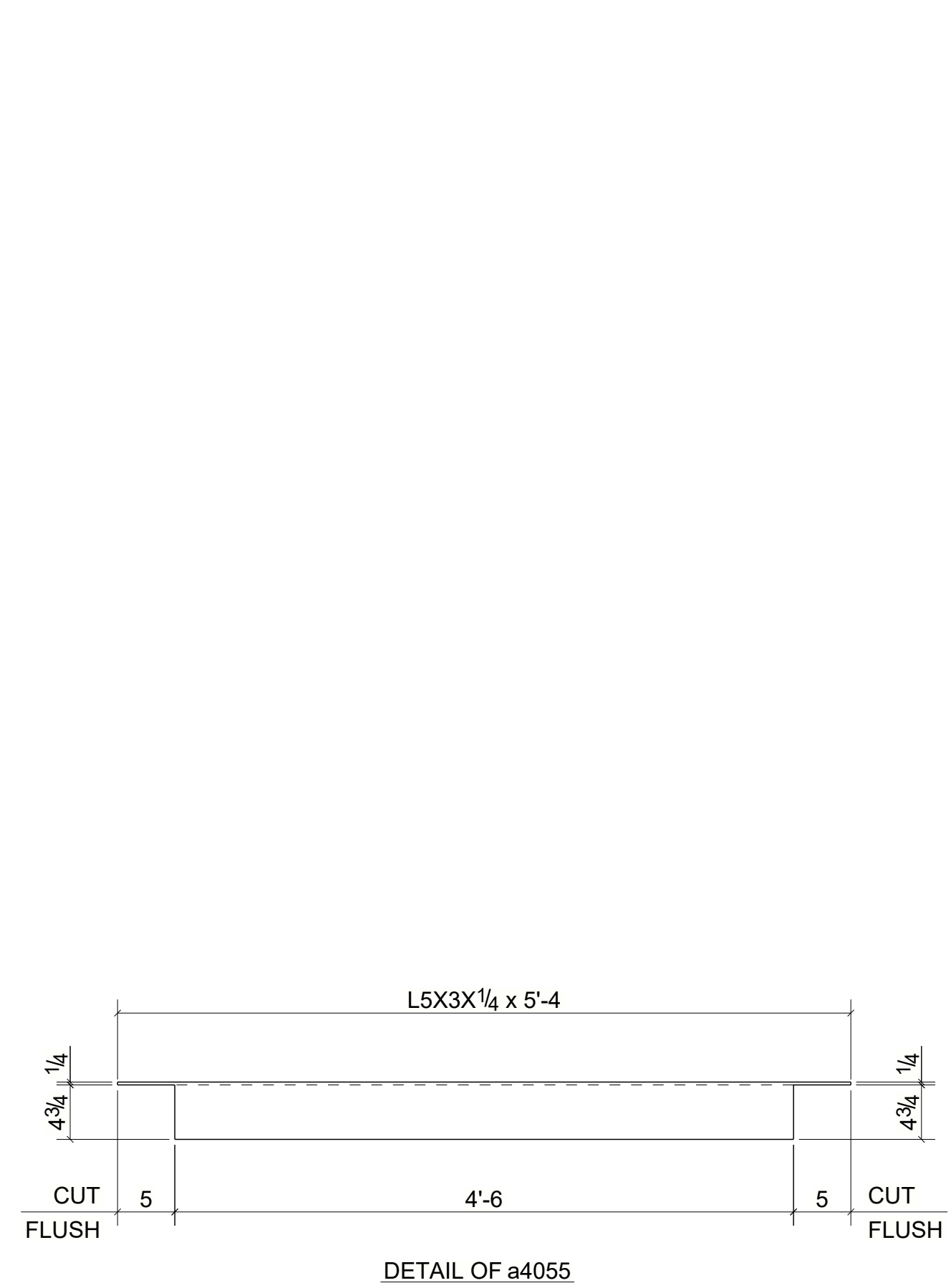
ALL 13/16" HOLES U.N.O.				PROJECT:	
WELDS: E70XX				LOCATION:	
CLEAN:				ARCHITECT:	
PAINT: NO PAINT				CONTRACTOR:	
0	01/15/2020	SP		DRAWN BY	SSP
A	11/11/2019	SP		DATE	11/11/2019
REV	DATE	BY		CHKD BY	PBH
				APPD	
REVISIONS			TRACED		SCALE NTS
					JOB NO.
					DRAWING NO.
					2

RESERVED FOR OFFICE STAMPING

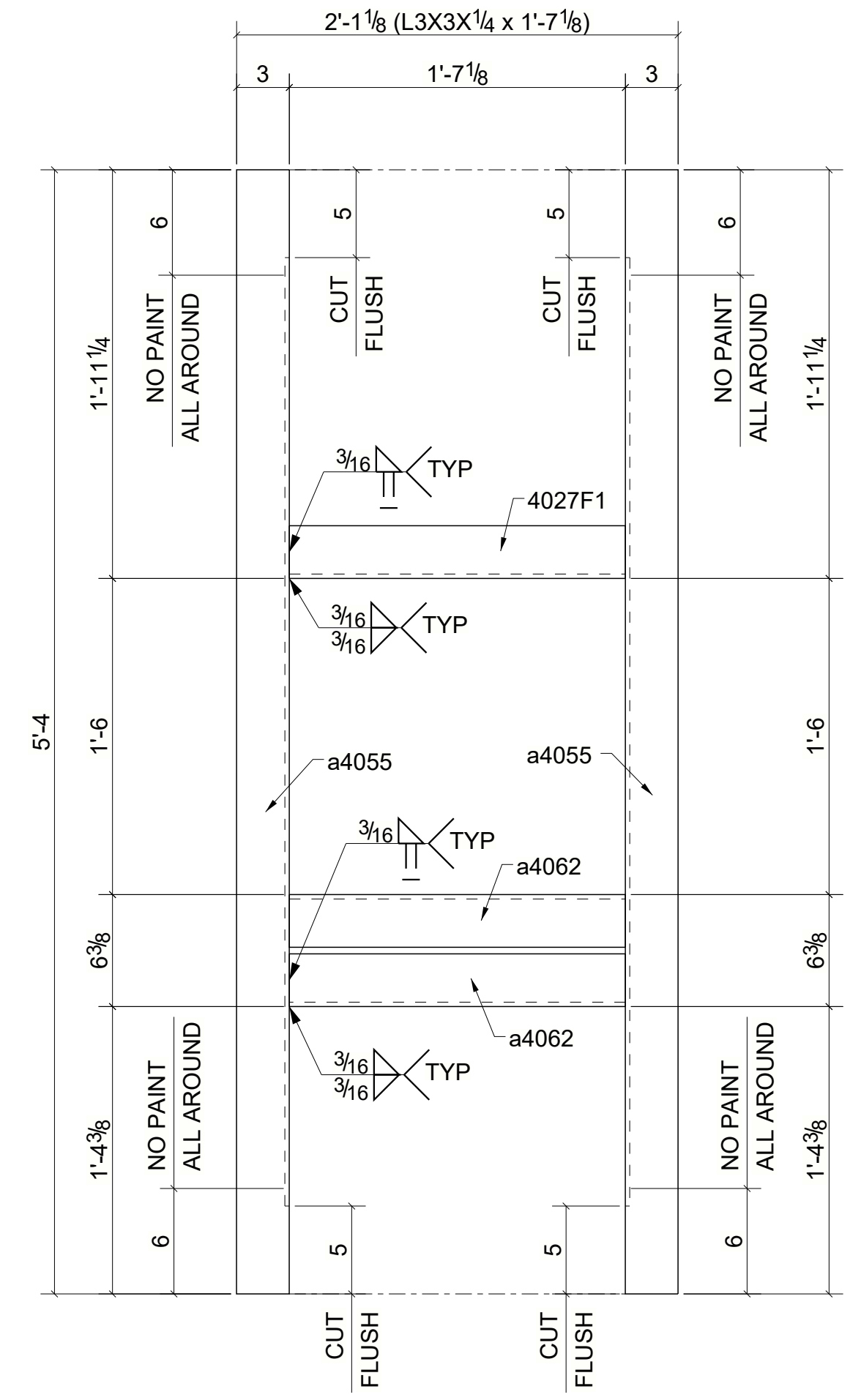


SHIPPING BILL				BILL OF MATERIAL			
QTY	MARK	MARK	QTY	DESCRIPTION	LENGTH	WEIGHT	REMARKS
1	4027F1			FRAMES		94	
		4027F1	1	L3X3X1/4	1'-7 1/8"	8	A36
		a4055	2	L5X3X1/4	5'-4"	70	A36
		a4062	2	L3X3X1/4	1'-7 1/8"	16	A36
1	4027F2			FRAMES		113	
		4027F2	1	L3X3X1/4	3'-6"	17	A36
		a4041	2	L3X3X1/4	1'-6"	15	A36
		a4064	1	L3X3X1/4	3'-6"	17	A36
		a4067	1	L5X3X1/4	4'-10"	32	A36
		a4068	1	L5X3X1/4	4'-10"	32	A36
TOTAL WEIGHT THIS DRAWING						207	

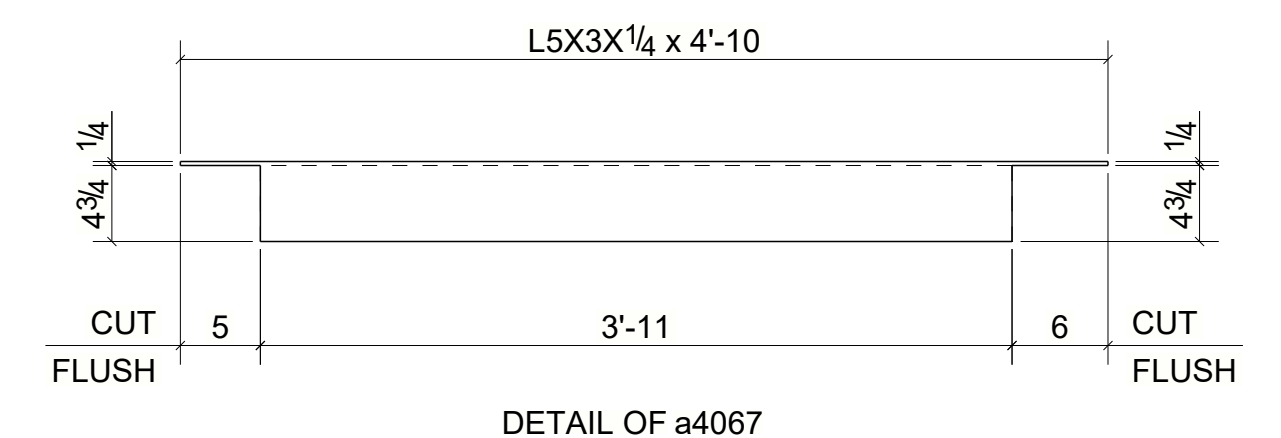
Member	TOTAL QTY.	FIELD BOLTS	LENGTH



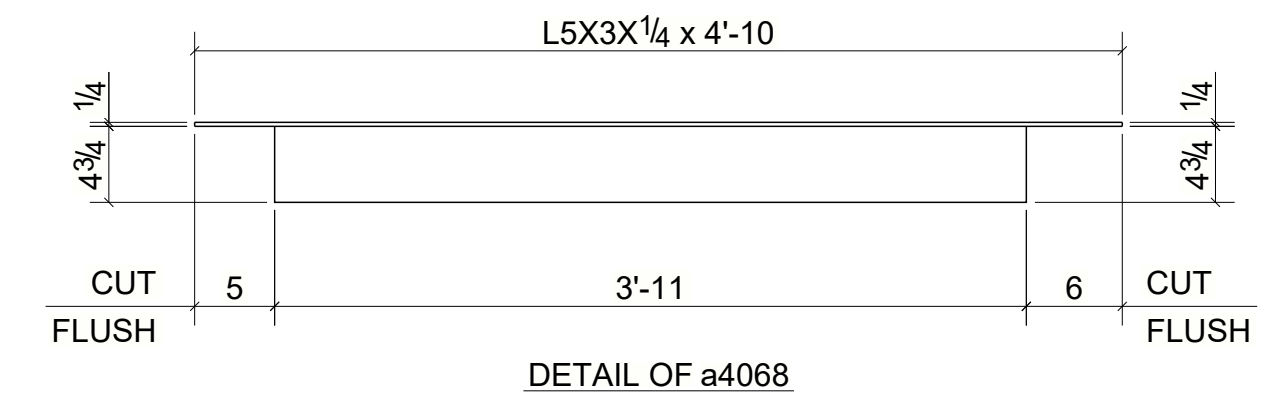
DETAIL OF a4055



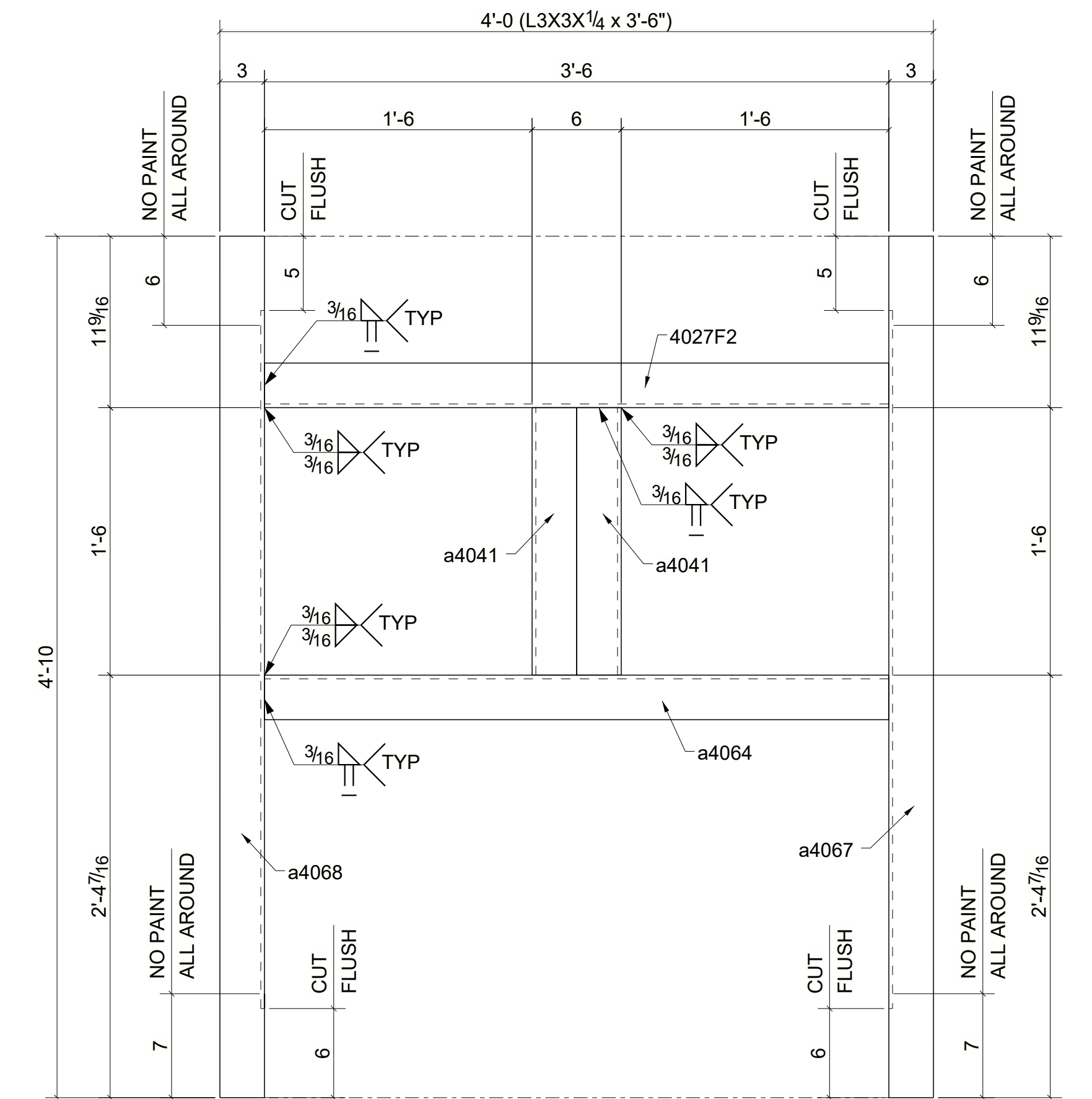
ONE - FRAME - 4027F1



DETAIL OF a4067



DETAIL OF a4068



ONE - FRAME - 4027F2

For Fabrication

SHOP NOTES:
 1. ALL STEELS ARE A36 U.N.O.
 2. Ⓢ - DENOTES CONNECTING SIDE MARK. REF.DWG. E4005,E4006
 PAINT : CENTURY COATING 220-D-344 GRAY PRIMER HOLES : 13/16" UNL. NTD.
 SURFACE PREP : - MIL THICKNESS ELECTRODES : E70XX UNL. NTD.

REVISIONS		
NO.	DATE	BY
0	03/03/2021	PBH

NOTICE TO CONTRACTORS AND ERECTOR
 BACK CHARGES FOR CORRECTIVE WORK OR REPLACED MATERIALS
 WILL NOT BE ACCEPTED UNLESS AUTHORIZED IN WRITING BY
 POSTEL INTERNATIONAL INC. BEFORE SUCH COSTS ARE INCURRED

DRAWN BY: VRK CHKD BY: PBH JOB NO. SHEET NO. 4027
 DATE: 02/03/2021 DATE: 02/03/2021