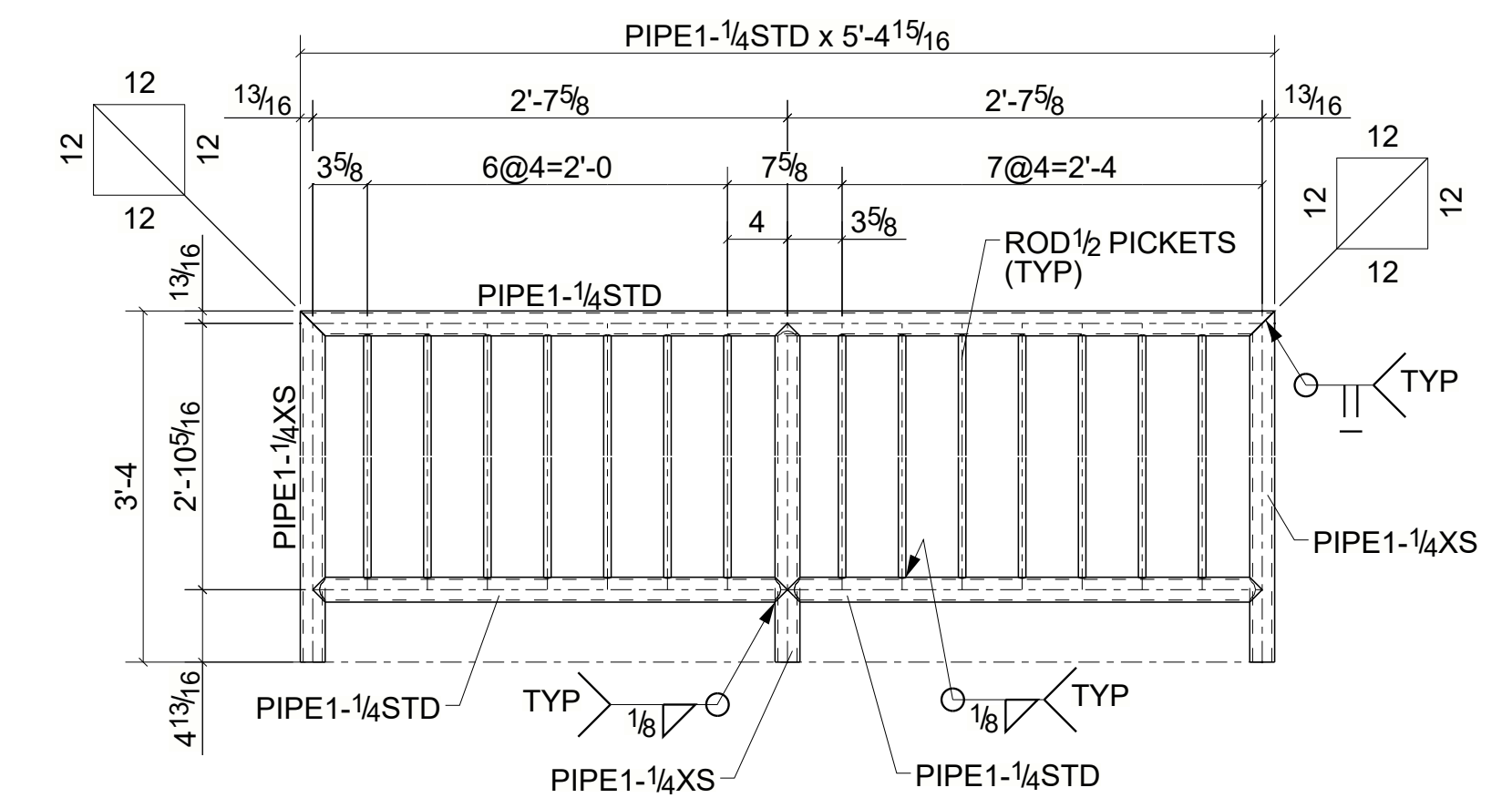
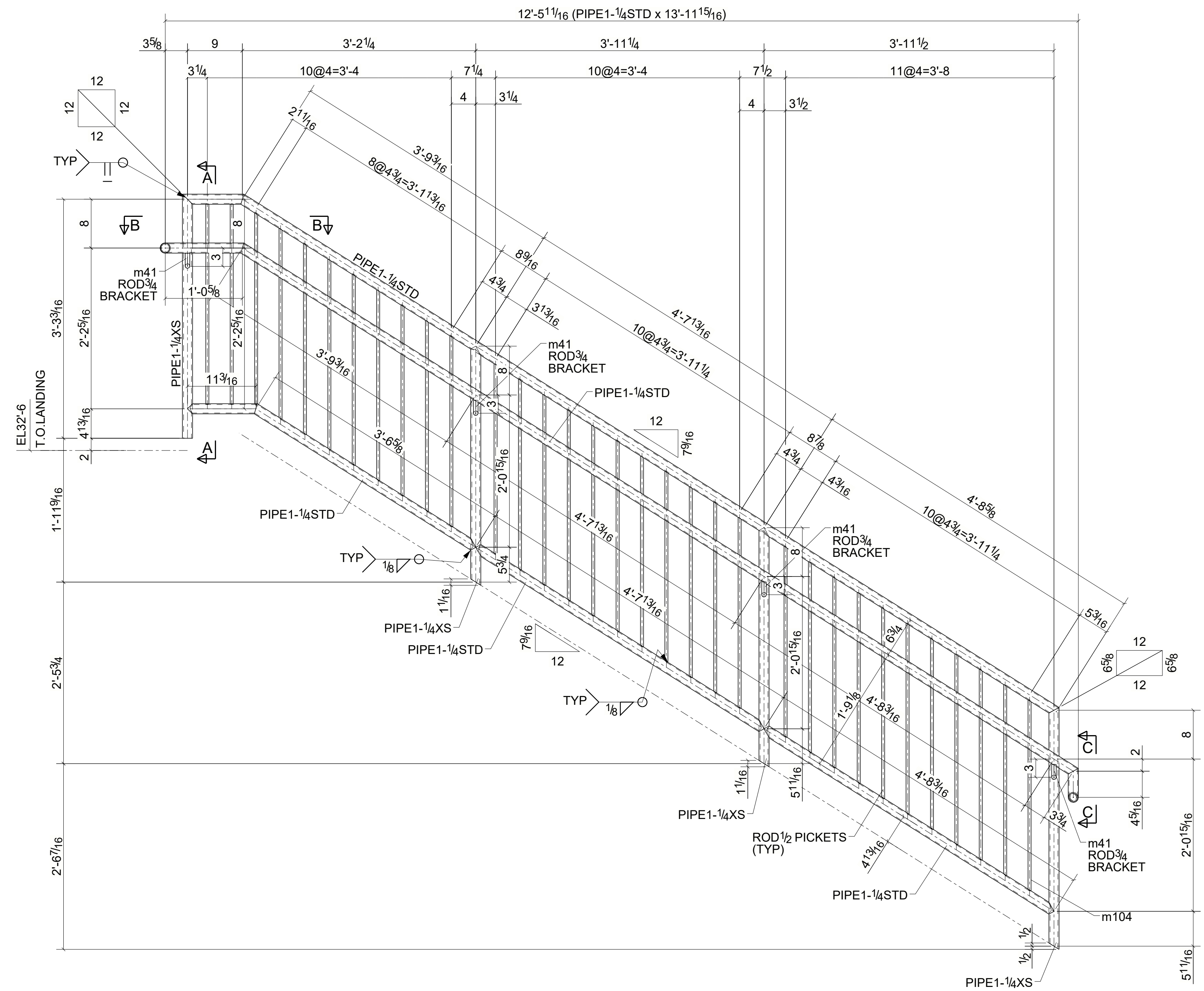


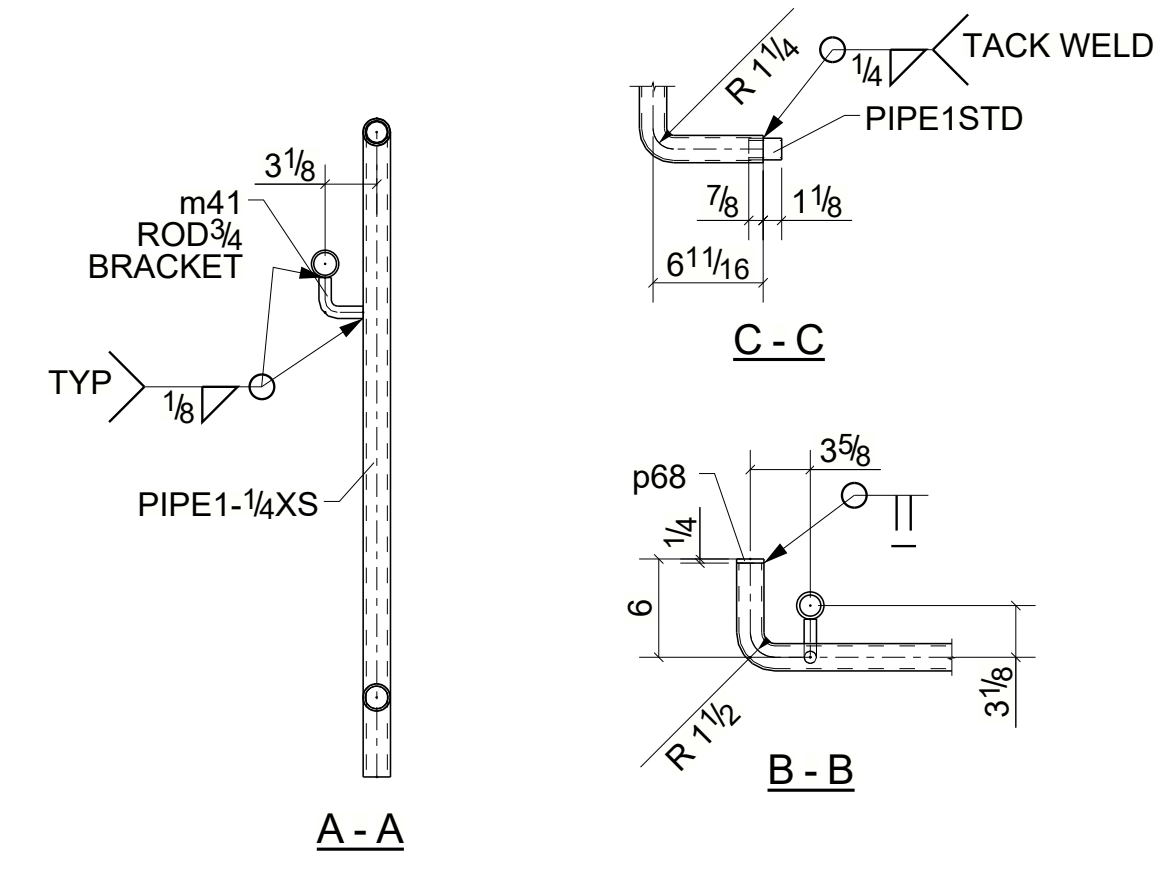
JOB NO.						SHEET
PAINT:						124
SHIPPING QUAN.	QUAN.	PIECE MARK	DESCRIPTION	LENGTH	WEIGHT	REMARKS
124H1	1		HANDRAIL			
			PIPE1-1/4STD	10'-8 3/16"		Total Length
			PIPE1-1/4XS	9'-11 3/16"		Total Length
			ROD1/2"	38'-3 7/16"		Total Length
124H2	1		HANDRAIL			
			PIPE1-1/4STD	43'-8 11/16"		Total Length
			PIPE1-1/4XS	13'-2"		Total Length
			PIPE1STD	0'-2"		Total Length
			ROD1/2"	86'-4 11/16"		Total Length
		m41	ROD3/4" BRACKET	1'-4 7/16"		Total Length BENT
1		p68	PL1/4"X1 11/16"	0'-1 11/16"		
124H1 BOLT QTY'S ARE FOR ONE ASSEMBLY ONLY						
MARK	QTY	BOLT DESCRIPTION		GRADE	SITE/WORKSHOP	
124H2 BOLT QTY'S ARE FOR ONE ASSEMBLY ONLY						
MARK	QTY	BOLT DESCRIPTION		GRADE	SITE/WORKSHOP	



ONE - HANDRAIL - 124H1
(STAIR A)



ONE - HANDRAIL - 124H2
(STAIR A)



For Fabrication

GENERAL NOTES:

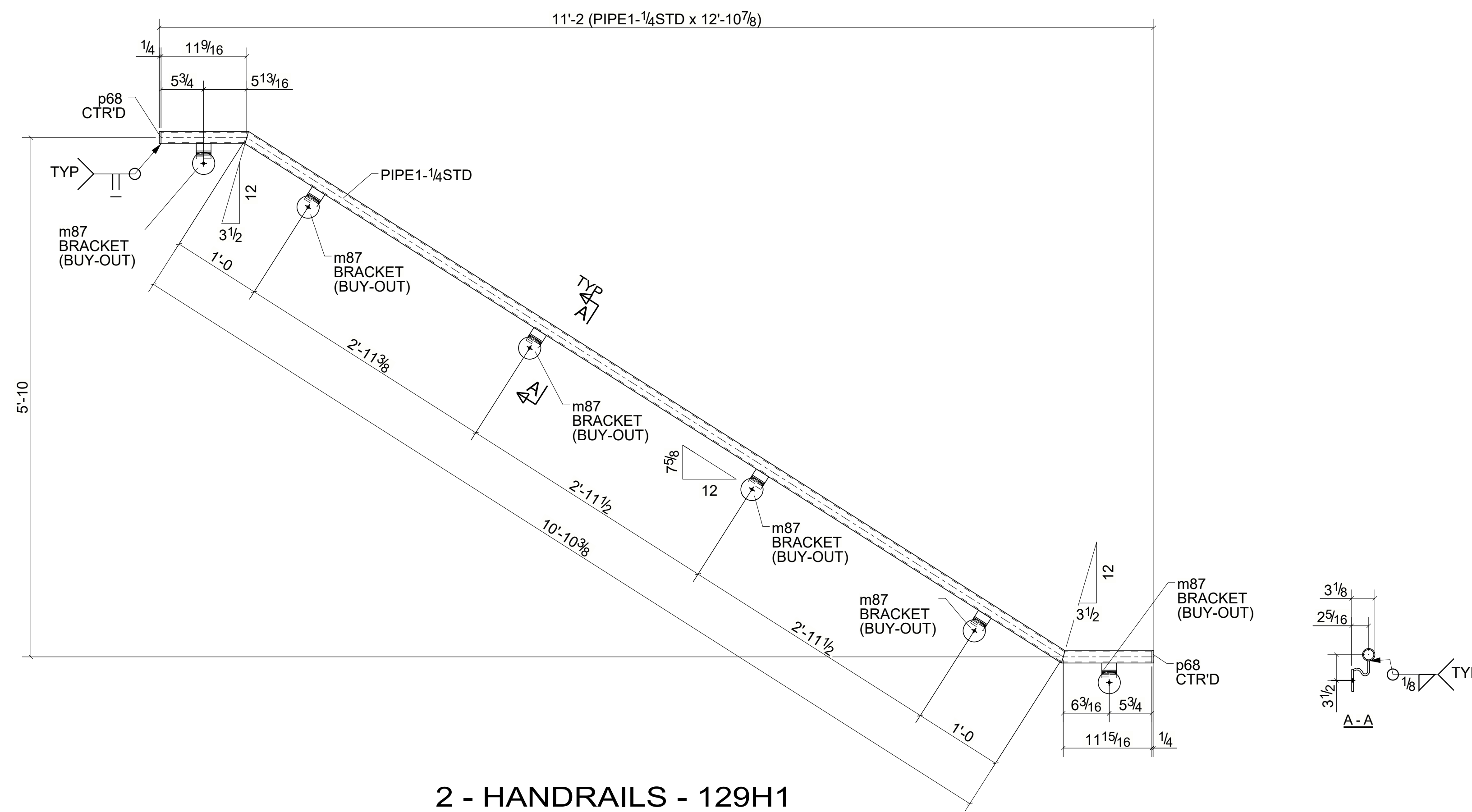
- All Holes $\frac{13}{16}$ Unless Noted.
- Finish $\frac{1}{8}$ SIC PRIMER
- Seal Weld With $\frac{1}{4}$ " Fillet.
- Weld E70XX Unless Noted.

Ref. Dwg. _____

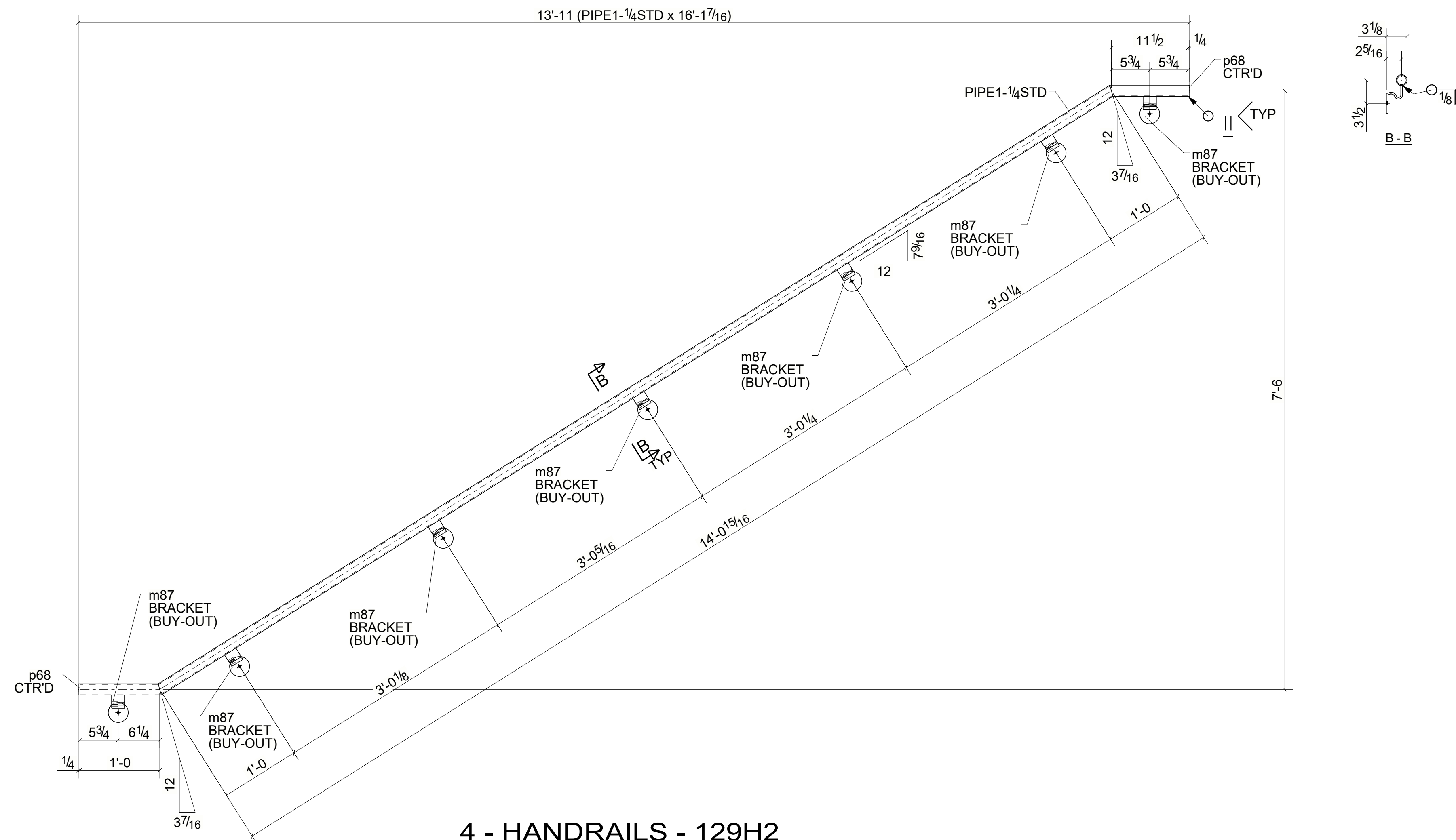
PRINT RECORD		
DATE	REV.	FOR

SCALE	DATE	REVISIONS	DATE
DRAWN BY	02/25/2021	1	
CHECKED BY	02/25/2021	2	
APPROVED BY		3	

P.O. No. _____ JOB No. _____ SHEET No. **124**



2 - HANDRAILS - 129H1
(STAIR A & B)



4 - HANDRAILS - 129H2
(2@ STAIR A & 2@ STAIR B)

JOB NO.						SHEET
PAINT:						129
SHIPPING QUAN.	QUAN.	PIECE MARK	DESCRIPTION	LENGTH	WEIGHT	REMARKS
129H1	2		HANDRAIL			
			PIPE 1-1/4 STD	25'-9 11/16"		Total Length
	4	p68	PL 1/4" X 1 11/16"	0'-1 11/16"		
	12	m87	WALL BRACKET	0'-2 7/16"		BUYOUT
129H2	4		HANDRAIL			
			PIPE 1-1/4 STD	64'-5 11/16"		Total Length
	8	p68	PL 1/4" X 1 11/16"	0'-1 11/16"		
	28	m87	WALL BRACKET	0'-2 7/16"		BUYOUT
BOLT QTY'S ARE FOR ONE ASSEMBLY ONLY						
MARK	QTY	BOLT DESCRIPTION	GRADE	SITE/WORKSHOP		
129H1	6	BOLT 3/8" DIA LAG SCREW 3"	LAG SCREW	Site		
BOLT QTY'S ARE FOR ONE ASSEMBLY ONLY						
MARK	QTY	BOLT DESCRIPTION	GRADE	SITE/WORKSHOP		
129H2	7	BOLT 3/8" DIA LAG SCREW 3"	LAG SCREW	Site		

For Fabrication

- GENERAL NOTES:
- All Holes $\frac{13}{16}$ Unless Noted.
 - Finish $\frac{1}{2}$ SIC PRIMER
 - Seal Weld With $\frac{1}{4}$ " Fillet.
 - Weld E70XX Unless Noted.

Ref. Dwg. _____

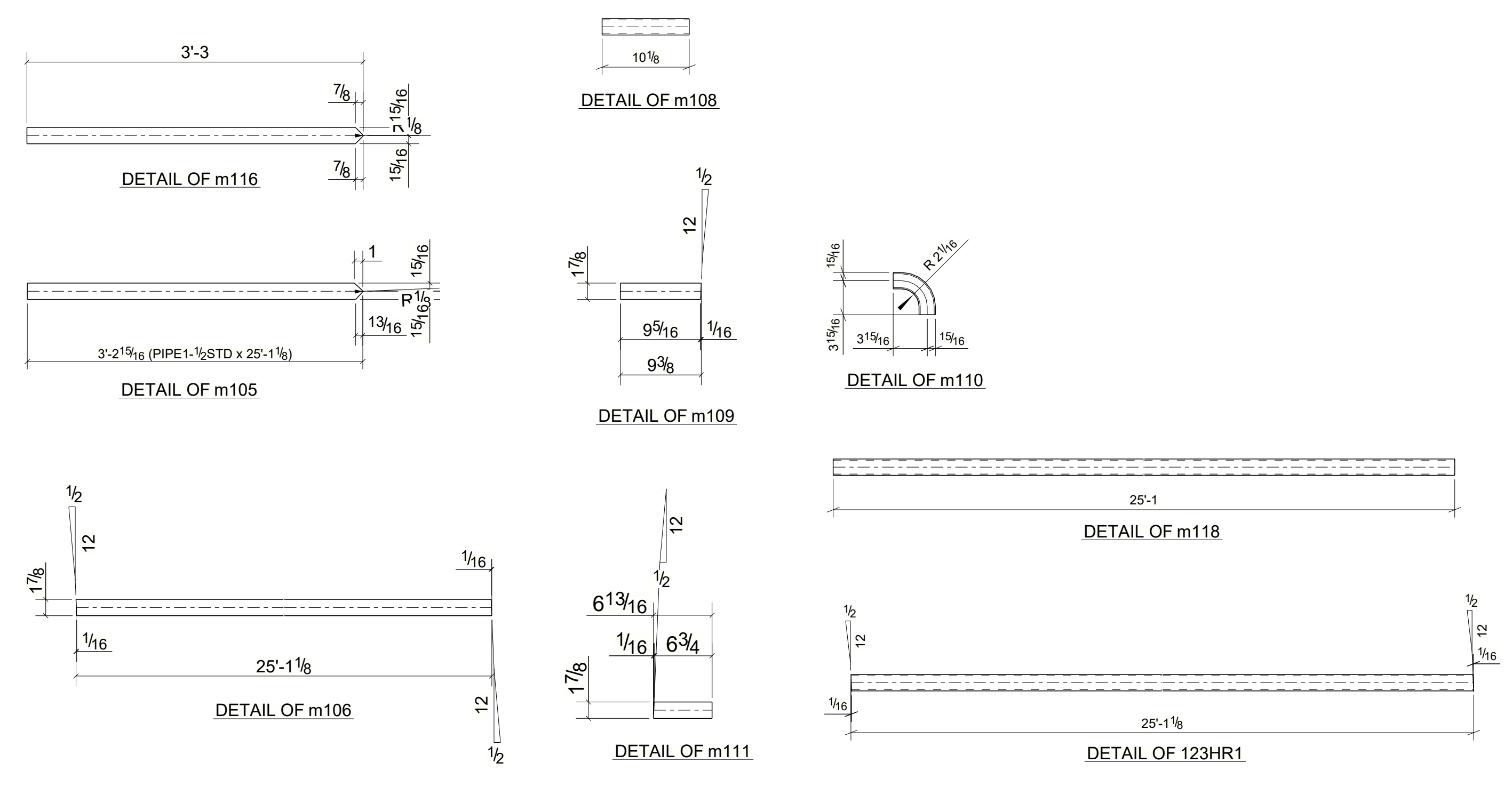
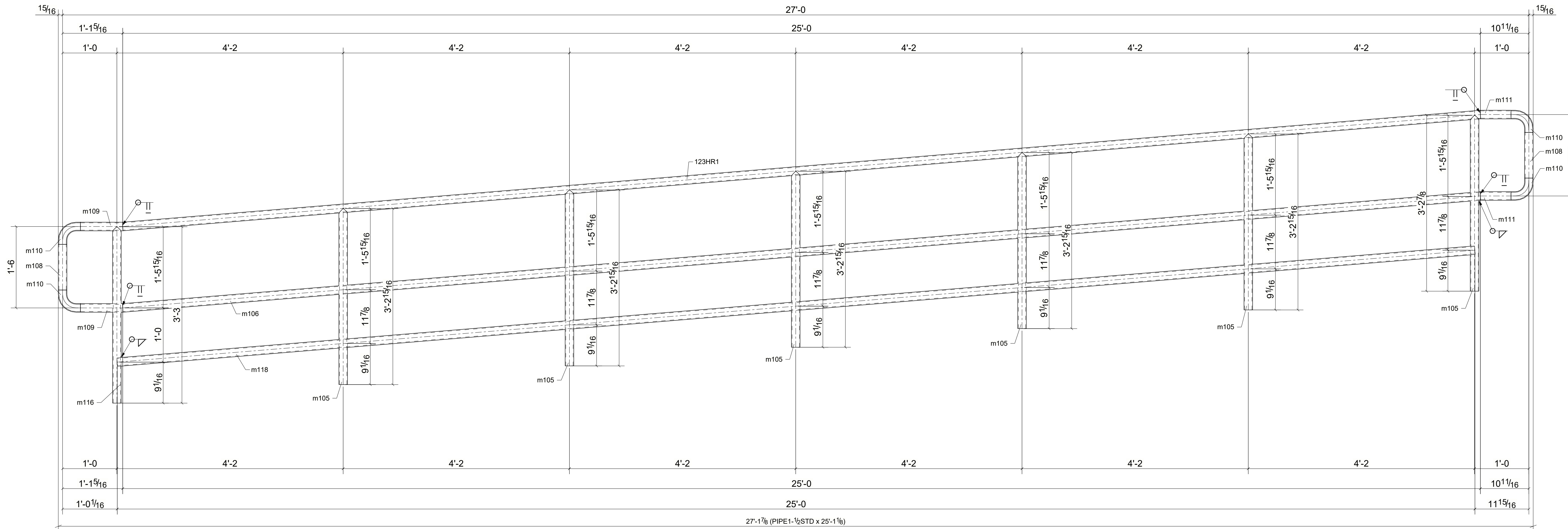
PRINT RECORD

DATE	REV.	FOR
02/25/2021	0	For Fabrication

SCALE	DATE	REVISIONS	DATE
DRAWN BY	02/25/2021	1	
CHECKED BY	02/25/2021	2	
APPROVED BY		3	
P.O. No.		JOB No.	SHEET No.
			129

SHIPPING BILL				BILL OF MATERIAL			
QTY	MARK	MARK	QTY	DESCRIPTION	LENGTH	WEIGHT	REMARKS
2	123HR1			HANDRAILS		267	
		123HR1	2	PIPE1-1/2STD	25'-1 1/8"	128	Stainless_Steel
		m105	12	PIPE1-1/2STD	3'-2 15/16"	99	Stainless_Steel
		m106	2	PIPE1-1/2STD	25'-1 1/8"	128	Stainless_Steel
		m108	4	PIPE1-1/2STD	0'-10 1/8"	9	Stainless_Steel
		m109	4	PIPE1-1/2STD	0'-9 3/8"	8	Stainless_Steel
		m110	8	BOI	BOI	11	Stainless_Steel
		m111	4	PIPE1-1/2STD	0'-6 13/16"	6	Stainless_Steel
		m116	2	PIPE1-1/2STD	3'-3"	17	Stainless_Steel
		m118	2	PIPE1-1/2STD	25'-1"	128	Stainless_Steel
TOTAL WEIGHT THIS DRAWING						534	

Member	TOTAL QTY.	FIELD BOLTS	LENGTH



ALL WELDS TO BE CONTINUOUS, GROUND TO SMALL RADIUS, SMOOTH AND FLUSH

For Fabrication

SHOP NOTES:
 1. ALL STEELS ARE A36 U.N.O.
 2. DENOTES CONNECTING SIDE MARK REF.DWG.
 PAINT: SHERWIN WILLIAMS HOLES: 13/16"Ø UNL. NTD.
 SURFACE PREP: SSPC-SP2/NACE NO.03 MIL THICKNESS - ELECTRODES: E70XX UNL. NTD.

REVISIONS		
NO.	DATE	BY
A	06/26/2020	MSK
B	08/20/2020	MSK
C	09/30/2020	MSK

DRAWN BY: MSK	CHK'D BY: PBH	JOB NO.	SHEET NO.
DATE: 06/23/2020	DATE: 06/23/2020		123

HANDRAIL TO BE STAINLESS STEEL PER ARCHITECTUAL DRAWING. ALL WELDS TO BE CONTINUOUS. ALL WELDS TO BE GROUND TO SMALL RADIUS, SMOOTH AND FLUSH.

2 - HANDRAILS - 123HR1

