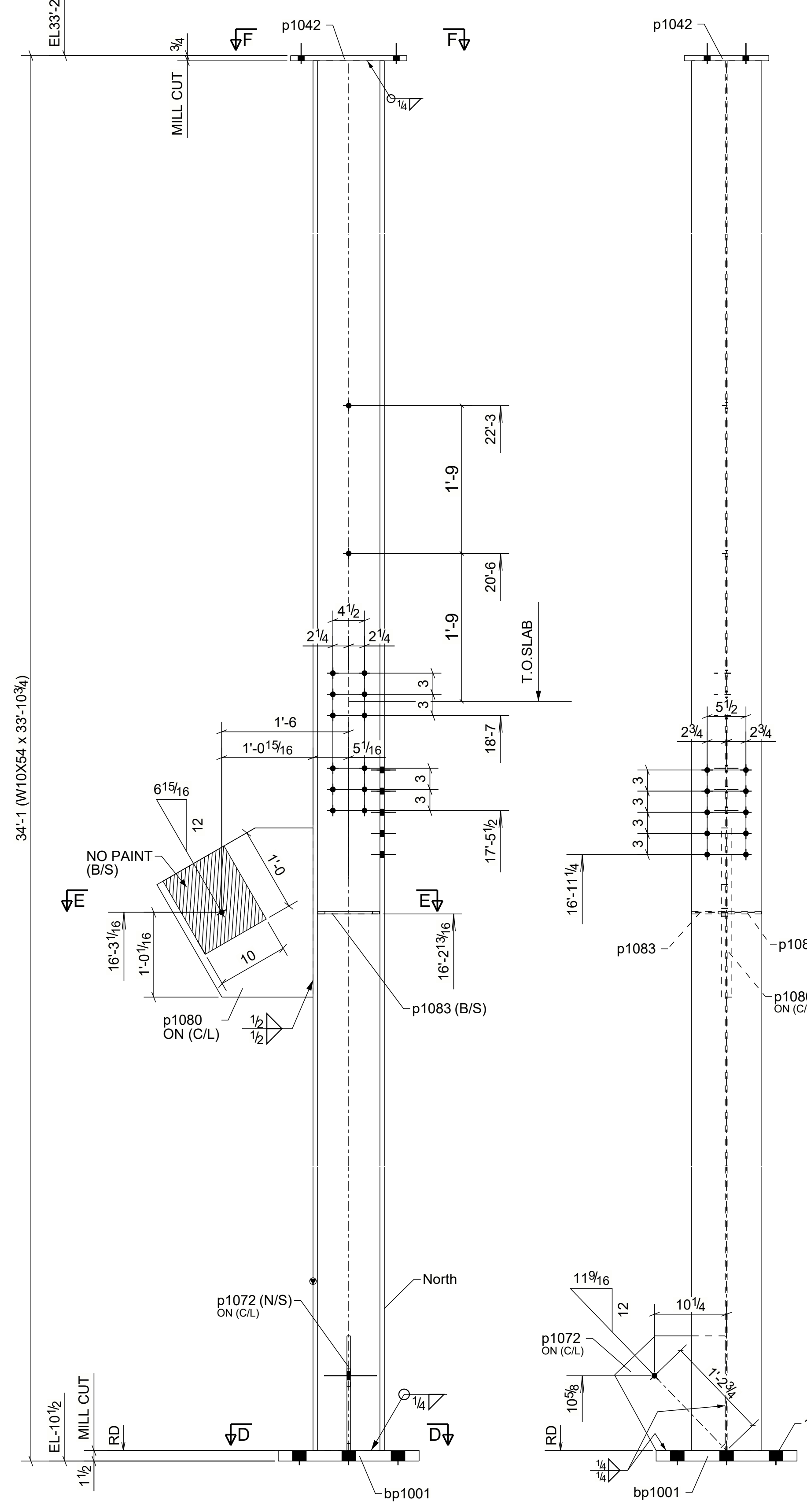


ONE - COLUMN - 1006C1

MEMBER	LOCATION	FROM ELEVATION
4-S/A-B		-11"

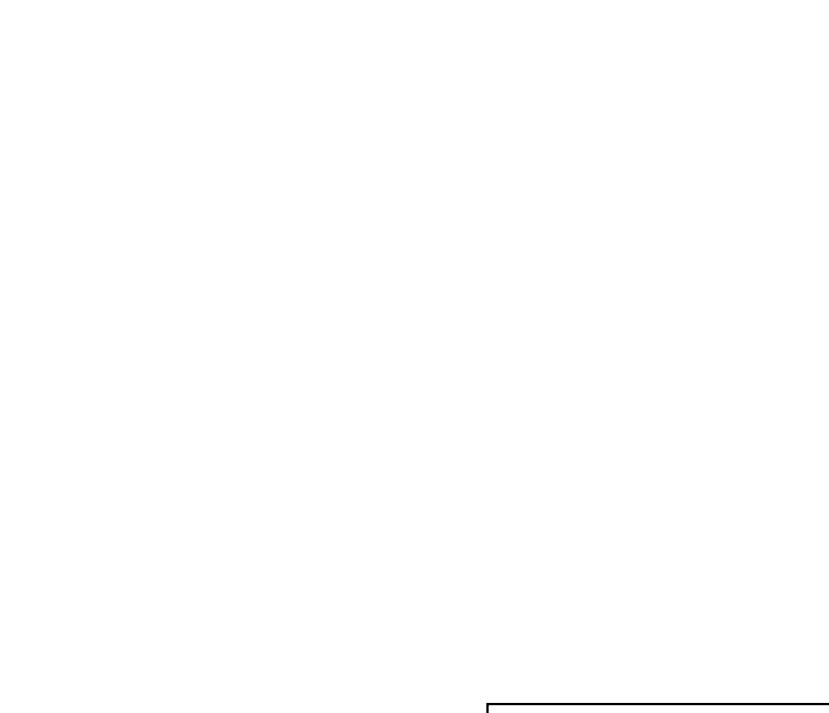
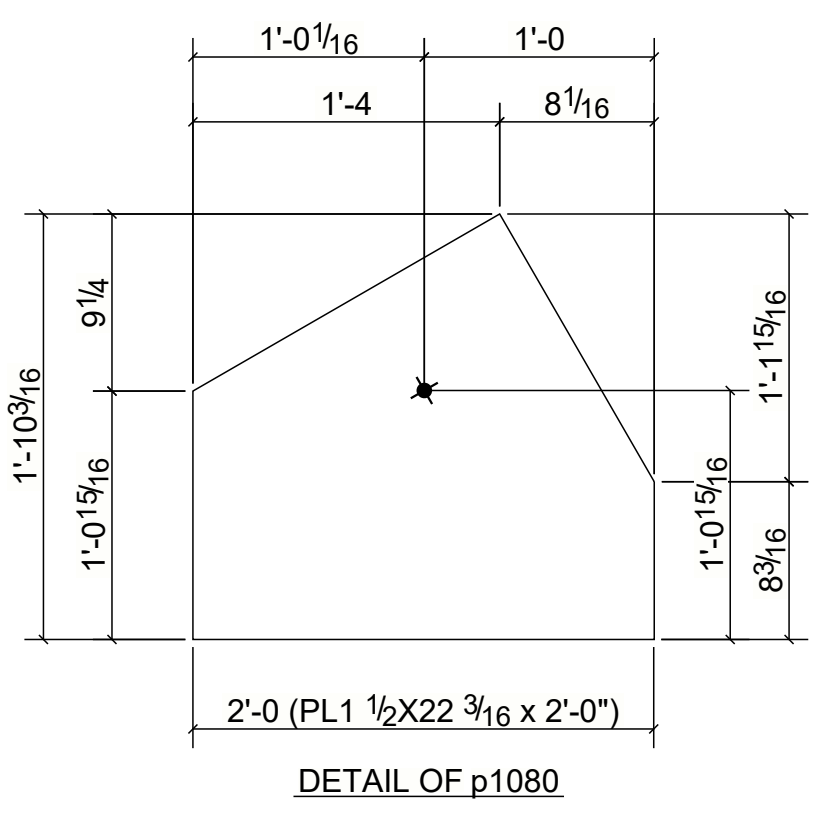
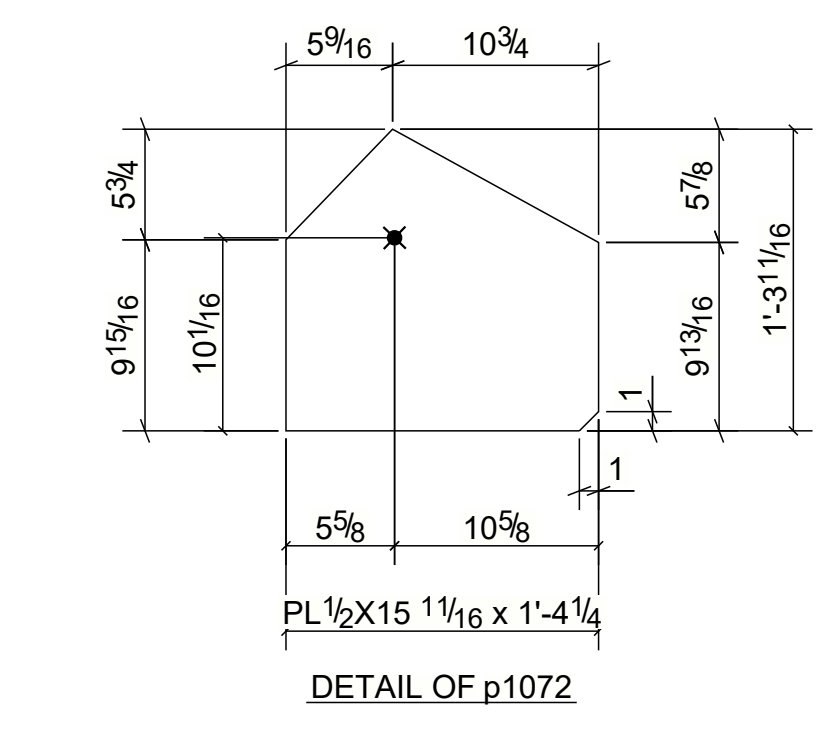
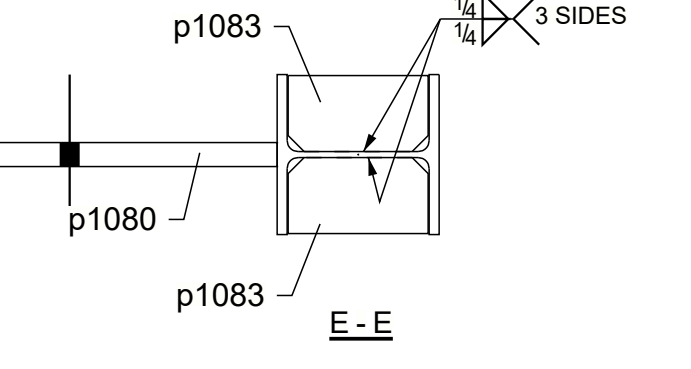
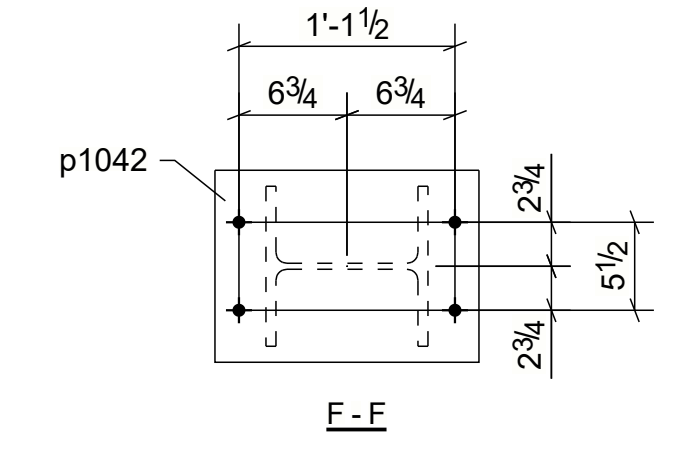
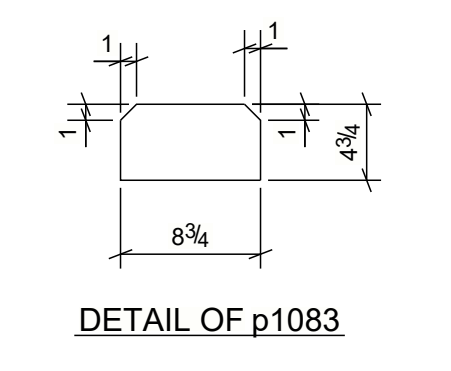
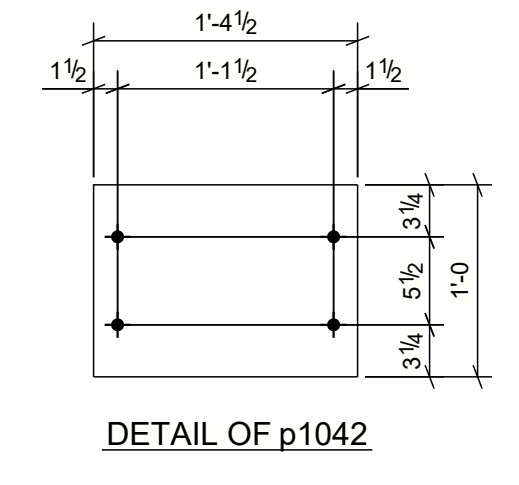
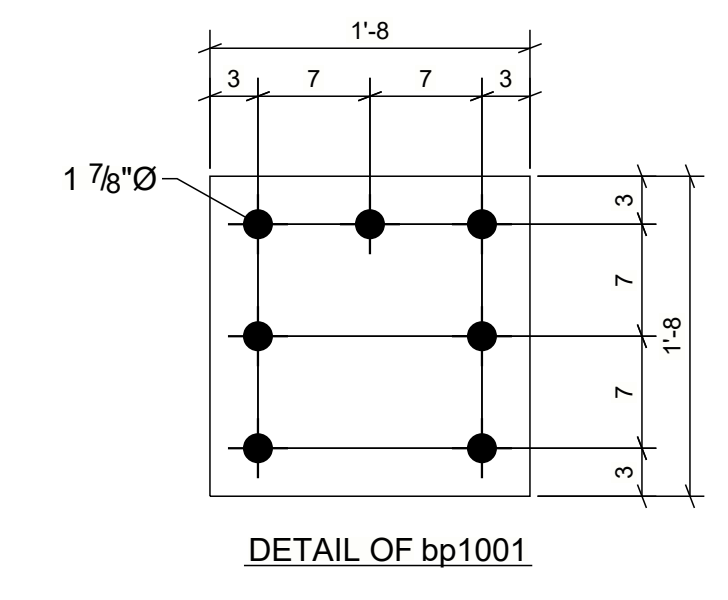


ONE - COLUMN - 1006C2

MEMBER	LOCATION	FROM ELEVATION
B/2		-10" 1/2"

SHIPPING BILL				BILL OF MATERIAL			
QTY	MARK	MARK	QTY	DESCRIPTION	LENGTH	WEIGHT	REMARKS
1	1006C1			COLUMNS		1177	C1041
		1006C1	1	HSS14X6X1/4	34'-5 5/8"	1051	A500-GR.C
		a1175	2	L6X4X3/8	0'-5"	10	A36
		a1181	2	L4X4X3/8	0'-11"	18	A36
		bp1008	1	PL3/4"X15"	1'-0"	67	A36
		p1089	1	PL3/4"X7"	1'-8"	30	A36
		p1201	2	PL3/8"X3 5/8"	0'-3 5/8"	1	A36
1	1006C2			COLUMNS		2244	C1015
		1006C2	1	W10X54	33'-10 3/4"	1823	A992
		bp1001	1	PL1 1/2"X20"	1'-8"	170	A36
		p1042	1	PL3/4"X12"	1'-4 1/2"	42	A36
		p1072	1	PL1 1/2"X15 11/16"	1'-4 1/4"	29	A36
		p1080	1	PL1 1/2"X22 3/16"	2'-0"	171	A36
		p1083	2	PL3/8"X4 3/4"	0'-8 3/4"	9	A36
TOTAL WEIGHT THIS DRAWING						3422	

Member	TOTAL QTY.	FIELD BOLTS	LENGTH
1006C2	4	3/4"Ø A325N_TC BOLT	0'-2 1/2"
1006C1	4	3/4"Ø A325N_TC BOLT	0'-2 1/4"



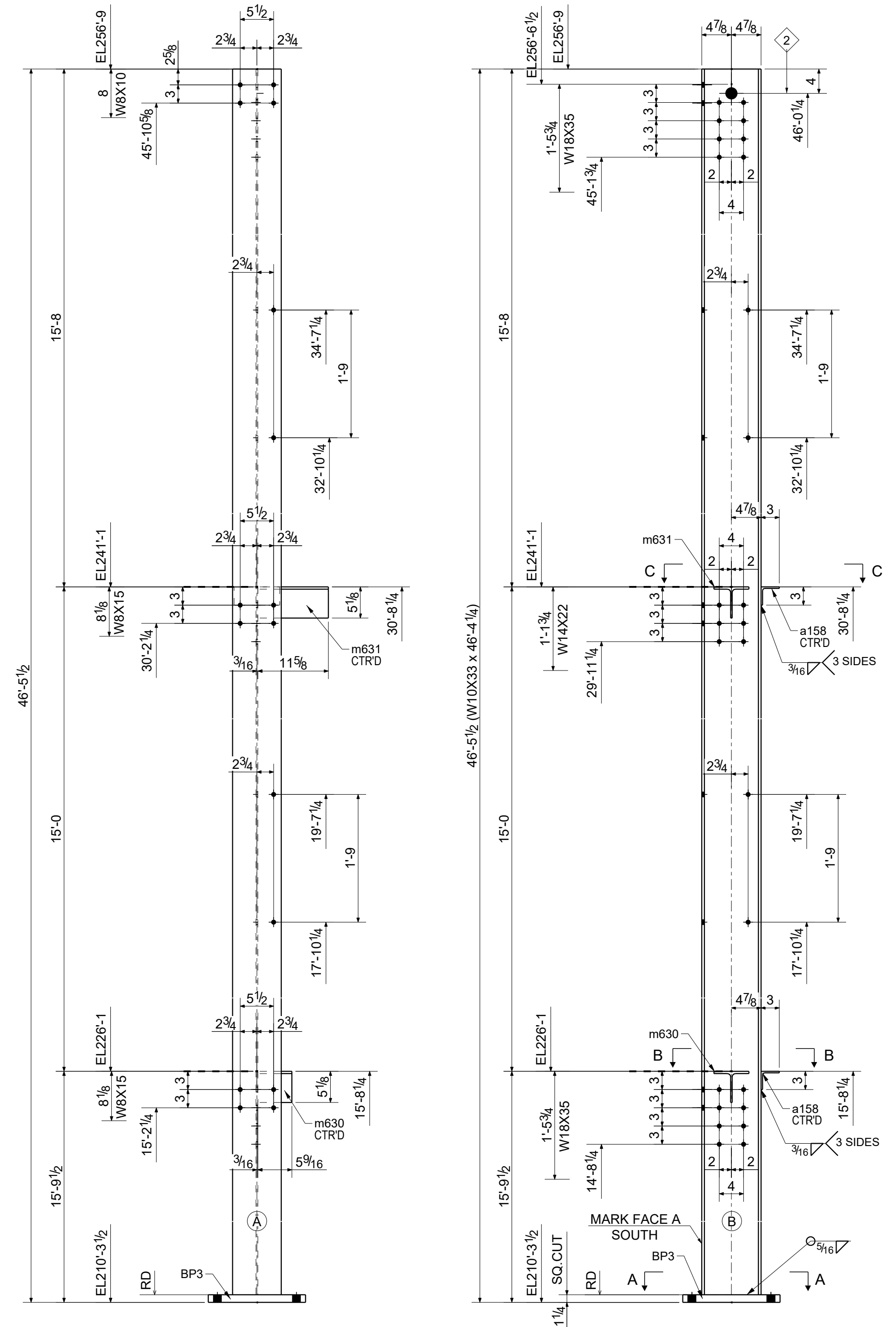
SHOP NOTES:
 1. ALL STEELS ARE A36 U.N.O.
 2. Ⓢ - DENOTES CONNECTING SIDE MARK.
 PAINT : CENTURY COATING 220-D-344 GRAY PRIMER HOLES : 13/16" UNL. NTD.
 SURFACE PREP : MIL THICKNESS ELECTRODES : E70XX UNL. NTD.

REVISIONS		
NO.	DATE	BY
0	01/12/2021	PBH
A	11/20/2020	JM

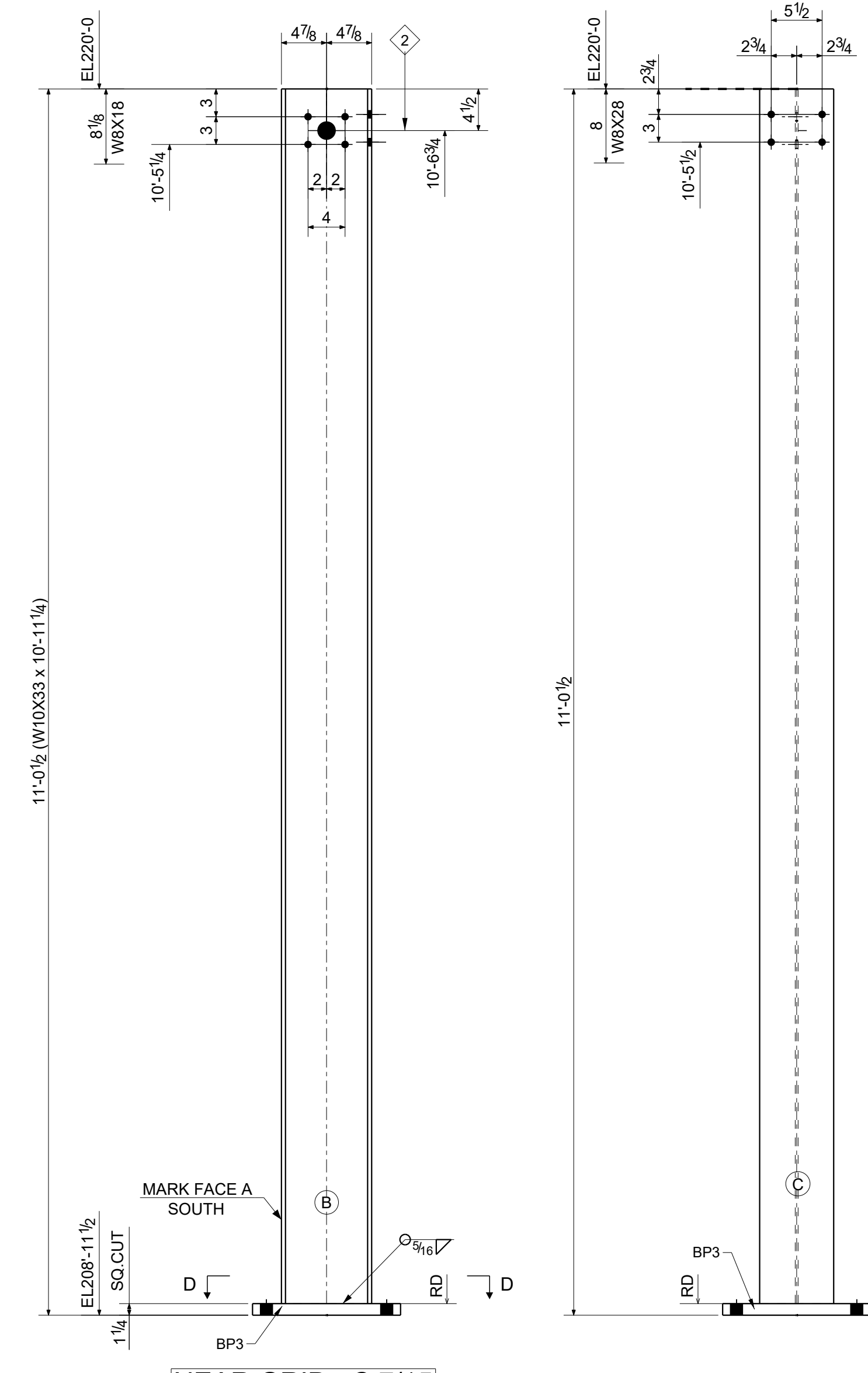
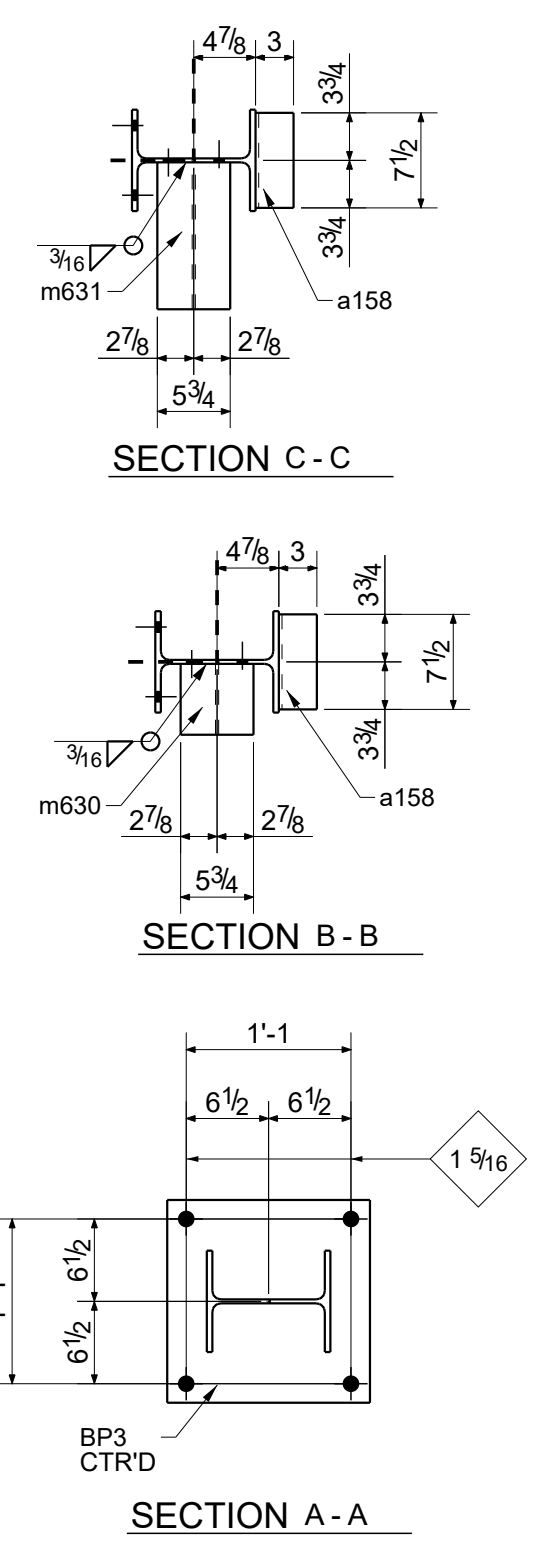
NOTICE TO CONTRACTORS AND ERECTOR
 BACK CHARGES FOR CORRECTIVE WORK OR REPLACED MATERIALS WILL NOT BE ACCEPTED UNLESS AUTHORIZED IN WRITING BY POSTEL INTERNATIONAL INC. BEFORE SUCH COSTS ARE INCURRED

BILL OF MATERIAL										
QUANTITY	SHIPPING MARK	No. PCS	MATERIAL	LENGTH FT.	IN	PIECE MARK	GRADE	FINISH	CAMBER	REMARKS
1	109C1	1	W10X33	46'	4 1/4		A992			SIE
		1	PL1 1/4X16	1'	4	BP3	A36			
		2	L3X3X1/4	0'	7 1/2	a158	A36			
		1	WT5X11	0'	5 9/16	m630	A992			
		1	WT5X11	0'	11 5/8	m631	A992			
1	109C2	1	W10X33	10'	11 1/4		A992			SIE
		1	PL1 1/4X16	1'	4	BP3	A36			

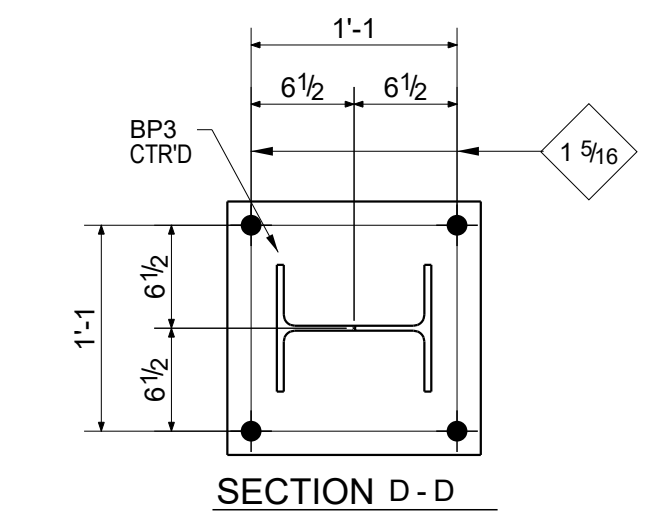
ALL MATERIAL A36 UNLESS NOTED Total Weight:



GRID : B.6/15.1
ONE - COLUMN - 109C1



NEAR GRID : C.7/15
ONE - COLUMN - 109C2



SHOP NOTE:
 MISLOCATED HOLES MAY BE LEFT OPEN OR PLUG WELDED (MUST BE DONE IN ACCORDANCE WITH AWS D1.1 SECTION 5.26.5)

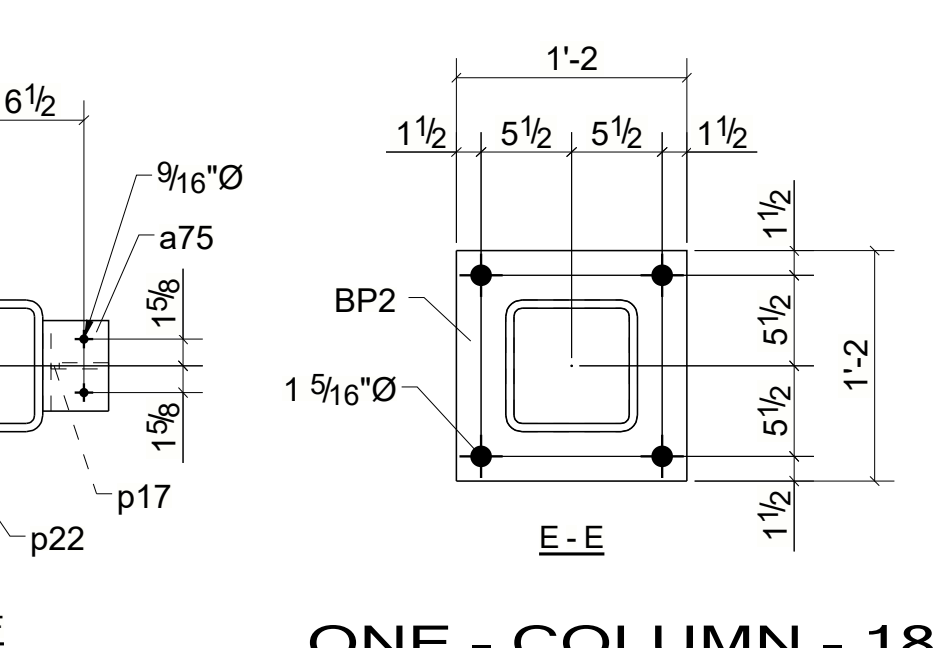
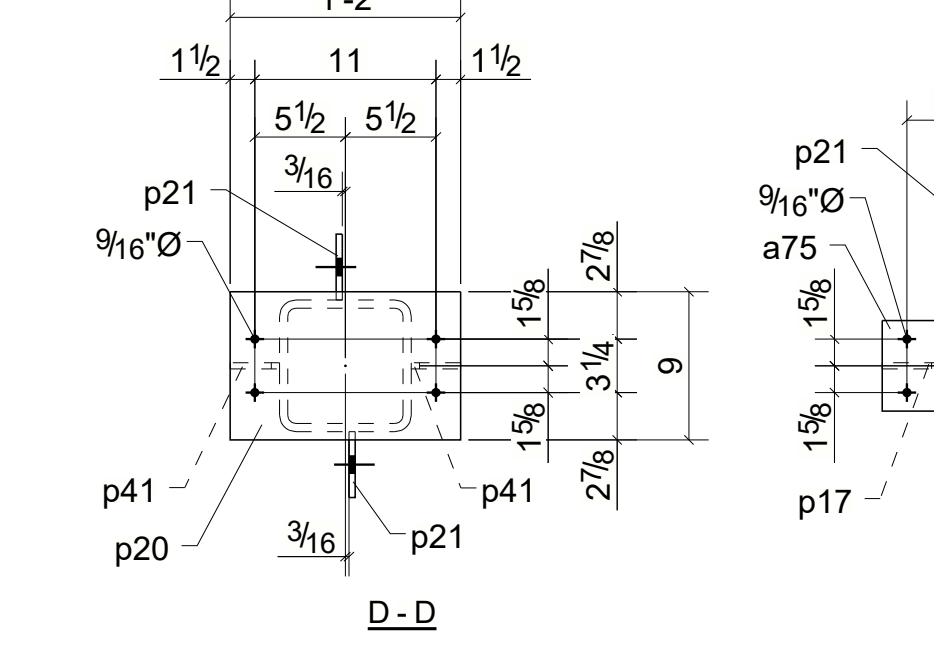
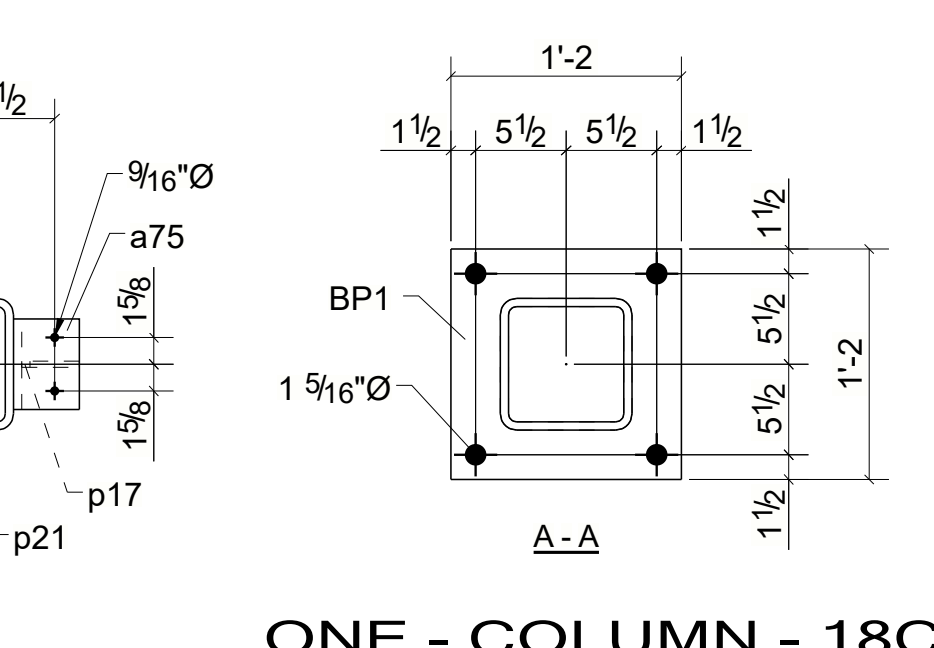
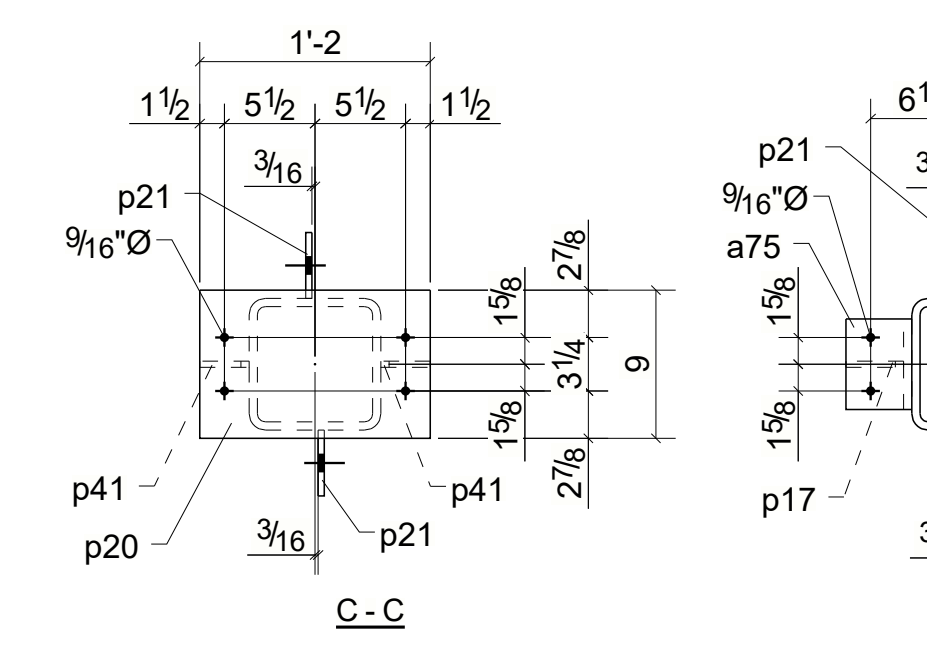
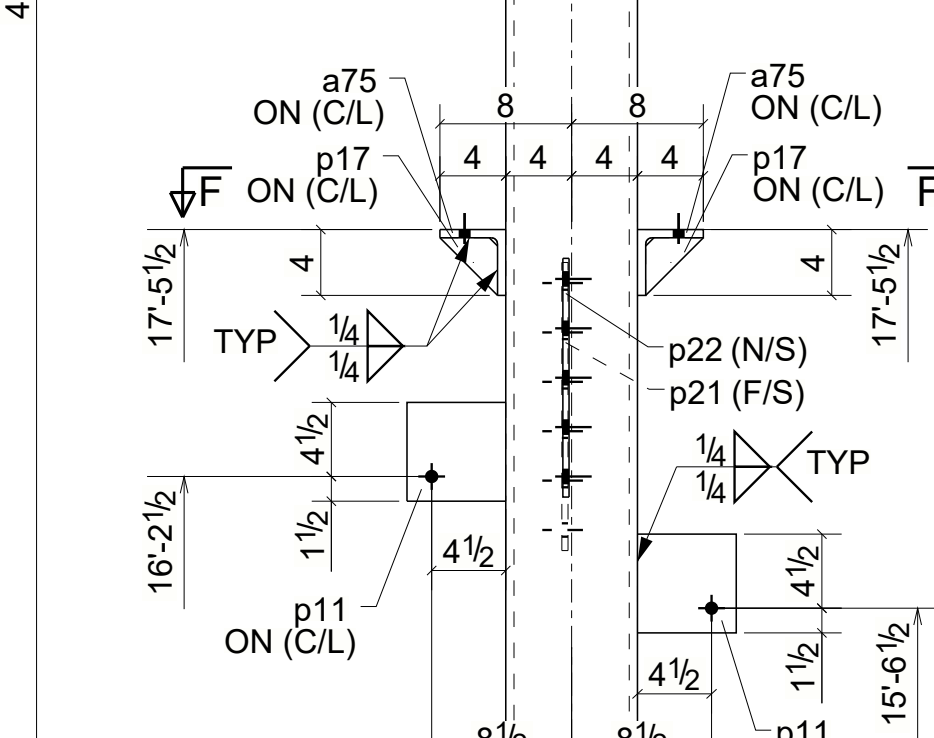
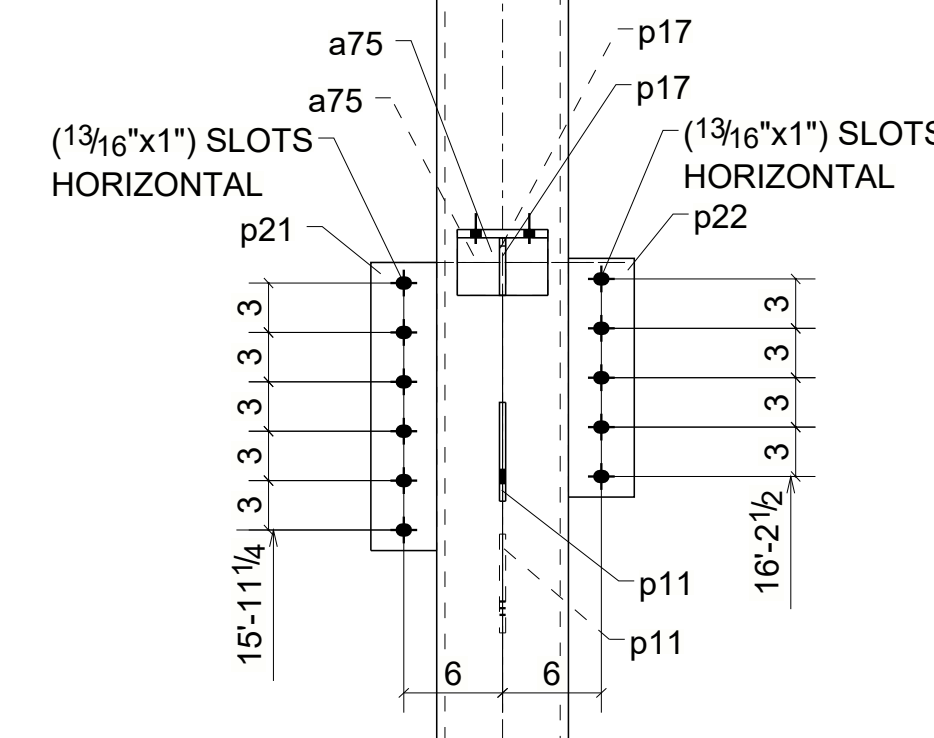
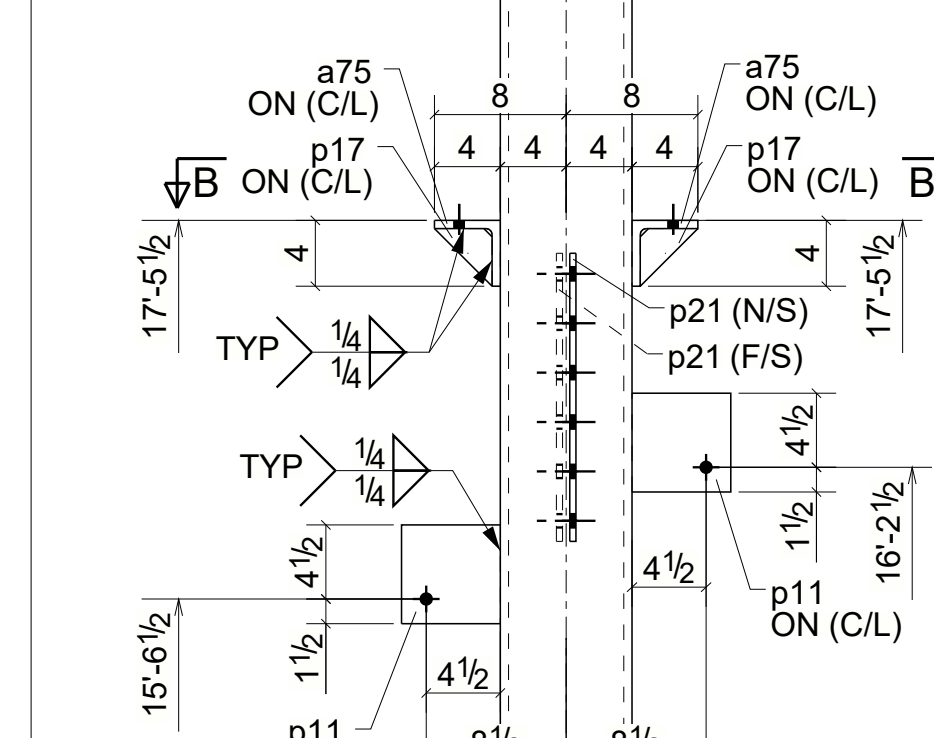
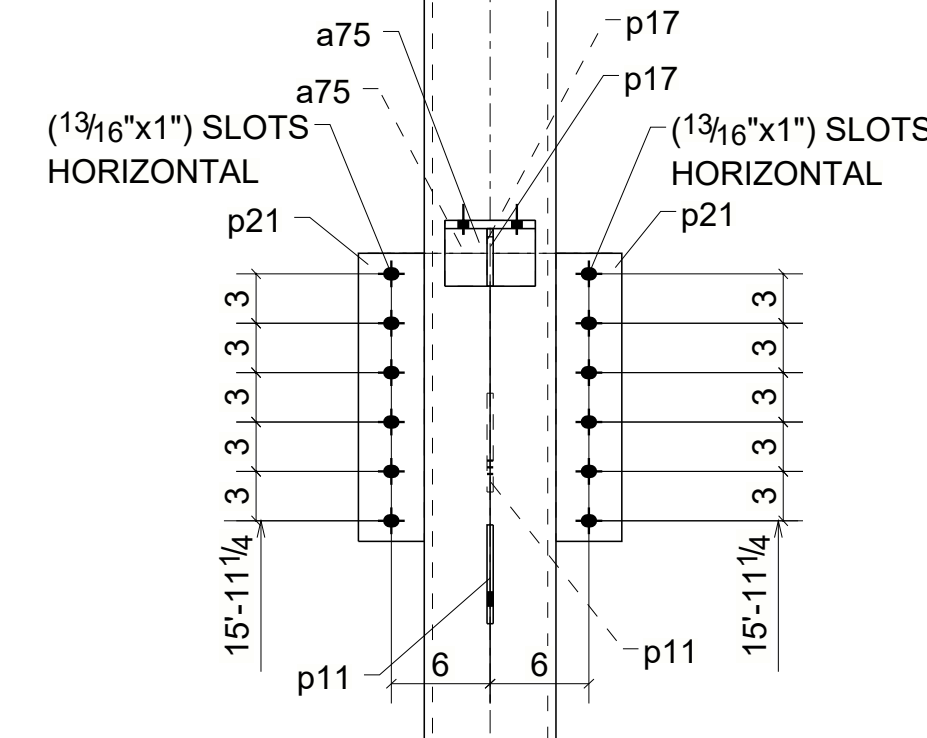
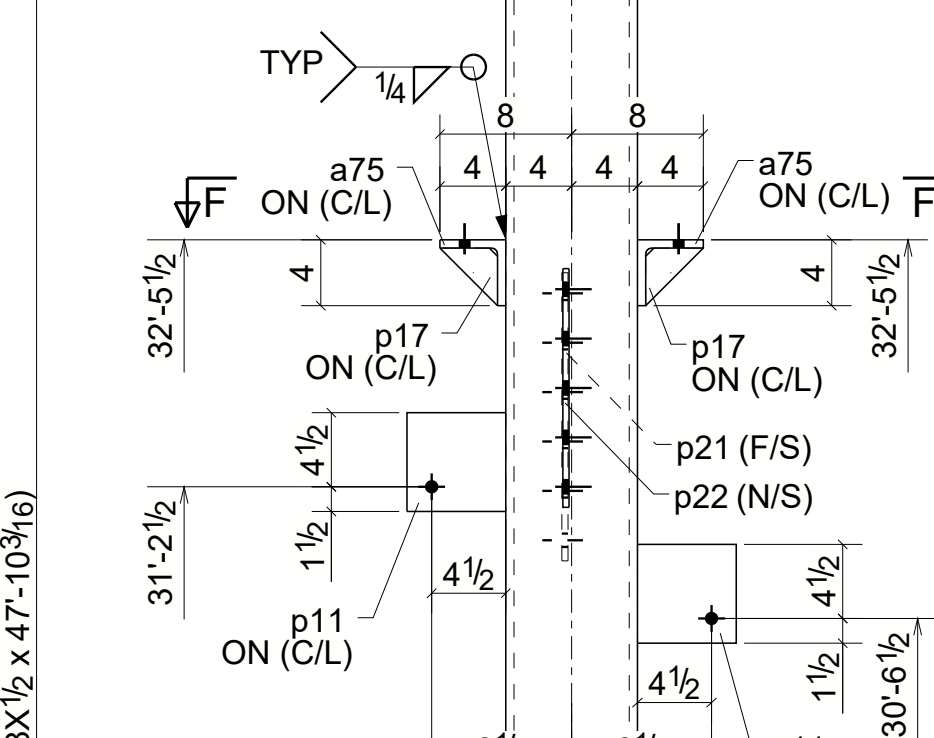
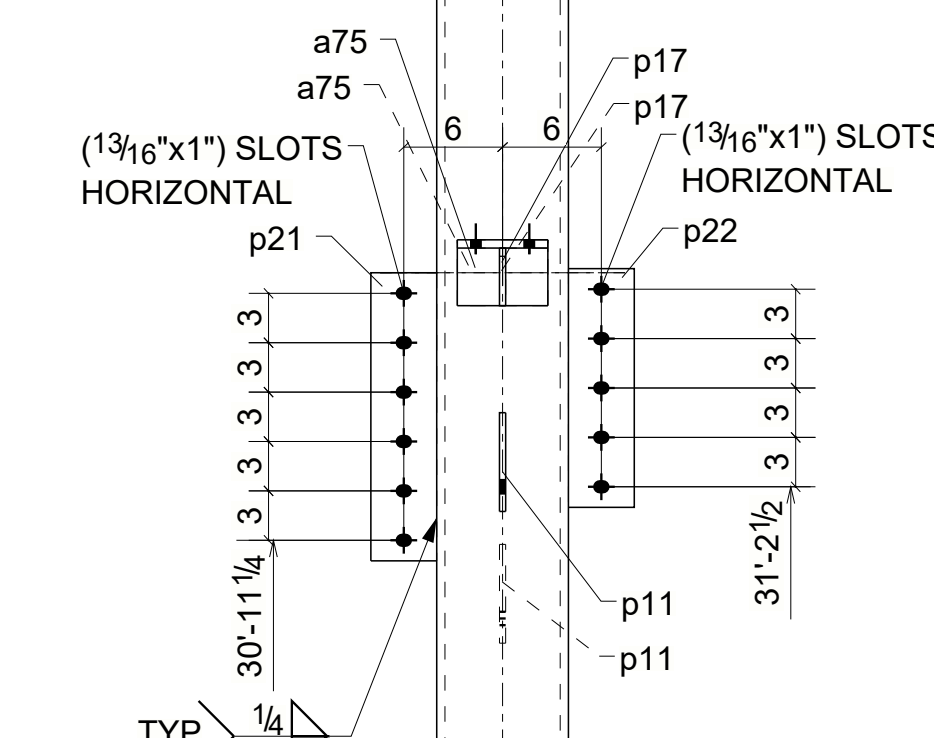
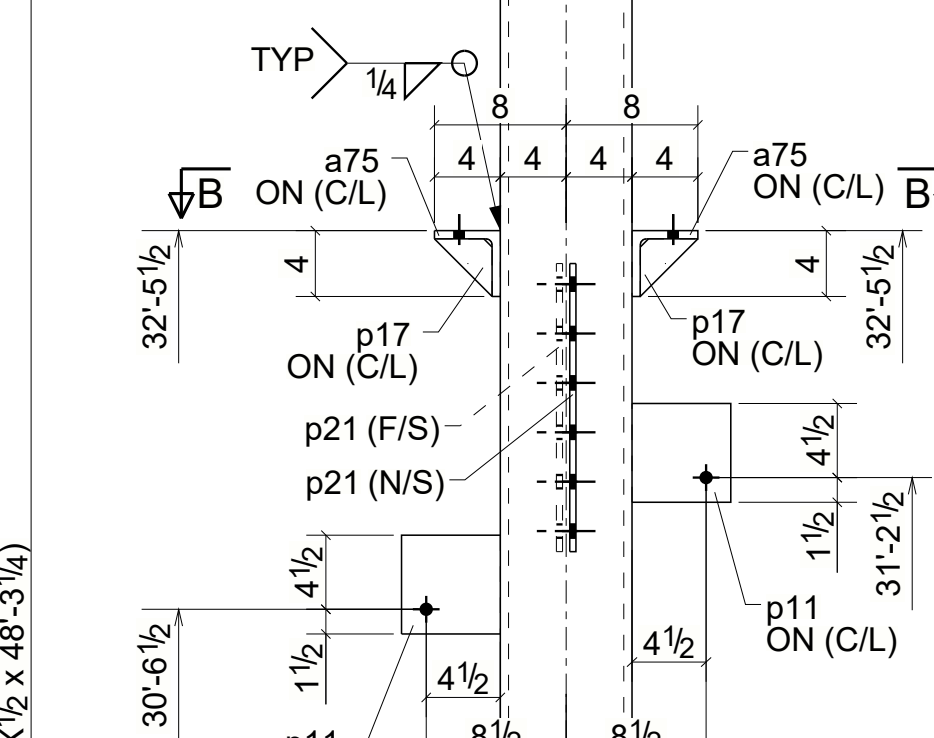
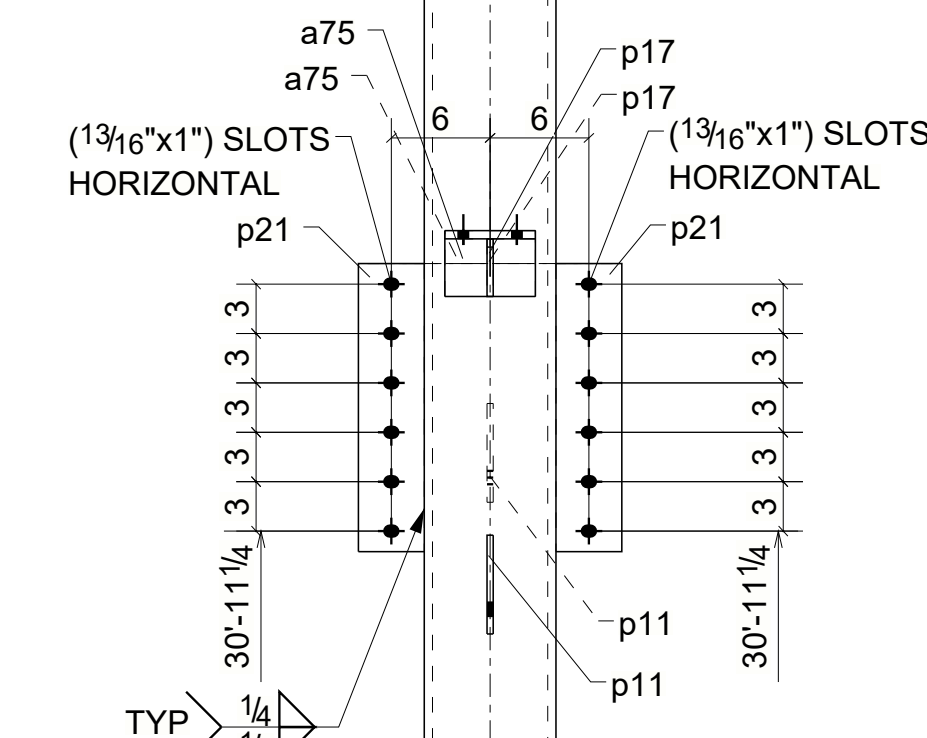
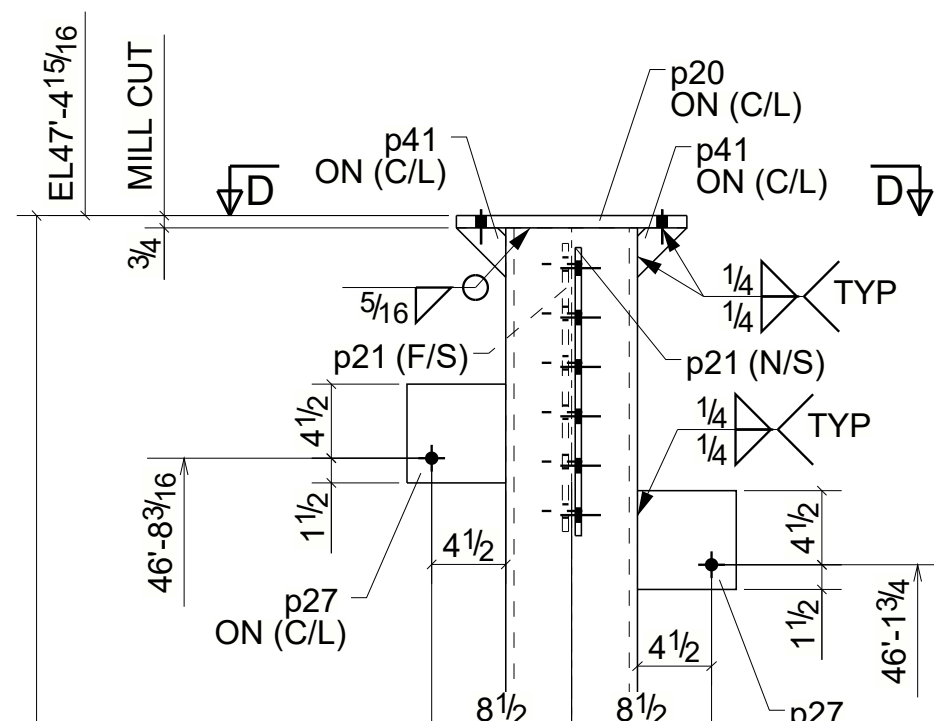
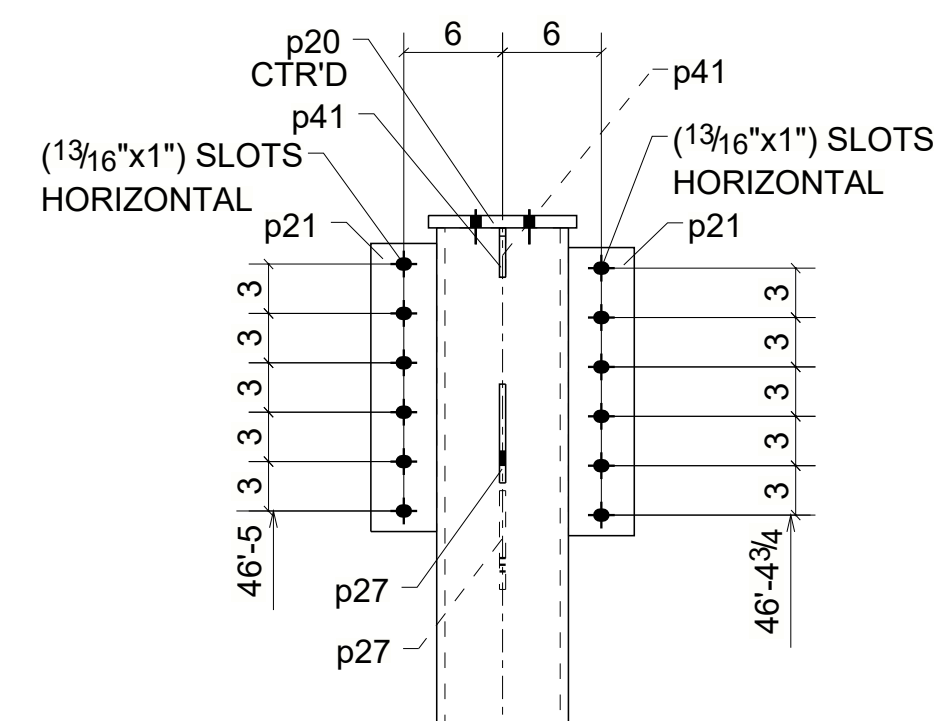
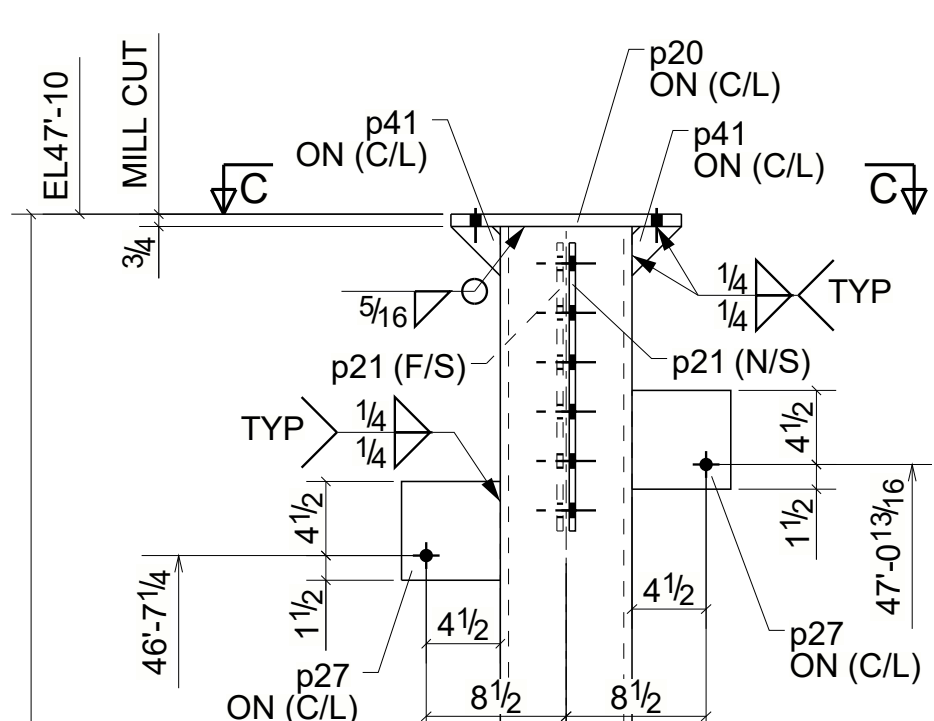
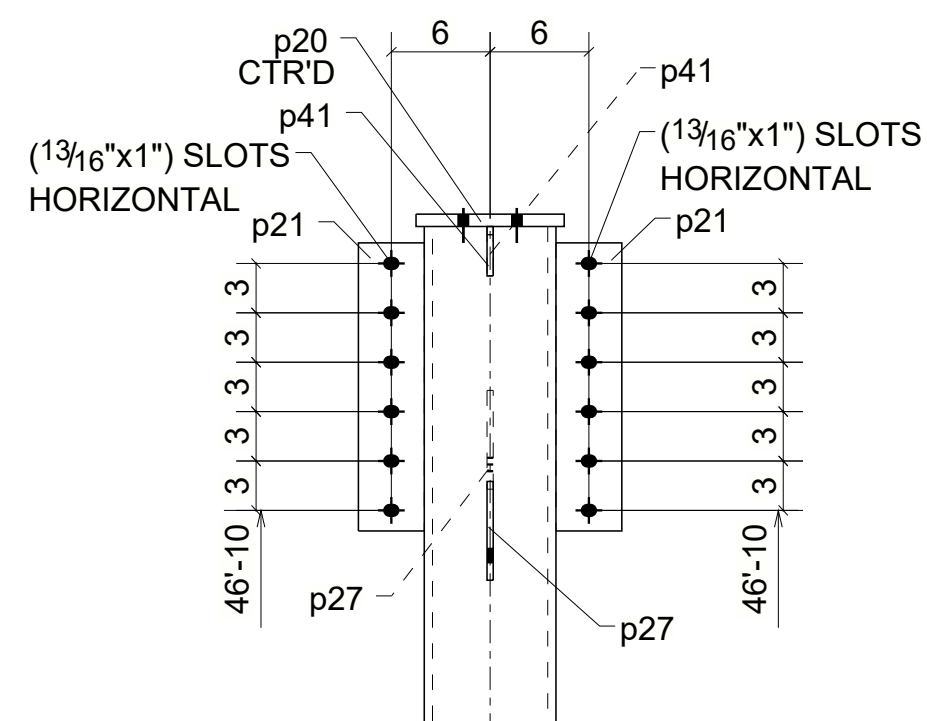
Seq-1

ALL 13/16" HOLES U.N.O.	PROJECT:	
WELDS: E70XX	LOCATION:	
CLEAN: SSPC-SP6	ARCHITECT:	
PAINT: SHOP PRIMER	CONTRACTOR:	
	DRAWN BY MK	SCALE NTS
	CHKD BY PBH	DATE 11/26/2019
	TRACED	APPD
		JOB NO.
		DRAWING NO. 109

RESERVED FOR OFFICE STAMPING

JOB NO.						SHEET. 18
PAINT: 1-SIC PRIMER						
SHIPPING QUAN.	QUAN.	PIECE MARK	DESCRIPTION	LENGTH	WEIGHT	REMARKS
1	1	18C1	COLUMN			
	1		HSS8X8X1/2	48'-3 1/4"	2218	A500-GR.B
	1	BP1	PL1"X14"	1'-2"	56	A36
	4	a75	L4X4X1/2	0'-5 1/2"	23	A36
	4	p11	PL3/8"X6"	0'-6"	15	A36
	4	p17	PL3/8"X3 1/2"	0'-3 1/2"	3	A36
	1	p20	PL3/4"X9"	1'-2"	27	A36
	6	p21	PL3/8"X4"	1'-5 1/2"	45	A36
	2	p27	PL3/8"X6"	0'-6"	8	A36
	2	p41	PL3/8"X3"	0'-3"	1	A36
TOTAL WEIGHT THIS DRAWING						4767

ERECTION BOLTS					
BOLT QTY'S ARE FOR ONE ASSEMBLY ONLY					
MARK	QTY	BOLT DESCRIPTION	GRADE	SITE/WORKSHOP	
18C1	8	BOLT 1/2"DIA A307 1"1/2	A307	Site	
18C1	4	BOLT 1/2"DIA A307 1"3/4	A307	Site	
BOLT QTY'S ARE FOR ONE ASSEMBLY ONLY					
MARK	QTY	BOLT DESCRIPTION	GRADE	SITE/WORKSHOP	
18C2	8	BOLT 1/2"DIA A307 1"1/2	A307	Site	
18C2	4	BOLT 1/2"DIA A307 1"3/4	A307	Site	



ONE - COLUMN - 18C1

ONE - COLUMN - 18C2

- GENERAL NOTES:
- All Holes 13/16" Unless Noted.
 - Finish 1-SIC PRIMER
 - Seal Weld With 1/4" Fillet.
 - Weld E70XX Unless Noted.

DATE	REV.	FOR

SCALE	DATE	REVISIONS	DATE
DRAWN BY MSK	02/19/2021	1	
CHECKED BY PBH	02/19/2021	2	
APPROVED BY		3	