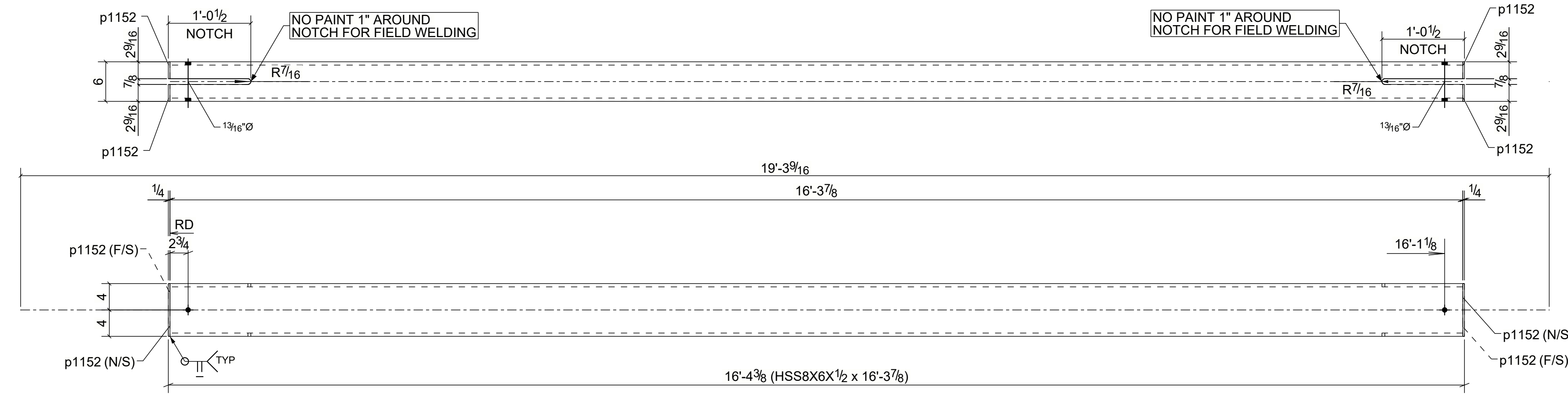
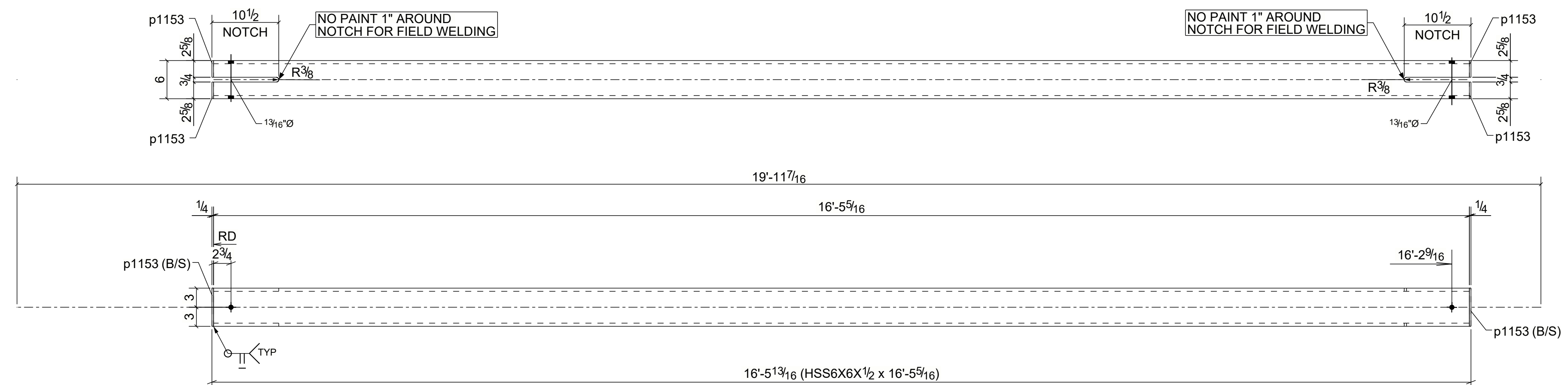


SHIPPING BILL				BILL OF MATERIAL			
QTY	MARK	MARK	QTY	DESCRIPTION	LENGTH	WEIGHT	REMARKS
2	1171D1			VERTICAL BRACES		650	B1013
		1171D1	2	HSS8X6X1/2	16'-3 7/8"	1289	A500-GR.C
		p1152	8	PL1/4"x2 9/16"	0'-8"	12	A36
1	1171D2			VERTICAL BRACES		550	B1012
		1171D2	1	HSS6X6X1/2	16'-5 5/16"	545	A500-GR.C
		p1153	4	PL1/4"x2 5/8"	0'-6"	4	A36
TOTAL WEIGHT THIS DRAWING						1850	

Member	TOTAL QTY.	FIELD BOLTS	LENGTH
1171D1	4	3/4" A307 BOLT	0'-7"
1171D2	2	3/4" A307 BOLT	0'-7"



**2 - VERTICAL BRACES - 1171D1**



**ONE - VERTICAL BRACE - 1171D2**

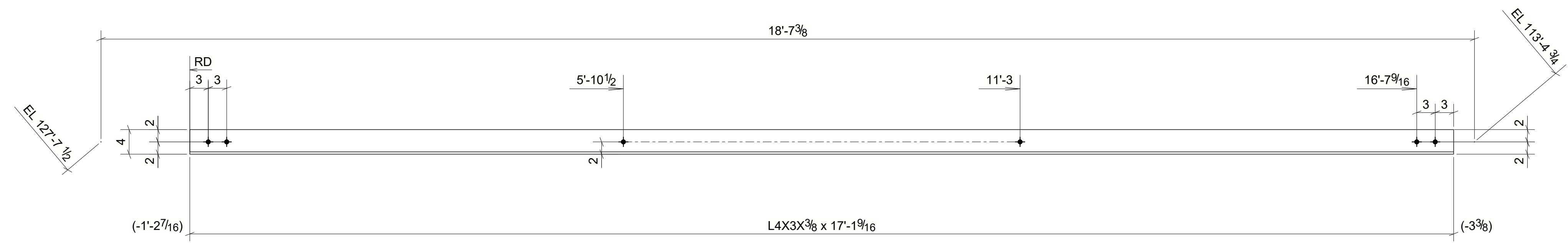
For Fabrication

SHOP NOTES:  
 1. ALL STEELS ARE A36 U.N.O. REF.DWG. E1004,E1013  
 2. Ⓢ - DENOTES CONNECTING SIDE MARK.  
 PAINT : CENTURY COATING 220-D-344 GRAY PRIMER HOLES : 13/16" UNL. NTD.  
 SURFACE PREP : - MIL THICKNESS ELECTRODES : E70XX UNL. NTD.

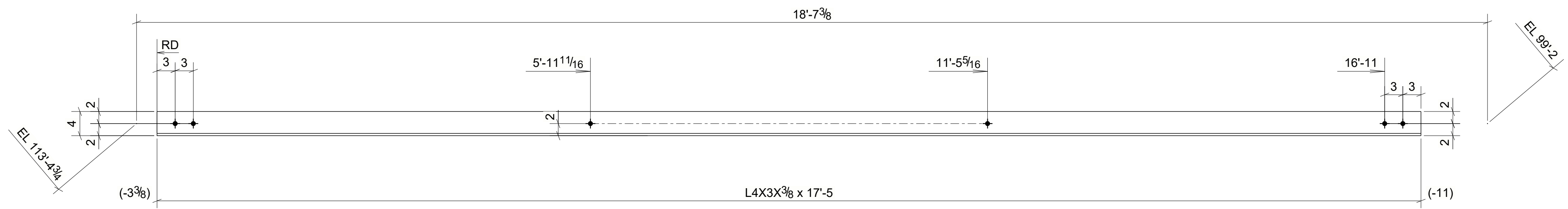
REVISIONS		
NO.	DATE	BY
Δ	01/12/2021	PBH
Δ	11/20/2020	JM

**NOTICE TO CONTRACTORS AND ERECTOR**  
 BACK CHARGES FOR CORRECTIVE WORK OR REPLACED MATERIALS WILL NOT BE ACCEPTED UNLESS AUTHORIZED IN WRITING BY POSTEL INTERNATIONAL INC. BEFORE SUCH COSTS ARE INCURRED

DRAWN BY: VRK CHKD BY: PBH JOB NO. SHEET NO. 1171  
 DATE: 10/26/2020 DATE: 10/26/2020



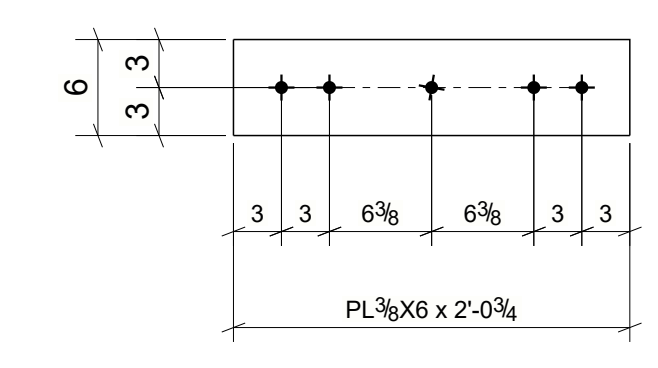
**2 - BRACES - 118BR1**



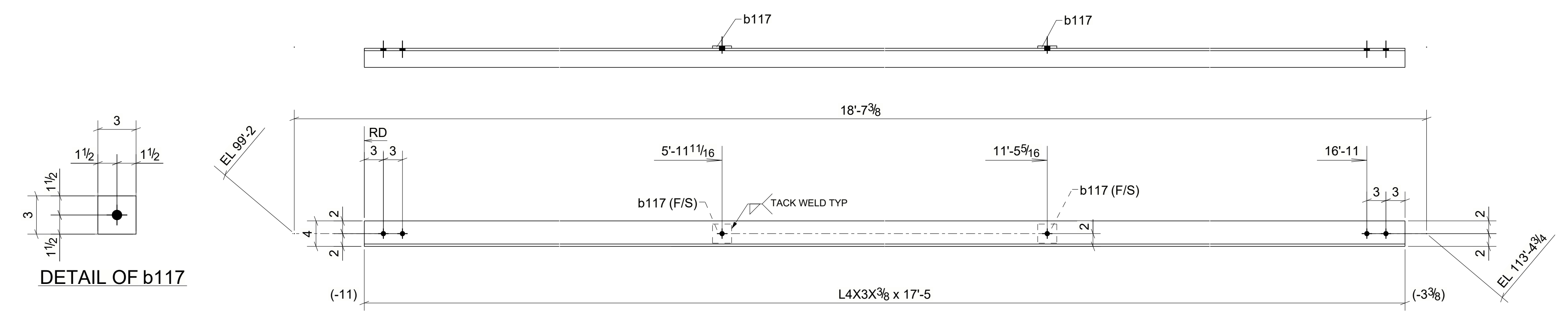
**2 - BRACES - 118BR2**

SHIPPING BILL				BILL OF MATERIAL			
QTY	MARK	MARK	QTY	DESCRIPTION	LENGTH	WEIGHT	REMARKS
2	118BR1			BRACES		145	118BR1
		118BR1	2	L4X3X3/8	17'-1 9/16"	290	
2	118BR2			BRACES		148	118BR2
		118BR2	2	L4X3X3/8	17'-5"	295	
2	118BR3			BRACES		149	118BR3
		118BR3	2	L4X3X3/8	17'-5"	295	
		b117	4	PL3/8"X3"	0'-3"	4	A36
2	118P1			GUSSET_PLATES		16	
		118P1	2	PL3/8"X6"	2'-0 3/4"	32	
TOTAL WEIGHT THIS DRAWING						916	

Member	TOTAL QTY.	FIELD BOLTS	LENGTH
118BR1	8	3/4"Ø A325N BOLT	0'-2 1/4"
118BR3	12	3/4"Ø A325N BOLT	0'-2 1/4"
118P1	2	3/4"Ø A325N BOLT	0'-2 1/4"



**2 - GUSSET PLATES - 118P1**



**2 - BRACES - 118BR3**

SHOP NOTES:  
 1. ALL STEELS ARE A36 U.N.O.  
 2. Ⓢ - DENOTES CONNECTING SIDE MARK  
 REF.DWG. E106  
 PAINT: Century Coating 220-D-334, Grey Primer U.N.O. HOLES: 13/16"Ø U.N.O. UNL. NTD.  
 SURFACE PREP: SSPC SP2 MIL THICKNESS - ELECTRODES: E70XX/E7XT-X UNL. NTD.

REVISIONS		
NO.	DATE	BY
A	05/20/2020	SSP
B	06/29/2020	SSP
C	07/21/2020	SSP

DRAWN BY: SSP CHKD BY: PBH JOB NO. SHEET NO. 118  
 DATE: 05/16/2020 DATE: 05/17/2020

CITY OF HOUSTON APPROVED FABRICATOR # 867

NOTICE TO CONTRACTORS AND ERECTOR  
 BACK CHARGES FOR CORRECTIVE WORK OR REPLACED MATERIALS WILL NOT BE ACCEPTED UNLESS AUTHORIZED IN WRITING BY POSTEL INTERNATIONAL INC. BEFORE SUCH COSTS ARE INCURRED