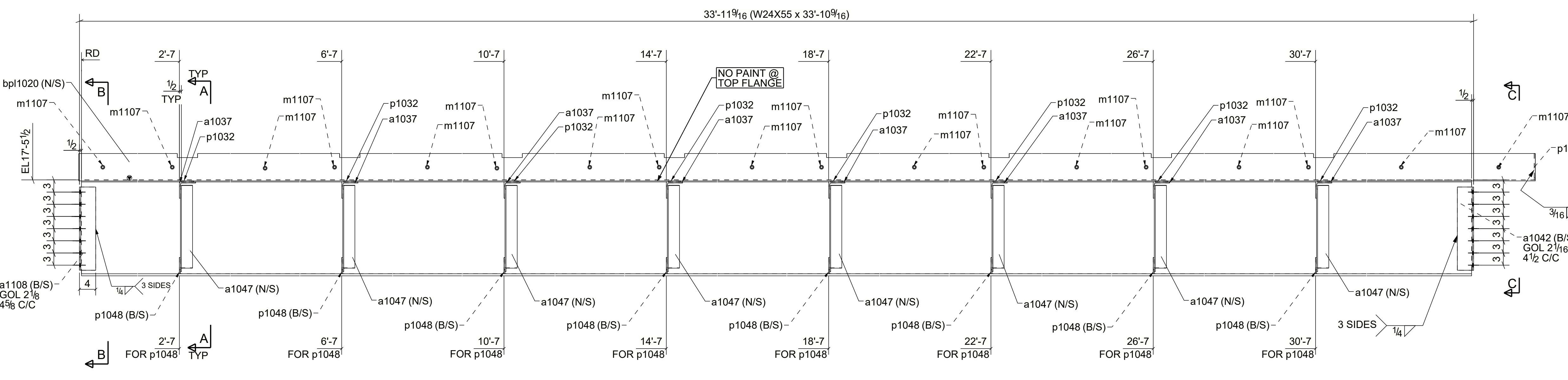
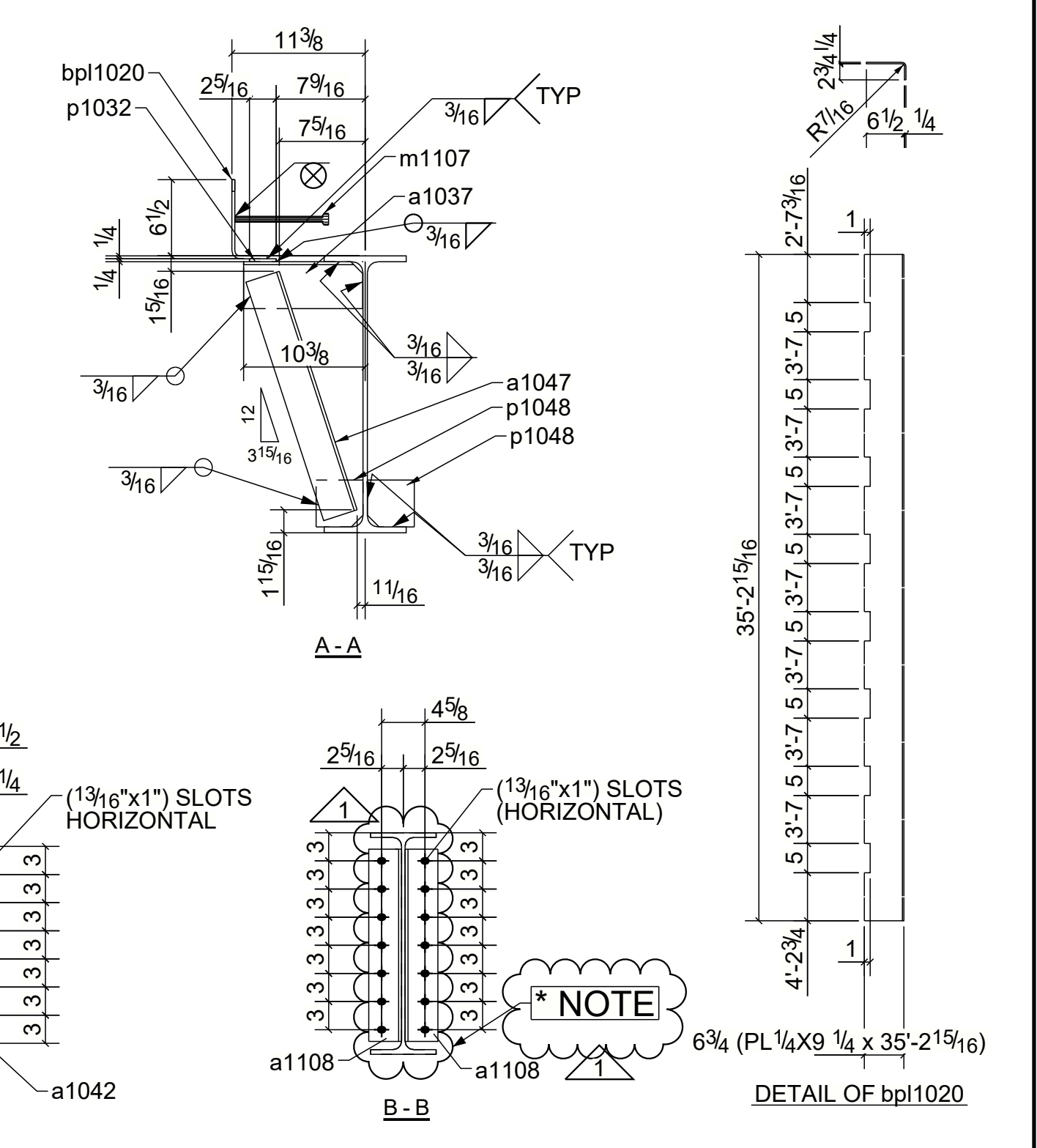
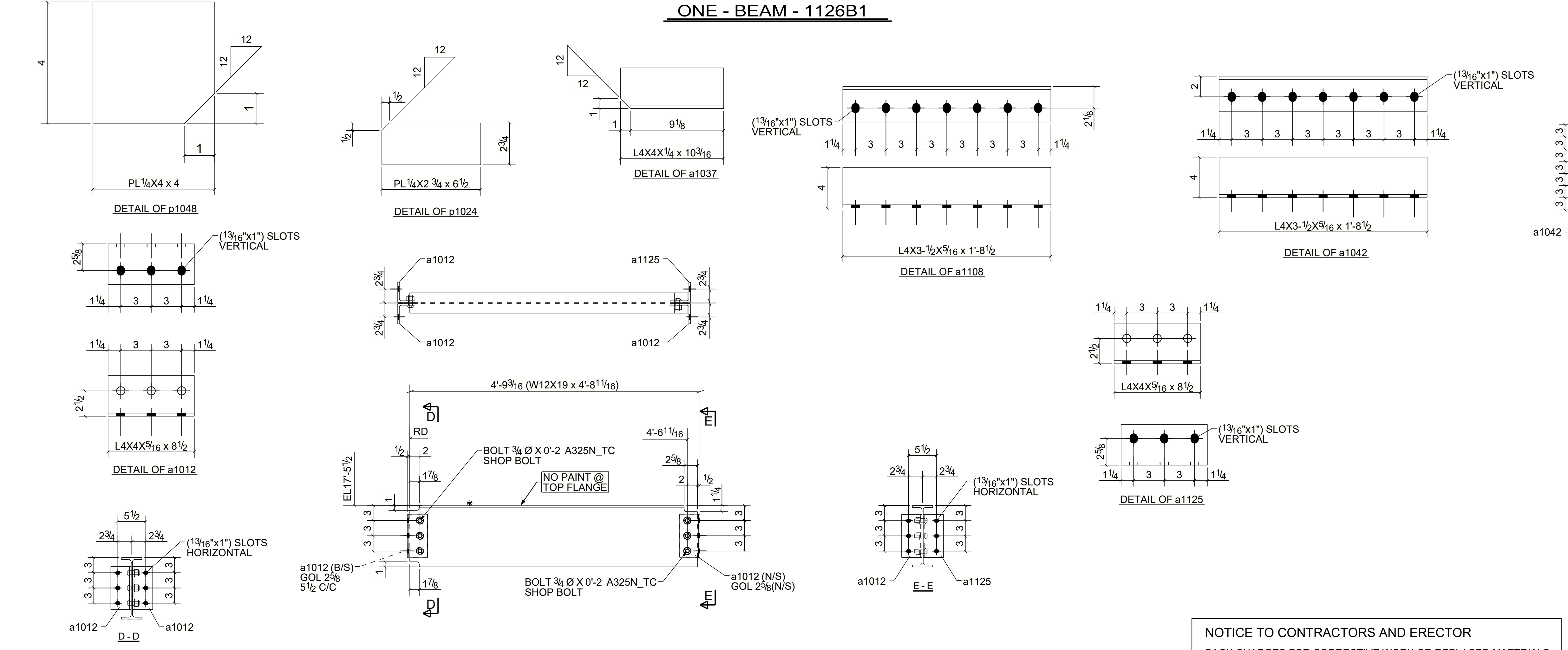


SHIPPING BILL		BILL OF MATERIAL					
QTY	MARK	MARK	QTY	DESCRIPTION	LENGTH	WEIGHT	REMARKS
1	1126B1			BEAMS		2340	B1102
		1126B1	1	W24X55	33'-10 9/16"	1868	A992
		a1037	8	L4X4X1/4	0'-10 3/16"	44	A36
		a1042	2	L4X3-1/2X5/16	1'-8 1/2"	26	A36
		a1047	8	L3X3X1/4	1'-9 3/8"	70	A36
		a1108	2	L4X3-1/2X5/16	1'-8 1/2"	26	A36
		bpl1020	1	PL1/4"X9 1/4"	35'-2 15/16"	274	A36 BENT
		m1107	18	STUD_1/2-DIA	0'-8"	9	
		p1024	1	PL1/4"X2 3/4"	0'-6 1/2"	1	A36
		p1032	8	PL1/4"X2 1/4"	0'-3"	4	A36
		p1048	16	PL1/4"X4"	0'-4"	18	A36
1	1126B2			BEAMS		113	B1068
		1126B2	1	W12X19	4'-8 11/16"	90	A992
		a1012	3	L4X4X5/16	0'-8 1/2"	17	A36
		a1125	1	L4X4X5/16	0'-8 1/2"	6	A36
			6	3/4"Ø A325N_TC BOLT	0'-2"	4	Workshop
TOTAL WEIGHT THIS DRAWING						2456	



Member	TOTAL QTY.	FIELD BOLTS	LENGTH
1126B2	3	3/4"Ø A325N_TC BOLT	0'-2"
1126B1	14	3/4"Ø A325N_TC BOLT	0'-1 3/4"
1126B2	9	3/4"Ø A325N_TC BOLT	0'-1 3/4"
1126B1	8	3/4"Ø A325SC_TC BOLT	0'-2 1/4"
1126B1	8	3/4"Ø A325SC_TC BOLT	0'-2"



**\* NOTE**  
SC BOLTS  
NO PAINT 3" AROUND HOLES

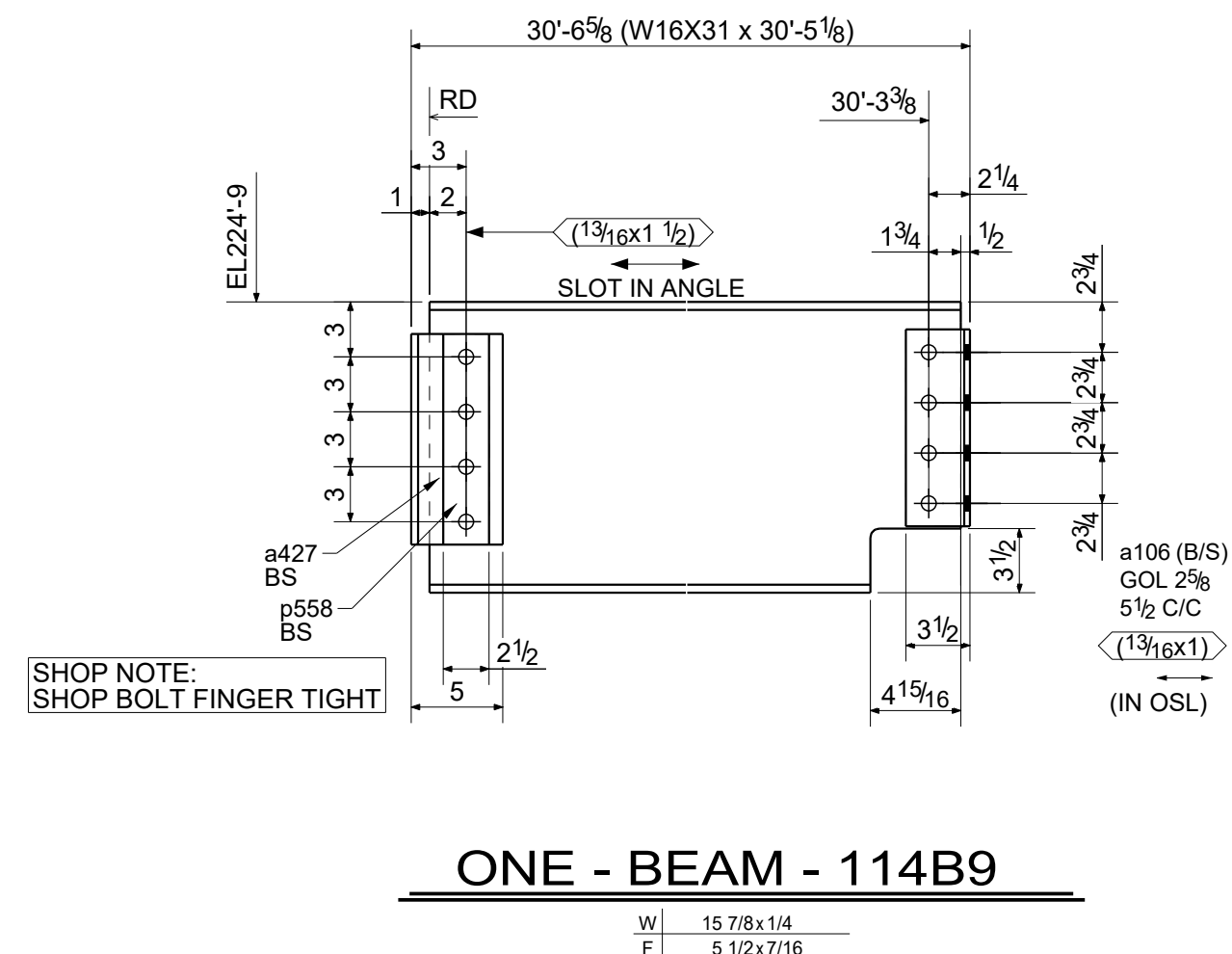
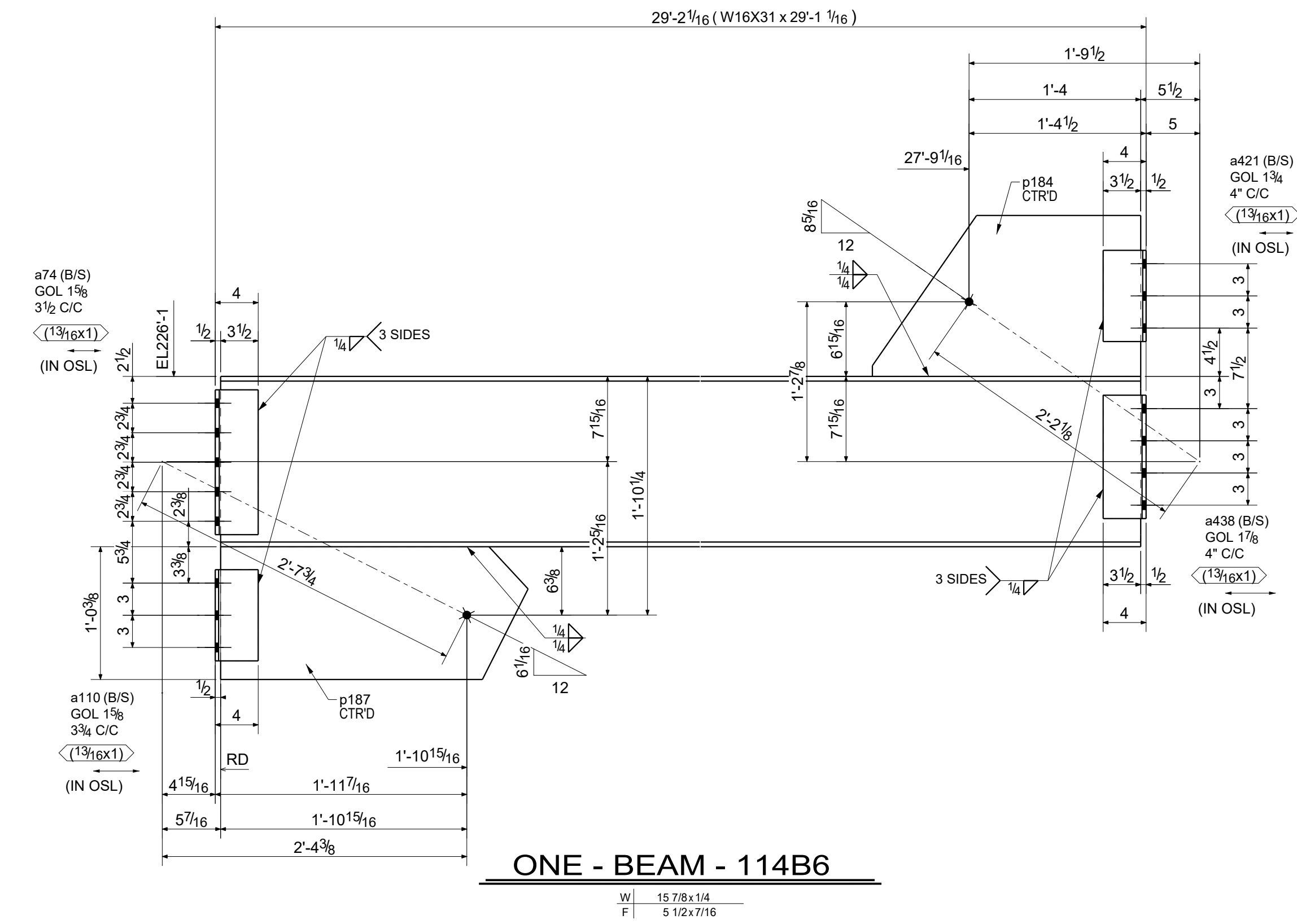
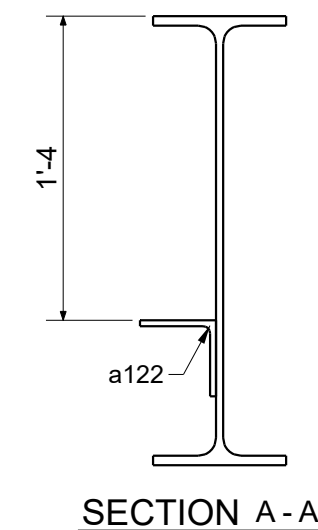
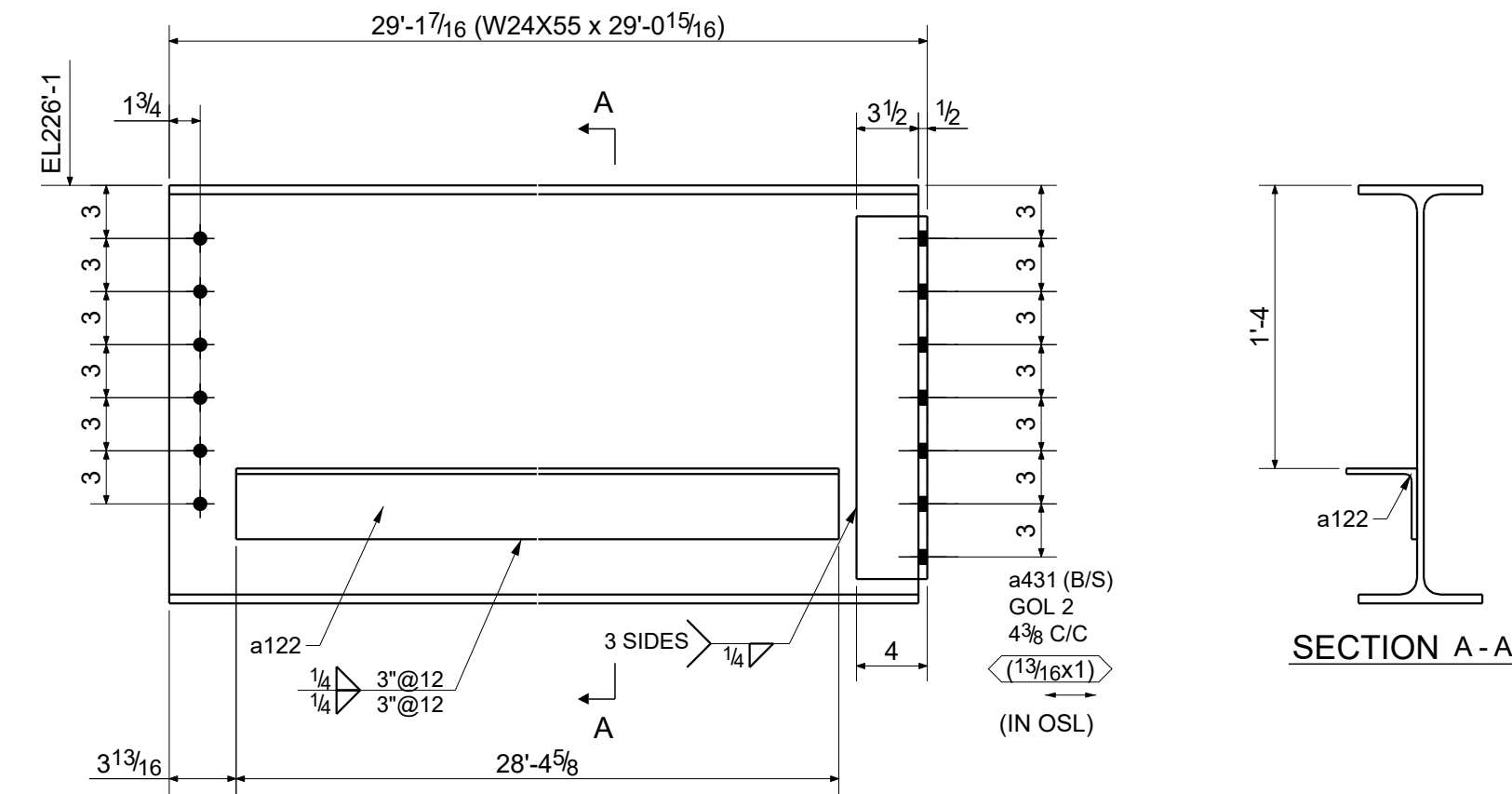
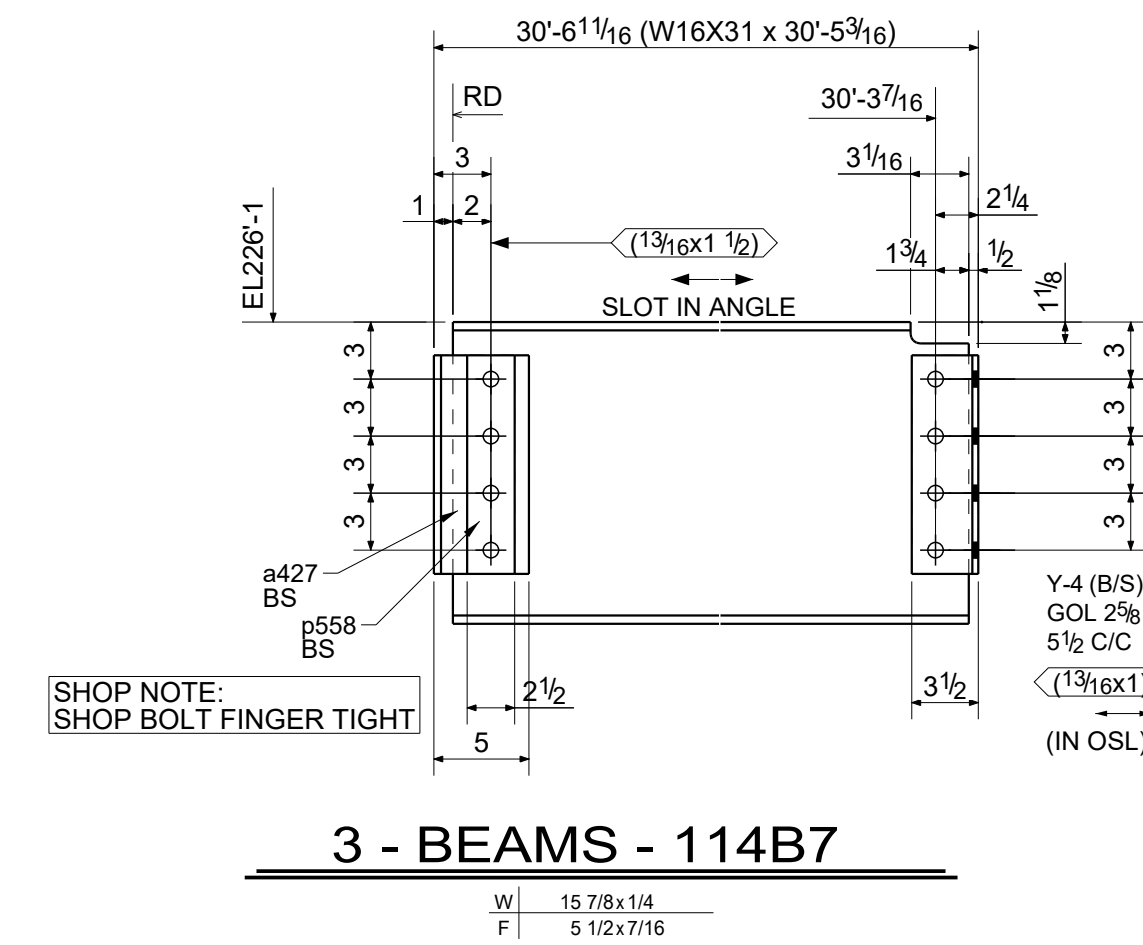
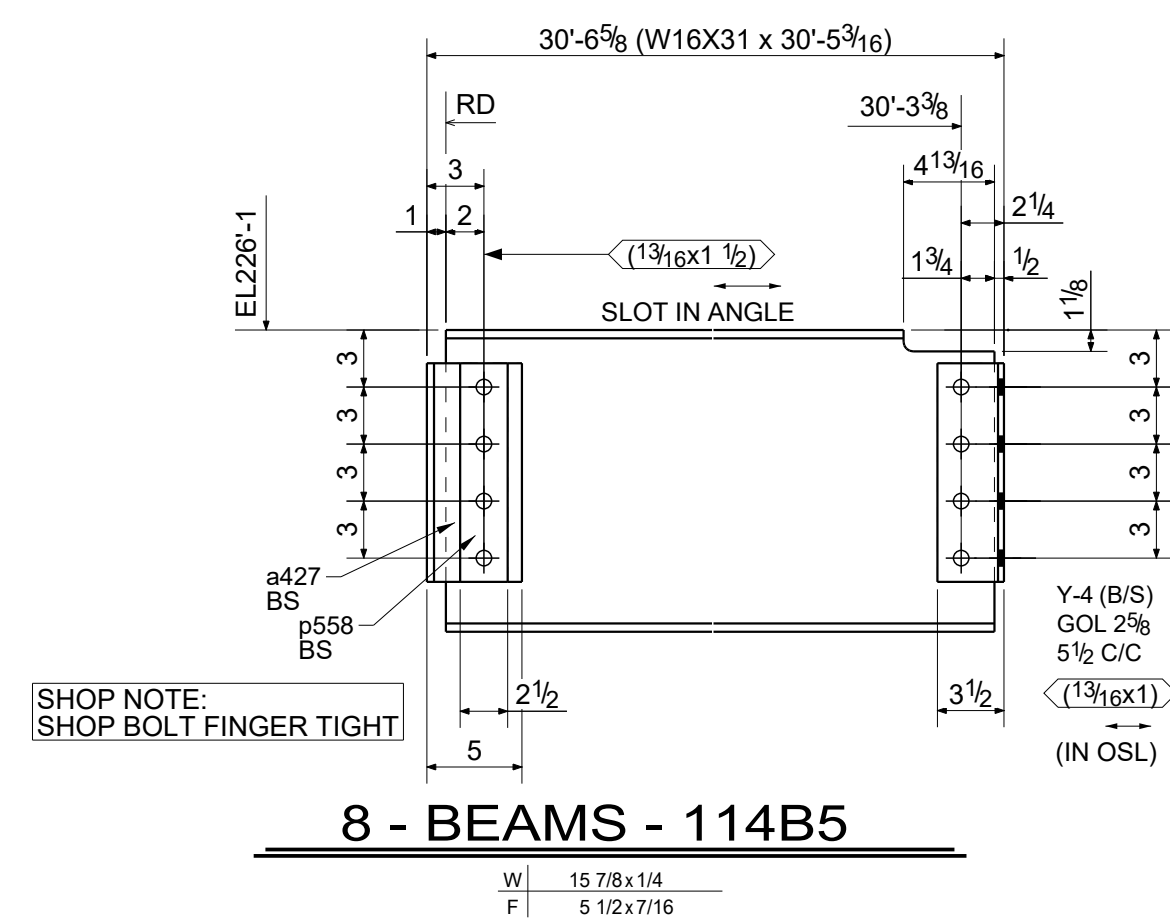
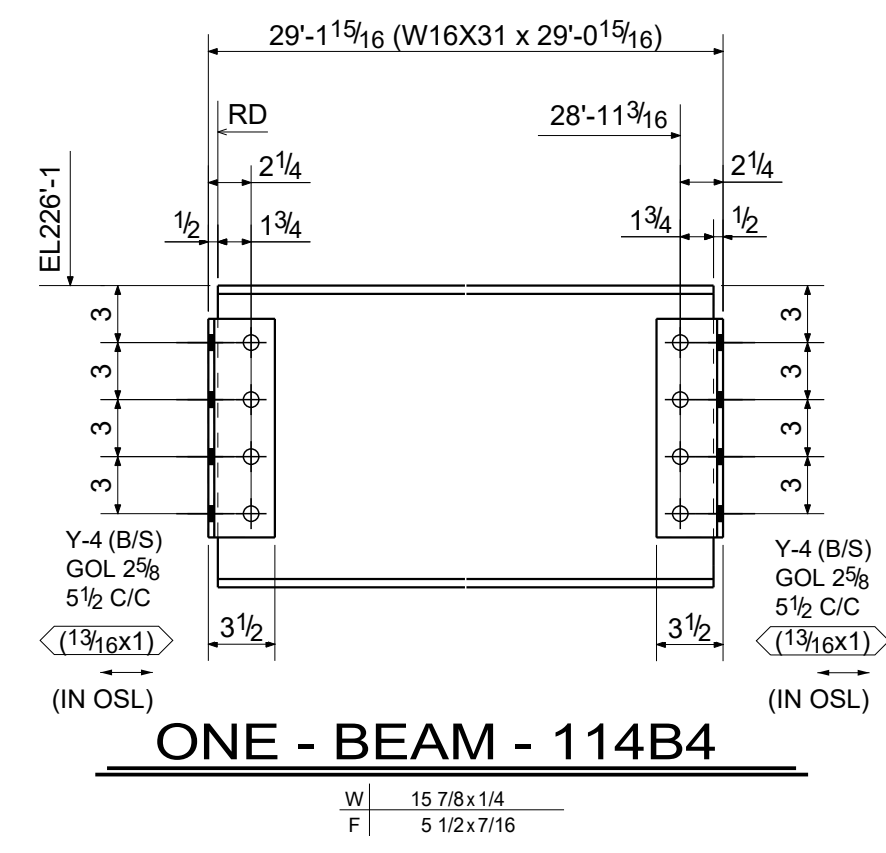
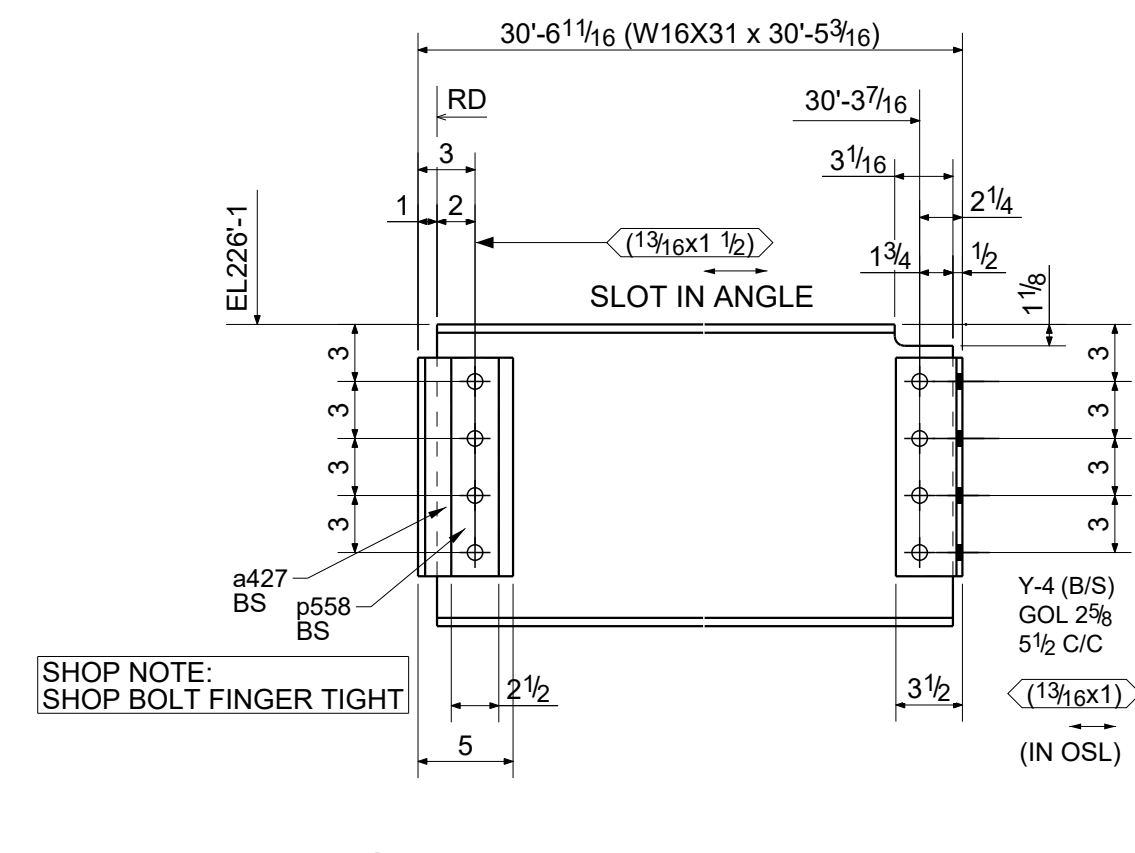
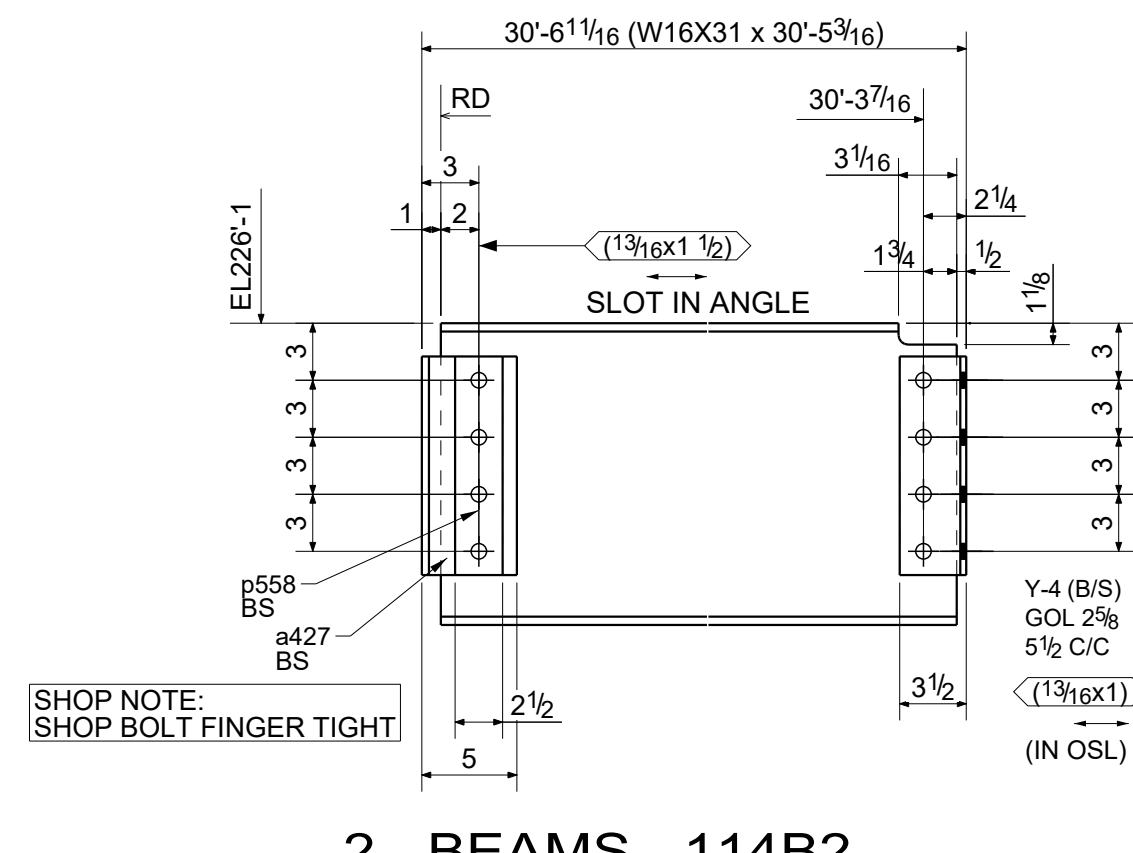
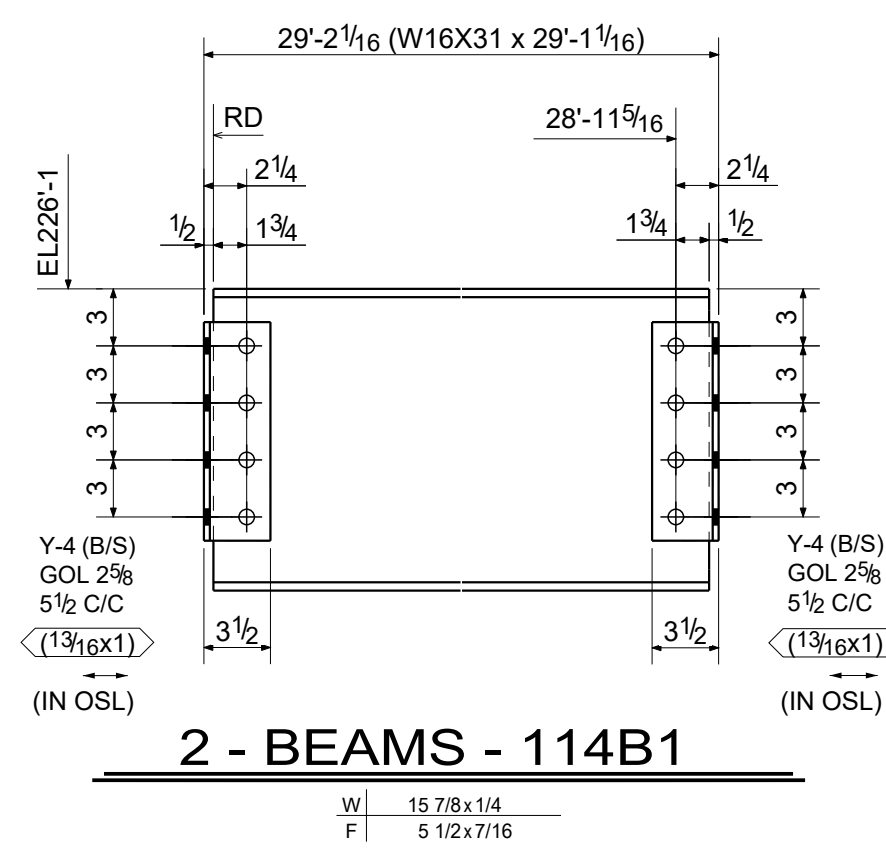
Revised As Marked SC Bolts

SHOP NOTES:  
 1. ALL STEELS ARE A36 U.N.O.  
 2. Ⓢ - DENOTES CONNECTING SIDE MARK.  
 REF.DWG. E1002,E1003,E1004,E1005,E1006  
 PAINT: CENTURY COATING 220-D-344 GRAY PRIMER HOLES: 13/16" UNL. NTD.  
 SURFACE PREP: MIL THICKNESS ELECTRODES: E70XX UNL. NTD.

REVISIONS	
NO.	DATE
1	11/20/2020
2	01/13/2021
3	01/15/2021

**NOTICE TO CONTRACTORS AND ERECTOR**  
 BACK CHARGES FOR CORRECTIVE WORK OR REPLACED MATERIALS WILL NOT BE ACCEPTED UNLESS AUTHORIZED IN WRITING BY POSTEL INTERNATIONAL INC. BEFORE SUCH COSTS ARE INCURRED

ONE - BEAM - 1126B2



BILL OF MATERIAL										
QUANTITY	SHIPPING MARK	No. PCS	MATERIAL	LENGTH FT.	IN	PIECE MARK	GRADE	FINISH	CAMBER	REMARKS
2	114B1	2	W16X31	29'	1 1/16		A992	P		
		8	L4X3-1/2X5/16	0'	11 1/2	Y-4	A36	P		
		16	3/4 DIA A325N BOLT	2						1HD WASH
2	114B2	2	W16X31	30'	5 3/16		A992	P		
		4	L4X3-1/2X5/16	0'	11 1/2	Y-4	A36	P		
		4	L5X3X3/8	0'	11 1/2	a427	A36	P		
		4	PL5/16X2 1/2	0'	11 1/2	p558	A36	P		
		8	3/4 DIA A325N BOLT	2						1HD WASH
		8	3/4 DIA A325N BOLT	2 3/4						1HD WASH
1	114B3	1	W16X31	30'	5 3/16		A992	P		
		2	L4X3-1/2X5/16	0'	11 1/2	Y-4	A36	P		
		2	L5X3X3/8	0'	11 1/2	a427	A36	P		
		2	PL5/16X2 1/2	0'	11 1/2	p558	A36	P		
		4	3/4 DIA A325N BOLT	2						1HD WASH
		4	3/4 DIA A325N BOLT	2 3/4						1HD WASH
1	114B4	1	W16X31	29'	0 15/16		A992	P		
		4	L4X3-1/2X5/16	0'	11 1/2	Y-4	A36	P		
		8	3/4 DIA A325N BOLT	2						1HD WASH
8	114B5	8	W16X31	30'	5 3/16		A992	P		
		16	L4X3-1/2X5/16	0'	11 1/2	Y-4	A36	P		
		16	L5X3X3/8	0'	11 1/2	a427	A36	P		
		16	PL5/16X2 1/2	0'	11 1/2	p558	A36	P		
		32	3/4 DIA A325N BOLT	2						1HD WASH
		32	3/4 DIA A325N BOLT	2 3/4						1HD WASH
1	114B6	1	W16X31	29'	1 1/16		A992	P		
		2	L4X3-1/2X3/8	1'	1 1/2	a74	A36	P		
		2	L4X3-1/2X5/16	0'	8 1/2	a110	A36	P		
		2	L4X3-1/2X5/16	0'	8 1/2	a421	A36	P		
		2	L4X3-1/2X3/8	0'	11 1/2	a438	A36	P		
		1	PL1/2X15	2'	1	p184	A36	P		
		1	PL1/2X12 3/8	2'	4 5/8	p187	A36	P		
3	114B7	3	W16X31	30'	5 3/16		A992	P		
		6	L4X3-1/2X5/16	0'	11 1/2	Y-4	A36	P		
		6	L5X3X3/8	0'	11 1/2	a427	A36	P		
		6	PL5/16X2 1/2	0'	11 1/2	p558	A36	P		
		12	3/4 DIA A325N BOLT	2						1HD WASH
		12	3/4 DIA A325N BOLT	2 3/4						1HD WASH
1	114B8	1	W24X55	29'	0 15/16		A992	P		
		1	L4X4X5/16	28'	4 5/8	a122	A36	P		
		2	L4X3-1/2X1/2	1'	8 1/2	a431	A36	P		
1	114B9	1	W16X31	30'	5 1/8		A992	P		
		2	L4X3-1/2X5/16	0'	10 3/4	a106	A36	P		
		2	L5X3X3/8	0'	11 1/2	a427	A36	P		
		2	PL5/16X2 1/2	0'	11 1/2	p558	A36	P		
		4	3/4 DIA A325N BOLT	2						1HD WASH
		4	3/4 DIA A325N BOLT	2 3/4						1HD WASH

ALL MATERIAL A36 UNLESS NOTED Total Weight:

SHOP NOTE:  
MISLOCATED HOLES MAY BE LEFT OPEN OR PLUG WELDED (MUST BE DONE IN ACCORDANCE WITH AWS D1.1 SECTION 5.26.5)

Seq-1

ALL 13/16" HOLES U.N.O.				PROJECT:				
WELDS: E70XX				LOCATION:				
CLEAN: SSPC-SP6				ARCHITECT:				
PAINT: SHOP PRIMER				CONTRACTOR:				
0	01/08/2020	SP	DRAWN BY	MK	SCALE	NTS	JOB NO.	£
1	11/28/2019	SP	CHKD BY	PBH	DATE	11/26/2019	DRAWING NO.	114
REVISIONS				TRACED				